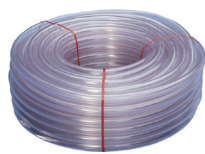


Tubi / Hoses / Tömlők

Tubo in PVC / PVC hose
PVC tömlő



📖	Ø (mm)
R001201	4 / 6
R001202	5 / 8
R001203	6 / 9
...	...
R001241	60 / 70

Tubo in tessuto di PV / PVC fabric-hose
PVC szövet-tömlő



📖	Ø (mm)
R001101	6 / 12
R001102	8 / 14
R001103	9 / 15
...	...
R001116	50 / 64

Torsino in PVC / Torsino PVC hose
Torsino PVC tömlő



📖	Ø
R001301	½ "
R001311	⅝ "
R001304	¾ "
...	...
R001310	2 "

Tubo in silicone / Silicone hose
Szilikon tömlő



📖	Ø (mm)
R001274	4 / 7
R001275	5 / 8
R001276	6 / 10
...	...
R001287	25 / 33

Tubo in PU / PU hose
PU tömlő



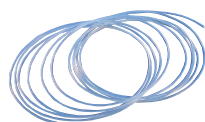
📖	Ø (mm)
R001290	4 / 6
R001291	5 / 8
R001292	6,5 / 10
...	...
R001294	11 / 16

Tubo per ossigeno / Oxygen hose
Oxigénső



📖	Ø (mm)
R002302	6 / 13
R002303	6 / 16
R002304	9 / 16
-	-

Tubo PTFE-PFA / PTFE-PFA hose
PTFE-PFA tömlő



📖	Ø (mm)
F005267	3 / 5
F005268	4 / 6
F005269	5 / 8
...	...
F005276	12 / 14

Tubo a spirale Luisiana / Luisiana spiral hose
Luisiana spiráltömlő



📖	Ø (mm)
R001320	20 / 26,2
R001321	25 / 31,6
R001322	30 / 37,0
...	...
R001343	200 / 218,2

Tubo a spirale Oregon / Oregon spiral hose
Oregon spiráltömlő



📖	Ø (mm)
R001360	20
R001361	25
R001362	30
...	...
R001386	300

Tubo a spirale Arizona SE
Arizona SE spiral hose
Arizona SE spiráltömlő



📖	Ø (mm)
R001421	25 / 33,8
R001422	32 / 40,8
R001423	38 / 46,8
...	...
R001444	200 / 226

Tubo a spirale Shark
Shark spiral hose
Shark spiráltömlő



📖	Ø (mm)
R001461	102 / 122
R001462	127 / 149
R001463	152 / 175
...	...
R001467	355 / 395

Tubo in gomma altamente resistente
Heavy-duty rubber spiral hose
Nagy teherbírású gumi spirálcső



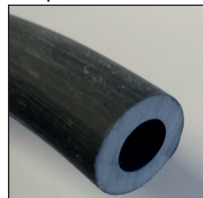
📖	Ø (mm)
R001521	19 / 29
R001522	25 / 35
R001523	32 / 42
...	...
R001541	202 / 227

Tubo a spirale Vacupress Cristal e SE
Vacupress cristal spiral hose & SE
Vacupress kristály spirál tömlő & SE



📖	Ø (mm)
R001561	19 / 28,0
...	...
R001578	151 / 171
R001611	19 / 28,0
...	...
R001630	151 / 171

Tubo autoaffondante Limpet
Limpet self-sink hose
Limpet önelszívó tömlő



📖	Ø (mm)
R001904	4
R001908	8
R001910	10
R001912	12
R001919	19

Tubo piatto
Flat hose
Lapos tömlő



📖	Ø (mm)
R001500	25
R001501	32
R001502	40
...	...
R001508	207

Raccordi PA - POM / PA - POM fittings / PA - POM szerelvények

Binato con sbavatura / Double hose barb
Kettős tömlőszár



📖	Ø (mm)
R030101	3
R030102	4
R030103	5
...	...
R030112	25

Binato rid. sbav. / Double hose barb reduc.
Kettős tömlőszár csökkentett



📖	Ø (mm)
R030201	4 × 3
R030202	6 × 4
R030203	8 × 4
...	...
R030208	12 × 10

Pezzo a T / T-piece
T-darab



📖	Ø (mm)
R030301	3
R030302	4
R030303	5
...	...
R030314	25

Pezzo a T ridotto / T-piece reduced
T-darab csökkentett


	Ø (mm)
R030401	3 × 4 × 3
R030402	4 × 6 × 4
R030403	6 × 4 × 6
...	...
R030416	18 × 15 × 18

Gomito / Elbow
Könyök


	Ø (mm)
R030501	3
R030502	4
R030503	5
...	...
R030513	25

Pezzo a Y / Y-piece
Y-darab


	Ø (mm)
R030601	3
R030602	4
R030603	5
...	...
R030612	19

Pezzo a Y ridotto / Y-piece reduced
Y-darab csökkentett


	Ø (mm)
R030701	4 × 6 × 4
R030702	6 × 8 × 6
-	-

Croce / Cross
T-darab csökkentett


	Ø (mm)
R030801	4
R030802	5
R030803	6
R030804	12
-	-

Sbavatura × Filo ♂ / Hose barb × ♂ thread
Tömlőszár × ♂ menet


	Ø (mm)
R030901	4 × 1/8"
R030902	4 × 1/4"
R030903	5 × 1/4"
...	...
R030943	60 × 2"

Pezzo a T sbavatura × Filo ♂
T-piece Hose barb × ♂ thread
T-darab tömlőszár × ♂ menet


	Ø (mm)
R031001	4 × 1/8"
R031002	6 × 1/8"
R031003	6 × 1/4"
R031004	8 × 1/4"
R031005	10 × 3/8"

Gomito sbavatura × Filo ♂
Elbow Hose barb × ♂ thread
Könyök tömlőszár × ♂ menet


	Ø (mm)
R031101	4 × 1/8"
R031102	4 × 1/4"
R031103	6 × 1/8"
...	...
R031115	25 × 1"

Sbavatura × Filo ♀
Hose barb × ♀ thread
Tömlőszár × ♀ menet


	Ø (mm)
R031201	1/4" × 7
R031202	3/8" × 9
R031203	3/8" × 9
...	...
R0321219	2" × 50

Gomito sbavatura × Filo ♀
Elbow Hose barb × ♀ thread
Könyök tömlőszár × ♀ menet


	Ø (mm)
R031301	1/2" × 12
R031302	3/4" × 12
R031303	3/4" × 12
...	...
R031311	2" × 60

Gomito Filo ♂ × Filo ♂
Elbow ♂ thread × ♂ thread
Könyök ♂ menet × ♂ menet


	Ø
R031401	3/4"
R031402	1"
R031403	1" 1/4
-	-

Gomito sbavatura × Filo ♂
Elbow Hose barb × ♂ thread
Könyök tömlőszár × ♂ menet


	Ø (mm)
R031501	3/8" × 12
R031502	1/2" × 12
R031503	1/2" × 16
...	...
R031511	1" 1/2 × 40

Unione sbavatura
Union Hose barb
Unió tömlőszár


	Ø (mm)
R031601	13
R031602	16
R031603	20
...	...
R031609	60

Unione sbavatura × Filo ♂
Union Hose barb × ♂ thread
Unió tömlőszár × ♂ menet


	Ø (mm)
R031701	3/4" × 16
R031702	3/4" × 20
R031703	1" × 20
...	...
R031718	2" × 60

Tappo filo ♂
Cap ♂ thread
Sapka ♂ menet


	Ø
R031801	1/8"
R031802	1/4"
R031803	3/8"
...	...
R031806	1"

Tappo filo ♀
Cap ♀ thread
Sapka ♀ menet


	Ø
R031901	1/2"
R031902	3/4"
R031903	1"
-	-

Ugello Filo ♂ × Filo ♂
Nipple ♂ thread × ♂ thread
Csőillesztés ♂ menet × ♂ menet


	Ø
R032001	3/8"
R032002	1/2"
R032003	3/4"
...	...
R032007	2"

Ugello ridotto Filo ♂ × Filo ♂
Reduced nipple ♂ thread × ♂ thread
Csőökkentett csőilleszt. ♂ menet × ♂ menet


	Ø (mm)
R032101	1/2" × 3/8"
R032102	3/4" × 1/2"
R032103	1" × 3/4"
...	...
R032107	2" × 1" 1/2

anche disponibili: raccordi Super Speedfit / also available : Super Speedfit fittings / szintén kapható: Super Speedfit szerelvények

Attacchi rapidi per aria compressa / Compressed air quick-couplings
Gyorscsatlakozók sűrített levegőhöz

Base sbavatura / Hose barb base
Bázis tömlőszár



📖	Ø (mm)
R003401	6
R003402	8
R003403	9
R003404	10
R003405	13

Base File ♀ / ♀ thread base
Bázis menet ♀



📖	Ø
R003501	¼"
R003502	⅜"
R003503	½"
-	-

Base File ♂ / ♂ thread base
Bázis menet ♂



📖	Ø
R003601	¼"
R003602	⅜"
R003603	½"
-	-

Capezzolo sbavatura / Hose barb nozzle
Csőillesztés tömlőszár



📖	Ø (mm)
R003901	6
R003902	8
R003903	9
R003904	10
R003905	13

Capezzolo file ♀ / ♀ thread nipple
Csőillesztés menet ♀



📖	Ø
R004101	¼"
R004102	⅜"
R004103	½"
-	-

Capezzolo file ♂ / ♂ thread nipple
Csőillesztés menet ♂



📖	Ø
R004001	¼"
R004002	⅜"
R004003	½"
-	-

Raccordi LOK / LOK fittings / LOK szerelvények

Unione / Union
Unió



📖	Ø (mm)
R032201	2
R032202	3
R032203	4
...	...
R032219	50

Unione ridotta / Reducing union
Csökkentett Unió



📖	Ø (mm)
R032301	3 × 2
R032302	6 × 2
R032303	6 × 3
...	...
R032324	38 × 30

Unione pass. tramezzo / Bulkhead union
Unió a partíció áthaladásához



📖	Ø (mm)
R032401	3
R032402	4
R032403	6
...	...
R032415	38

Unione ridotta per pass. tramezzo
Bulkhead reducing union
Csökk. egyesítés a partíció áthaladásához



📖	Ø (mm)
R032501	6 × ⅛"
-	-

Connettore ♂
♂ connector
Csatlakozó ♂



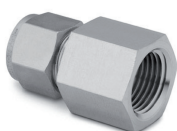
📖	Ø (mm)
R032601	2 × ⅛"
R032602	3 × ⅛"
R032603	3 × ¼"
...	...
R032644	38 × 1" ½

Passaggio di tramezzo ♂
Bulkhead ♂ connector
Partíciós átjáró ♂



📖	Ø (mm)
R032701	6 × ⅛"
R032702	6 × ¼"
R032703	12 × ½"
-	-

Connettore ♀
♀ connector
Csatlakozó ♀



📖	Ø (mm)
R032801	3 × ⅛"
R032802	3 × ¼"
R032803	4 × ⅛"
...	...
R032825	25 × 1"

Passaggio di tramezzo ♀
Bulkhead ♀ connector
Partíciós átjáró ♀



📖	Ø (mm)
R032901	6 × ¼"
R032902	12 × ½"
-	-

Tappo
Cap
Parafa-



📖	Ø (mm)
R033001	2
R033002	3
R033003	4
...	...
R033018	38

Gomito unione / Union elbow
Könyök unió



📖	Ø (mm)
R033101	3
R033102	4
R033103	6
...	...
R033118	50

Gomito ♂ / ♂ elbow
Könyök ♂



📖	Ø (mm)
R033201	3 × ⅛"
R033202	3 × ¼"
R033203	4 × ⅛"
...	...
R033235	38 × 1" ½

Gomito ♀ / ♀ elbow
Könyök ♀



📖	Ø (mm)
R033301	6 × ⅛"
R033302	6 × ¼"
R033303	6 × ½"
...	...
R033309	16 × ½"

Gomito σ 45° / 45° σ elbow
Könyök σ 45°



📖	Ø (imp.)
R033401	1/4" x 1/8"
R033402	1/4" x 1/4"
R033403	3/8" x 1/8"
...	...
R0334	1" x 1"

Pezzo a T unione / Union Tee
T-darab unió



📖	Ø (mm)
R033501	2
R033502	3
R033503	4
...	...
R033519	50

Pezzo a T unione red. / Reducing union Tee
Csökkentett T-darab unió



📖	Ø (mm)
R033601	3 x 6
R033602	8 x 6
R033603	10 x 6
...	...
R033609	25 x 15

Pezzo a T σ ramo / σ branch Tee
T-darab σ ág



📖	Ø (mm)
R033701	6 x 1/8"
R033702	6 x 1/4"
R033703	8 x 1/8"
...	...
R033709	16 x 1/2"

Pezzo a T passaggio σ / σ run Tee
T-darab σ átjáró



📖	Ø (mm)
R033801	6 x 1/8"
R033802	6 x 1/4"
R033803	8 x 1/4"
...	...
R033806	16 x 1/2"

Pezzo a T passaggio \varnothing / \varnothing run Tee
T-darab \varnothing átjáró



📖	Ø (mm)
R033901	6 x 1/8"
R033902	6 x 1/4"
R033903	8 x 1/8"
...	...
R033909	16 x 1/2"

Té \varnothing à ramo / \varnothing branch Tee
T-darab \varnothing ág



📖	Ø (mm)
R034001	6 x 1/8"
R034002	6 x 1/4"
R034003	8 x 1/8"
...	...
R034009	16 x 1/2"

Attraverso unione / Union cross
Kereszt unió



📖	Ø (mm)
R034101	3
R034102	6
R034103	8
...	...
R034110	25

Inserto per tubi / Tubing insert
Csőbetét



📖	Ø (mm)
R034201	6 x 4
R034202	8 x 6
R034203	10 x 8
R034204	12 x 8
R034205	12 x 10

Connettore del tubo
Hose connector
Tömlőcsatlakozó



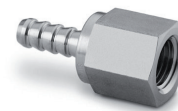
📖	Ø (imp.)
R034301	1/8" x 1/8"
R034302	1/4" x 1/8"
R034303	1/4" x 1/4"
...	...
R034306	1/2" x 1/2"

Connettore del tubo σ
 σ hose connector
Tömlőcsatlakozó σ



📖	Ø (mm)
R034401	4 x 1/8"
R034402	6 x 1/8"
R034403	8 x 1/8"
...	...
R034433	50 x 2"

Connettore del tubo \varnothing
 \varnothing hose connector
Tömlőcsatlakozó \varnothing



📖	Ø (mm)
R034501	6 x 1/8"
R034502	9 x 1/8"
R034503	6 x 1/4"
...	...
R034520	38 x 2"

Connettore del tubo con dado \varnothing
Hose connector, with \varnothing nut
Tömlőcsatlakozó anyával \varnothing



📖	Ø (mm)
R034601	4 x 1/8"
R034602	6 x 1/8"
R034603	4 x 1/4"
...	...
R034615	25 x 1"

Sbavatura, doppia
Hose nozzle, double
Tömlőszár, kettős



📖	Ø (mm)
R034701	6
R034702	9
R034703	13
...	...
R034716	107

Capezzolo σ compatto
Close σ nipple
Mellbimbó σ kompakt



📖	Ø
R034801	1/8"
R034802	1/4"
R034803	3/8"
...	...
R034806	1"

Capezzolo σ esagonale
Hex σ nipple
Mellbimbó σ hatszögletű



📖	Ø
R034901	1/16"
R034902	1/8"
R034903	1/4"
...	...
R034909	2"

Capezzolo σ esagonale, misto
Hex σ nipple, mixed
Mellbimbó σ hatszögletű, vegyes



📖	Ø
R035001	1/8"
R035002	1/4"
R035003	3/8"
...	...
R035006	1"

Capezzolo σ esagonale, ridotto
Hex reducing σ nipple
Mellbimbó σ hatszögletű, csökkent



📖	Ø
R035101	1/8" x 1/16"
R035102	1/4" x 1/8"
R035103	3/8" x 1/8"
...	...
R035112	1" x 3/4"

Adattatore ♀ × ♂
Adapter ♀ × ♂
Adapter ♀ × ♂



📖	Ø (mm)
R035201	1/8"
R035202	1/4"
R035203	3/8"
...	...
R035206	1"

Adattatore ♀ × ♂, misto
Adapter ♀ × ♂, mixed
Adapter ♀ × ♂, vegyes



📖	Ø (mm)
R035301	1/8"
R035302	1/4"
R035303	3/8"
...	...
R035306	1"

Adattatore ♂ × ♀, misto
Adapter ♂ × ♀, mixed
Adapter ♂ × ♀, vegyes



📖	Ø (mm)
R035401	1/4"
R035402	3/8"
R035403	1/2"
-	-

Adattatore ridotto ♀ × ♂
Reducing adapter ♀ × ♂
Adapter csökkent ♀ × ♂



📖	Ø (mm)
R035501	1/8" × 1/16"
R035502	1/4" × 1/8"
R035503	3/8" × 1/8"
...	...
R035513	1" × 3/4"

Manica di riduzione ♂ × ♀
Reducing bushing ♂ × ♀
Csökkentő hüvely ♂ × ♀



📖	Ø (mm)
R035601	1/8" × 1/16"
R035602	1/4" × 1/8"
R035603	3/8" × 1/8"
...	...
R035614	1" × 3/4"

Accoppiamento ♀ esagonale
♀ hex coupling
Csatolás ♀ hatszögletű



📖	Ø (mm)
R035701	1/8"
R035702	1/4"
R035703	3/8"
...	...
R035706	1"

Accoppiamento ♀ esagonale, ridotto
♀ hex reducing coupling
Csatolás ♀ hatszögletű, csökkent



📖	Ø (mm)
R035801	1/4" × 1/8"
R035802	3/8" × 1/4"
R035803	1/2" × 1/8"
...	...
R035809	1" × 3/4"

Gomito ♀ × ♀
♀ × ♀ elbow
Könyök ♀ × ♀



📖	Ø (mm)
R035901	1/8"
R035902	1/4"
R035903	3/8"
...	...
R035906	1"

Gomito ♂ × ♂
♂ × ♂ elbow
Könyök ♂ × ♂



📖	Ø (mm)
R036001	1/8"
R036002	1/4"
R036003	3/8"
...	...
R036006	1"

Gomito ♀ × ♂
♀ × ♂ elbow
Könyök ♀ × ♂



📖	Ø (mm)
R036101	1/8"
R036102	1/4"
R036103	3/8"
...	...
R036106	1"

Gomito ♀ × ♂ ridotto
♀ × ♂ reducing street elbow
Könyök ♀ × ♂ csökkent



📖	Ø (mm)
R036201	1/8"
R036202	1/4"
R036203	3/8"
...	...
R036206	1"

Pezzo a T ♀
♀ Tee
T-darab ♀



📖	Ø (mm)
R036301	1/8"
R036302	1/4"
R036303	3/8"
...	...
R036306	1"

Pezzo a T ♂
♂ Tee
T-darab ♂



📖	Ø (mm)
R036401	1/8"
R036402	1/4"
R036403	3/8"
...	...
R036306	1"

Pezzo a T ramo ♀ × ♀ × ♂
♀ × ♀ × ♂ branch Tee
T-darab ág ♀ × ♀ × ♂



📖	Ø (mm)
R036501	1/8"
R036502	1/4"
R036503	3/8"
R036504	1/2"
-	-

Pezzo a T passaggio ♀ × ♂ × ♀
♀ × ♂ × ♀ street Tee
T-darab átjáró ♀ × ♂ × ♀



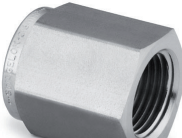
📖	Ø (mm)
R036601	1/8"
R036602	1/4"
R036603	3/8"
R036604	1/2"
R036605	3/4"

Attraverso ♀ / ♀ cross
Kereszt ♀



📖	Ø (mm)
R036701	1/8"
R036702	1/4"
R036703	3/8"
...	...
R036706	1"

Tappo ♀ / ♀ cap
Dugó ♀



📖	Ø (mm)
R036801	1/8"
R036802	1/4"
R036803	3/8"
...	...
R036806	1"

Tappo ♂ / ♂ plug
Dugó ♂



📖	Ø (mm)
R036901	1/8"
R036902	1/4"
R036903	3/8"
...	...
R036906	1"

Connessioni simmetriche / Guillemin symmetric couplings / Guillemin Szimmetrikus kapcsolatok
Sbavatura / Hose barb
Tömlőszár


📖	Ø (mm)
R900501	30
R900502	35
R900503	40
...	...
R900511	110

Accoppiamento ♀ / ♀ coupling
Csatolás ♀


📖	Ø
R900301	1"
R900302	1" ¼
R900303	1" ½
...	...
R900307	4"

♀ con serratura / ♀ with lock
♀ zárral


📖	Ø
R900401	1"
R900402	1" ¼
R900403	1" ½
...	...
R900407	4"

Accoppiamento ♂ / ♂ coupling
Csatolás ♂


📖	Ø
R900101	1"
R900102	1" ¼
R900103	1" ½
...	...
R900107	4"

♂ con serratura / ♂ with lock
♂ zárral

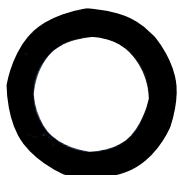

📖	Ø
R900201	1"
R900202	1" ¼
R900203	1" ½
...	...
R900207	4"

Coperchio / Lid
Fedő


📖	DN
R900601	25
R900602	32
R900603	40
...	...
R900607	100

Doppio accoppiamento / Double coupling
Kettős tengelykapcsoló


📖	DN
R900901	40/25
R900902	40/32
R900903	50/32
...	...
R900912	100/80

Foca / Seal
Fóka


📖	DN
R900701	25
R900702	32
R900703	40
...	...
R900707	100

Chiave / Wrench spanner
Villáskulcs

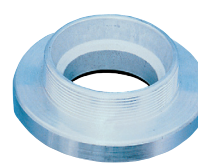

📖	DN
R900801	25 ... 65
R900802	55 ... 110
-	-

Connessioni Storz / Storz couplings / Storz kapcsolatok
Sbavatura / Hose barb
Tömlőszár


📖	Ø (mm)
R002402	C/52 × 25
R002403	C/52 × 32
R002404	C/52 × 38
...	...
R002407	B/75 × 75

Accoppiamento ♀ / ♀ coupling
Csatolás ♀

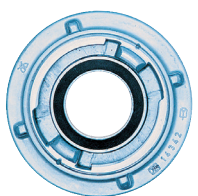

📖	Ø (mm)
R002501	D/25 × 1"
R002502	C/52 × 1"
R002503	C/52 × 1" ¼
...	...
R002507	B/75 × 3"

Accoppiamento ♂ / ♂ coupling
Csatolás ♂


📖	Ø (mm)
R002602	C/52 × 1"
R002603	C/52 × 1" ¼
R002604	C/52 × 1" ½
R002605	C/52 × 2"
-	-

Coperchio / Lid
Fedő


📖	Ø (mm)
R002702	C/52
R002703	B/75
-	-

Riduzione / Reducer
Csökkentés


📖	Ø (mm)
R002801	C × Geka
R002802	C × D
R002803	B × C
R002804	A × B
-	-

Chiave / Wrench spanner
Villáskulcs


📖	Ø (mm)
R002902	A/B/C
-	-

Connessioni Kardan - Perrot / Kardan - Perrot couplings / Kardan - Perrot kapcsolatok
Sbavatura ♂ / Hose barb ♂
Tömlőszár ♂


📖	Ø (mm)
R003001	50
R003003	70
R003004	90
...	...
R003009	150

Sbavatura ♀ / Hose barb ♀
Tömlőszár ♀


📖	Ø (mm)
R003101	50
R003103	70
R003104	90
...	...
R003109	150

Filo ♂ / Thread ♂
Menet ♂


📖	Ø (mm)
R003201	1" ½
R003202	2" -50
R003203	2" -70
...	...
R003210	6"

Filo ♀ / Thread ♀
Menet ♀



📖	Ø (mm)
R003301	1" ½
R003302	2" -50
R003303	2" -70
...	...
R003310	6"

Flangia ♂ / Flange ♂
Karima ♂



📖	DN
R003331	50
R003332	65
R003333	80
...	...
R003336	150

Flangia ♀ / Flange ♀
Karima ♀



📖	DN
R003361	50
R003362	65
R003363	80
...	...
R003366	150

Conessioni Camlock / Camlock couplings / Camlock kapcsolatok

Accoppiamento C / C coupling
Csatolás C



📖	Ø (mm)
R901001	¾" x 19
R901002	1" x 25
R901003	1" ¼ x 32
...	...
R901008	4" x 100

Accoppiamento E / E coupling
Csatolás E



📖	Ø (mm)
R901011	¾" x 19
R901012	1" x 25
R901013	1" ¼ x 32
...	...
R901018	4" x 100

Accoppiamento D / D coupling
Csatolás D



📖	Ø (mm)
R901021	¾"
R901022	1"
R901023	1" ¼
...	...
R901028	4"

Accoppiamento A / A coupling
Csatolás A



📖	Ø (mm)
R901031	¾"
R901032	1"
R901033	1" ¼
...	...
R901038	4"

Accoppiamento B / B coupling
Csatolás B



📖	Ø (mm)
R901041	¾"
R901042	1"
R901043	1" ¼
...	...
R901048	4"

Accoppiamento F / F coupling
Csatolás F



📖	Ø (mm)
R901051	¾"
R901052	1"
R901053	1" ¼
...	...
R901058	4"

Disponibili anche: materiale PP, tappi, guarnizioni, ... / Also available: PP material, caps, O-rings, ... / Rendelhető még: PP anyag, kupakok, tömitések, ...

Compensatori di dilatazione / Compensators / Tágulási kompenzátorok

Accoppiamento ♀ / ♀ coupling
Csatolás ♀



📖	Ø (mm)
R040101	¾"
R040102	1"
R040103	1" ¼
...	...
R040107	3"

Flangia acciaio zincato / Flange galv. steel
Horganyzott acél karima



📖	DN
R040201	32
R040202	40
R040203	50
...	...
R040211	300

Flangia acciaio inos. / Flange stainless. steel
Rozsdamentes acél karima



📖	DN
R040301	32
R040302	40
R040303	50
...	...
R040311	300

Manicotto 0,6 bar / Socket 0,6 bar
Muff 0,6 bar



📖	Ø (mm)
R040401	24/32
R040402	32/40
R040403	42/50
...	...
R040412	150/165

Manicotto 2,5 bar / Socket 2,5 bar
Muff 2,5 bar



📖	Ø (mm)
R040501	55/65
R040502	65/75
R040503	75/89
...	...
R040510	150/175

Riduzione 0,6 bar / Reduction 0,6 bar
Csökkentés 0,6 bar



📖	Ø (mm)
R040601	32/40 x 24/32
R040602	40/50 x 24/32
R040603	40/50 x 32/40
R040604	53/63 x 32/40
...	...

Fascette stringitubo / Clamps / Tömlőbilincsek

Riscaldamento / Worm drive
Házavató



📖	Ø (mm)
R005000	8-16
R005001	10-22
R005002	14-27
...	...
R005014	165-216

Orecchie / Ears
Fülek



📖	Ø (mm)
R041101	1 x 8,1/9,5
...	...
R041001	1 x 7,5/9
...	...
R005103	2 x 7-9
...	...

Perno & Doppio filo / Gudgeon & Wire
Csavar & Dupla vezeték



📖	Ø (mm)
R041201	26/28
...	...
R041230	240/252
R041301	22/25
...	...
R041334	437/450

Tubazione dell'ossigeno Jupiter / Jupiter oxygen piping / Jupiter oxigéncsövek

 Tubo / Pipe
 Cső


	Ø (mm)
R041601	16
R041602	20
R041603	25
...	...
R041610	110

 Manicotto / Socket
 Muff


	Ø (mm)
R041701	16
R041702	20
R041703	25
...	...
R041710	110

 Riduzione corta / Reduction, short
 Csökkentés rövid


	Ø (mm)
R041851	20 × 16
R041802	25 × 20
R041803	32 × 16
...	...
R041868	110 × 90

 Riduzione lunga / Reduction, long
 Csökkentés hosszú


	Ø (mm)
R041801	16 × 20/25
R041802	20 × 25/32
R041803	25 × 32/40
...	...
R041808	75 × 90/110

 Gomito 90° / Elbow 90°
 Könyök 90°


	Ø (mm)
R042401	16
R042402	20
R042403	25
...	...
R042410	110

 Gomito 45° / Elbow 45°
 Könyök 45°


	Ø (mm)
R042451	16
R042402	20
R042403	25
...	...
R042460	110

 Pezzo a T / Tee
 T-darab

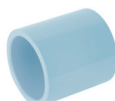

	Ø (mm)
R042101	16
R042102	20
R042103	25
...	...
R042110	110

 Pezzo a T ridotto / Reduced tee
 T-darab csökkent


	Ø (mm)
R042201	20 × 16
R042222	25 × 16
R042203	25 × 20
...	...
R042215	63 × 50

 Unione / Union
 Unió


	Ø (mm)
R042801	16
R042802	20
R042803	25
...	...
R042807	63

 Manicotto × ♀ / Socket × ♀
 Muff × ♀


	Ø (mm)
R041951	20 × ½"
R041952	25 × ¾"
R041953	32 × 1"
-	-

 Manicotto × ♀ / Socket × ♀
 Muff × ♀


	Ø (mm)
R041901	16/12 × ½"
R041902	20/16 × ½"
R041903	25/20 × ¾"
...	...
R041907	63/50 × 2"

 Tappo / Cap
 Dugó


	Ø (mm)
R042901	16
R042902	20
R042903	25
...	...
R042907	63

colla e clip Cobra pagina 147 / Solvent cement & Cobra clips page 147 / ragasztó és Cobra klipsz 147. oldal

Tubi in PEAD e raccordi a compressione / HDPE pipe & Compression fittings / HDPE csövek és kompressziós szerelvények

 Tubo / Pipe
 Cső


	Ø (mm)
R005398	16
R005399	20
R005400	25
...	...
R005426	1000

 Manicotto / Socket
 Muff


	Ø (mm)
R043201	16
R043202	20
R043203	25
...	...
R043210	110

 Manicotto ridotto / Reduced socket
 Muff csökkent


	Ø (mm)
R043301	20 × 16
R043302	25 × 16
R043303	25 × 20
...	...
R043320	110 × 90

 Adattatore ♂ / ♂ adapter
 Adapter ♂


	Ø (mm)
R043401	16 × ¾"
R043402	16 × ½"
R043403	16 × ¾"
...	...
R043435	110 × 4"

 Adattatore ♀ / ♀ adapter
 Adapter ♀


	Ø (mm)
R043501	16 × ¾"
R043502	16 × ½"
R043503	16 × ¾"
...	...
R043531	110 × 4"

 Gomito 45° / Elbow 45°
 Könyök 45°


	Ø (mm)
R043601	40
R043602	50
R043603	63
R043604	90
R043605	110

Gomito 90° / Elbow 90° / Könyök 90°



📖	Ø (mm)
R043701	16
R043702	20
R043703	25
...	...
R043710	110

Gomito 90° ♀ / ♀ elbow 90° / Könyök 90° ♀



📖	Ø (mm)
R043801	16 × 3/8"
R043802	16 × 1/2"
R043803	20 × 1/2"
...	...
R043825	110 × 4"

Gomito 90° ♂ / ♂ elbow 90° / Könyök 90° ♂



📖	Ø (mm)
R043901	16 × 3/8"
R043902	16 × 1/2"
R043903	20 × 1/2"
...	...
R043924	110 × 4"

Pezzo a T / Tee / T-darab



📖	Ø (mm)
R044001	16
R044002	20
R044003	25
...	...
R044010	110

Pezzo a T ♀ / ♀ Tee / T-darab ♀



📖	Ø (mm)
R044101	16 × 3/8"
R044102	16 × 1/2"
R044103	16 × 3/4"
...	...
R044133	110 × 4"

Pezzo a T ♂ / ♂ Tee / T-darab ♂



📖	Ø (mm)
R044201	16 × 3/8"
R044202	16 × 1/2"
R044203	16 × 3/4"
...	...
R044227	90 × 4"

Tappo / Cap
Dugó



📖	Ø (mm)
R044301	16
R044302	20
R044303	25
...	...
R044310	110

Collare di sostegno / Bolt saddle
Támgalér



📖	Ø (mm)
R044401	20 × 1/2"
R044402	25 × 1/2"
R044403	25 × 3/4"
...	...
R044490	315 × 4"

Foca / Seal
Fóka



📖	Ø (mm)
R044501	16
R044502	20
R044503	25
...	...
R044510	110

Raccordi in PE per elettro fusione / Electrofusion PE fittings / Elektrofúziós PE szerelvények

☞ p. 146

Manicotto / Coupler
Muff



📖	Ø (mm)
R046101	16
R046102	20
R046103	25
...	...
R046126	710

Manicotto ridotto / Reduced coupler
Muff csökkent



📖	Ø (mm)
R046201	20 × 16
R046202	25 × 20
R046203	32 × 20
...	...
R046224	180 × 25

Capuzzolo ridotto / Reduced spigot
Mellbimbó csökkent



📖	Ø (mm)
R046301	32 × 25
R046302	40 × 32
R046303	50 × 40
...	...
R046330	200 × 180

Tappo monolitico / Monolithic cap
Dugó monolitikus



📖	Ø (mm)
R046401	32
R046402	40
R046403	50
R046404	63
-	-

Tappo / End cap
Dugó



📖	Ø (mm)
R046501	20
R046502	25
R046503	32
...	...
R046518	315

Tappo con punta / Spigot end plug
Dugó hegyével



📖	Ø (mm)
R046601	20
R046602	25
R046603	32
...	...
R046618	315

Pezzo a T / Tee
T-darab



📖	Ø (mm)
R046701	20
R046702	25
R046703	32
...	...
R046715	250

Pezzo a T ridotto / Reduced Tee
T-darab csökkent



📖	Ø (mm)
R046801	25 × 20
R046802	25 × 32
R046803	32 × 20
...	...
R046835	250 × 110

Pezzo a T con flangia / Flanged tee
T-darab karimával



📖	Ø (mm × DN)
R046901	90 × 80
R046902	110 × 80
R046903	110 × 100
...	...
R046915	250 × 100

Gomito 90° / Elbow 90° / Könyök 90°



📖	Ø (mm)
R047001	20
R047002	25
R047003	32
...	...
R047016	250

Gomito 45° / Elbow 45° / Könyök 45°



📖	Ø (mm)
R047101	32
R047102	40
R047103	50
...	...
R047114	250

Gomito 22° / Elbow 22° / Könyök 22°



📖	Ø (mm)
R047201	90
R047202	110
R047203	125
R047204	160
R047205	180

Gomito 360°
Elbow 360°
Könyök 360°



	Ø (mm)
R047301	25
R047302	32
R047303	40
-	-

Riduzione Y
Y reductor
Csökkentés Y



	Ø (mm)
R047401	32 × 25
R047402	40 × 32
R047403	50 × 40
-	-

Gomito a piede d'anatra 90° (con uscita)
Duckfoot elbow 90° (with outlet)
Kacsaláb könyök 90° (kimenettel)



	Ø (mm)
R047501	90
R047502	90 × 32
-	-

Gomito, regolabile
Adjustable elbow
Könyő, állítható



	Ø (mm)
R047601	110
R047602	125
R047603	160
R047604	180
-	-

Gomito, regolabile, con punta
Adjustable elbow, one sided
Könyő, állítható, hegyével



	Ø (mm)
R047701	110
R047702	125
R047703	160
R047704	180
-	-

Sella di transizione
Transition saddle
Átmeneti nyereg



	Ø (mm)
R047801	63 × 1" ¼
R047802	75 × 1" ¼
R047803	90 × 1" ½
...	...
R047817	250 × 2"

Sella da riparare / Repair saddle
Nyereg javítása



	Ø (mm)
R047901	63
R047902	75
R047903	90
...	...
R047908	180

Sella di derivazione / Branch saddle
Származási nyereg



	Ø (mm)
R048001	63 × 32
R048002	63 × 40
R048003	63 × 50
...	...
R048046	315 × 90

Sella da collezione / Tapping saddle
Gyűjtemény nyereg



	Ø (mm)
R048101	40 × 20
R048102	40 × 32
R048103	50 × 20
...	...
R048161	250 × 63

Tappo per sella da collezione
Welding cap for tapping saddle
Sapkát gyűjtemény nyereg



	Ø (mm)
R048201	57
R048202	50
R048203	40
-	-

Valvola a sfera
Ball valve
Golyós szelep



	Ø (mm)
R048301	25
R048302	32
R048303	40
...	...
R048309	125

Valvola da collezione
Tapping valve
Gyűjtemény szelep



	Ø (mm)
R048401	63 × 32
R048402	63 × 40
R048403	63 × 50
...	...
R048444	250 × 63

Manicotto di transizione ♂
♂ transition coupler
Muff az átmenetről ♂



	Ø (mm)
R048501	20 × ½"
R048502	25 × ¾"
R048503	32 × 1"
...	...
R048509	63 × 2"

Gomito 90° di transizione ♂
♂ transition elbow 90°
Könyök 90° az átmenetről ♂



	Ø (mm)
R048601	20 × ½"
R048602	25 × ¾"
R048603	32 × 1"
...	...
R048609	63 × 2"

Gomito 45° di transizione ♂
♂ transition elbow 45°
Könyök 45° az átmenetről ♂



	Ø (mm)
R048701	32 × 1"
R048702	40 × 1"
R048703	32 × 1" ¼
...	...
R048707	63 × 2"

Manicotto di transizione, flangia in ghisa
Cast iron flange transition coupler
Muff az átmenetről öntöttvas karimával



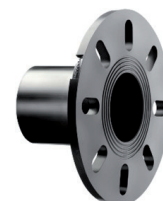
	Ø (mm × DN)
R048801	63 × 50
R048802	90 × 80
R048803	110 × 100
...	...
R048807	225 × 200

Mamelon di transizione, punta in ghisa
Cast iron spigot transition coupler
Mellbimbó az átmenetről, öntöttvas hegy



	Ø (mm × DN)
R048901	90 × 80
R048902	110 × 100
R048903	125 × 100
...	...
R048906	225 × 200

Flangia fissa
Full face flange
Fix karima



	Ø (mm)
R049001	90
-	-

Collare flangiato / Flange adaptor
Karimás gallér



	Ø (mm)
R049101	20
R049102	25
R049103	32
...	...
R049120	400

Flangia / Flange backing ring
Karima



	Ø (mm)
R049201	20 × ½"
R049202	25 × ¾"
R049203	32 × 1"
...	...
R049223	355 × 14"

Foca / Seal
Fóka

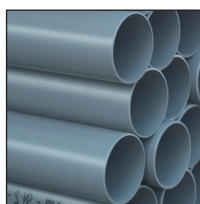


	Ø (mm)
R049301	20
R049302	25
R049303	32
...	...
R049316	400

macchine e accessori pagina 146 / machines & accessories page 146 / gépek és tartozékok 146. oldal

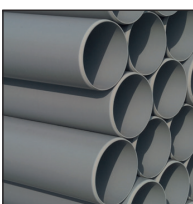
Tubo di drenaggio in PVC / Drainage PVC pipe / PVC vízvezető cső

SN2 (SDR 51) NF-E



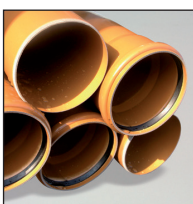
	Ø (mm)
R005461	32
R005462	40
R005463	50
...	...
R005475	315

SN4 (SDR 41)



	Ø (mm)
R005481	110
R005482	125
R005483	160
...	...
R005410	800

KGEM



	Ø (mm)
R005501	110
R005502	125
R005503	160
...	...
R005508	500

Raccordi di drenaggio in PVC / Drainage PVC fittings / PVC vízvezető szerelvények

Gomito 20° ♂ × ♀ / Elbow 20° ♂ × ♀
Könyök 20° ♂ × ♀



	Ø (mm)
R050101	32
R050102	40
R050103	50
...	...
R050112	160

Gomito 20° ♀ × ♀ / Elbow 20° ♀ × ♀
Könyök 20° ♀ × ♀



	Ø (mm)
R050201	32
R050202	40
R050203	50
...	...
R050212	160

Gomito 30° ♂ × ♀ / Elbow 30° ♂ × ♀
Könyök 30° ♂ × ♀



	Ø (mm)
R050301	32
R050302	40
R050303	50
...	...
R050312	160

Gomito 30° ♀ × ♀ / Elbow 30° ♀ × ♀
Könyök 30° ♀ × ♀



	Ø (mm)
R050401	32
R050402	40
R050403	50
...	...
R050412	160

Gomito 45° ♂ × ♀ / Elbow 45° ♂ × ♀
Könyök 45° ♂ × ♀



	Ø (mm)
R050501	32
R050502	40
R050503	50
...	...
R050515	315

Gomito 45° ♀ × ♀ / Elbow 45° ♀ × ♀
Könyök 45° ♀ × ♀



	Ø (mm)
R050601	32
R050602	40
R050603	50
...	...
R050615	315

Gomito 45° con sigillo / Elbow 45° with seal
Könyök 45° pecséttel



	Ø (mm)
R050704	63
R050705	75
R050706	80
...	...
R050715	315

Gomito 67° ♂ × ♀ / Elbow 67° ♂ × ♀
Könyök 67° ♂ × ♀



	Ø (mm)
R050801	32
R050802	40
R050803	50
...	...
R050813	200

Gomito 67° ♀ × ♀ / Elbow 67° ♀ × ♀
Könyök 67° ♀ × ♀



	Ø (mm)
R050901	32
R050902	40
R050903	50
...	...
R050913	200

Gomito 67° con sigillo / Elbow 67° with seal
Könyök 67° pecséttel



	Ø (mm)
R051004	63
R051005	75
R051006	80
...	...
R051013	200

Gomito 87° ♂ × ♀ / Elbow 87° ♂ × ♀
Könyök 87° ♂ × ♀



	Ø (mm)
R051101	32
R051102	40
R051103	50
...	...
R051115	315

Gomito 87° ♂ × ♀ / Elbow 87° ♂ × ♀
Könyök 87° ♂ × ♀



	Ø (mm)
R051201	32
R051202	40
R051203	50
...	...
R051210	125

Gomito 87° ♀ × ♀ / Elbow 87° ♀ × ♀
Könyök 87° ♀ × ♀



📖	Ø (mm)
R051301	32
R051302	40
R051303	50
...	...
R051315	315

Gomito 87° ♀ × ♀ / Elbow 87° ♀ × ♀
Könyök 87° ♀ × ♀



📖	Ø (mm)
R051401	32
R051402	40
R051403	50
...	...
R051413	200

Gomito 87° con sigillo / Elbow 87° with seal
Könyök 87° pecséttel



📖	Ø (mm)
R051504	63
R051505	75
R051506	80
...	...
R051515	315

Settore 15°
Section 15°
Ágazat 15°



📖	Ø (mm)
R051608	100
R051609	110
R051610	125
...	...
R051615	315

Settore 30°
Section 30°
Ágazat 30°



📖	Ø (mm)
R051708	100
R051709	110
R051710	125
...	...
R051715	315

Gomito doppio 87° parallelo ♂ × ♀
Double elbow 87° parallel ♂ × ♀
Dupla könyök 87° párhuzamos ♂ × ♀



📖	Ø (mm)
R051801	32
R051802	40
R051803	50
...	...
R051813	200

Gomito doppio 87° perpendicolare ♂ × ♀
Double elbow 87° square ♂ × ♀
Dupla könyök 87° derékszög ♂ × ♀



📖	Ø (mm)
R051901	32
R051902	40
R051903	50
...	...
R051913	200

Gomito doppio 87° parallelo ♀ × ♀
Double elbow 87° parallel ♀ × ♀
Dupla könyök 87° párhuzamos ♀ × ♀



📖	Ø (mm)
R052001	32
R052002	40
R052003	50
...	...
R052113	200

Gomito doppio 87° perpendicolare ♀ × ♀
Double elbow 87° square ♀ × ♀
Dupla könyök 87° derékszög ♀ × ♀



📖	Ø (mm)
R052101	32
R052102	40
R052103	50
...	...
R052113	200

Pezzo a T piede di porco 87° ♂ × ♀
Tee claw 87° ♂ × ♀
T-darab feszítővas 87° ♂ × ♀



📖	Ø (mm)
R052201	32
R052202	40
R052203	40/32
...	...
R052206	50/32

Pezzo a T piede di porco 87° ♀ × ♀
Tee claw 87° ♀ × ♀
T-darab feszítővas 87° ♀ × ♀



📖	Ø (mm)
R052301	32
R052302	40
R052303	40/32
...	...
R052306	50/32

Attraverso piede di porco 87° ♂ × ♀
Cross claw 87° ♂ × ♀
Kereszt feszítővas 87° ♂ × ♀



📖	Ø (mm)
R052401	32
R052402	40
R052403	40/32
R052404	50
R052405	50/40

Attraverso piede di porco 87° ♀ × ♀
Cross claw 87° ♀ × ♀
Kereszt feszítővas 87° ♀ × ♀



📖	Ø (mm)
R052501	32
R052502	40
R052503	40/32
R052504	50
R052505	50/40

Pezzo a T 45° ♂ × ♀
Tee 45° ♂ × ♀
T-darab 45° ♂ × ♀



📖	Ø (mm)
R052601	32
R052602	40
R052603	40/32
...	...
R052672	315

Doppia T 45° parallelo ♂ × ♀
Double Tee 45° parallel ♂ × ♀
Dupla T-darab 45° párhuzamos ♂ × ♀



📖	Ø (mm)
R052701	32
R052702	40
R052703	40/32
...	...
R052754	125/40

Doppia T 45° perpendicolare ♂ × ♀
Double Tee 45° square ♂ × ♀
Dupla T-darab 45° derékszög ♂ × ♀



📖	Ø (mm)
R052801	32
R052802	40
R052803	40/32
...	...
R052854	125/40

Pezzo a T 45° ♀ × ♀
Tee 45° ♀ × ♀
T-darab 45° ♀ × ♀



📖	Ø (mm)
R052901	32
R052902	40
R052903	40/32
...	...
R052972	315

Doppia T 45° parallelo ♀ × ♀
Double Tee 45° parallel ♀ × ♀
Dupla T-darab 45° párhuzamos ♀ × ♀




📖	Ø (mm)
R053001	32
R053002	40
R053003	40/32
...	...
R053046	125

Doppia T 45° perpendicolare ♀ × ♀
Double Tee 45° square ♀ × ♀
Dupla T-darab 45° derékszög ♀ × ♀




	Ø (mm)
R053101	32
R053102	40
R053104	50
...	...
R053146	125

Pezzo a T 67° ♂ × ♀
Tee 67° ♂ × ♀
T-darab 67° ♂ × ♀




	Ø (mm)
R053201	32
R053202	40
R053203	40/32
...	...
R053262	200/100

Doppia T 67° parallelo ♂ × ♀
Double Tee 67° parallel ♂ × ♀
Dupla T-darab 67° párhuzamos ♂ × ♀




	Ø (mm)
R053301	32
R053302	40
R053303	40/32
...	...
R053348	125/40

Doppia T 67° perpendicolare ♂ × ♀
Double Tee 67° square ♂ × ♀
Dupla T-darab 67° derékszög ♂ × ♀



	Ø (mm)
R053401	32
R053402	40
R053404	50
...	...
R053447	125/50

Pezzo a T 67° ♀ × ♀
Tee 67° ♀ × ♀
T-darab 67° ♀ × ♀



	Ø (mm)
R053501	32
R053502	40
R053503	40/32
...	...
R053557	200

Doppia T 67° parallelo ♀ × ♀
Double Tee 67° parallel ♀ × ♀
Dupla T-darab 67° párhuzamos ♀ × ♀



	Ø (mm)
R053601	32
R053602	40
R053603	40/32
...	...
R053642	125

Doppia T 67° perpendicolare ♀ × ♀
Double Tee 67° square ♀ × ♀
Dupla T-darab 67° derékszög ♀ × ♀



	Ø (mm)
R053701	32
R053702	40
R053704	50
...	...
R053742	125

Pezzo a T 87° ♂ × ♀
Tee 87° ♂ × ♀
T-darab 87° ♂ × ♀



	Ø (mm)
R053801	32
R053802	40
R053803	40/32
...	...
R053872	315

Doppia T 87° parallelo ♂ × ♀
Double Tee 87° parallel ♂ × ♀
Dupla T-darab 87° párhuzamos ♂ × ♀



	Ø (mm)
R053901	32
R053902	40
R053903	40/32
...	...
R053955	125/32

Doppia T 87° perpendicolare ♂ × ♀
Double Tee 87° square ♂ × ♀
Dupla T-darab 87° derékszög ♂ × ♀



	Ø (mm)
R054001	32
R054002	40
R054003	40/32
...	...
R054054	125/40

Pezzo a T 87° ♀ × ♀
Tee 87° ♀ × ♀
T-darab 87° ♀ × ♀




	Ø (mm)
R054101	32
R054102	40
R054103	40/32
...	...
R054172	315

Doppia T 87° parallelo ♀ × ♀
Double Tee 87° parallel ♀ × ♀
Dupla T-darab 87° párhuzamos ♀ × ♀



	Ø (mm)
R054201	32
R054202	40
R054203	40/32
...	...
R054246	125

Doppia T 87° perpendicolare ♀ × ♀
Double Tee 87° square ♀ × ♀
Dupla T-darab 87° derékszög ♀ × ♀



	Ø (mm)
R054301	32
R054302	40
R054303	40/32
...	...
R054346	125

Pezzo a T 45° con sigillo
Tee 45° with seal
T-darab 45° pecséttel



	Ø (mm)
R054401	63
R054402	63/40
R054403	75
...	...
R054415	250

Doppia T 45° parallelo con sigillo
Double Tee 45° parallel with seal
Dupla T-darab 45° párhuzamos pecséttel



	Ø (mm)
R054501	63
R054503	75
R054504	80
...	...
R054514	200

Doppia T 45° perpendicolare con sigillo
Double Tee 45° square with seal
Dupla T-darab 45° derékszög pecséttel



	Ø (mm)
R054601	63
R054603	75
R054604	80
...	...
R054614	200

Pezzo a T 67° con sigillo
Tee 67° with seal
T-darab 67° pecséttel



	Ø (mm)
R054701	63
R054702	75
R054703	75/40
...	...
R054714	200

Doppia T 67° parallelo con sigillo
Double Tee 67° parallel with seal
Dupla T-darab 67° párhuzamos pecséttel



	Ø (mm)
R054801	63
R054802	75
R054804	80
...	...
R054814	200

Doppia T 67° perpendicolare con sigillo
 Double Tee 67° square with seal
 Dupla T-darab 67° derékszög pecséttel



	Ø (mm)
R054901	63
R054902	75
R054904	80
...	...
R054914	200

Pezzo a T 87° con sigillo
 Tee 87° with seal
 T-darab 87° pecséttel



	Ø (mm)
R055001	63
R055002	75
R055003	80
...	...
R055015	250

Doppia T 87° parallelo con sigillo
 Double Tee 87° parallel with seal
 Dupla T-darab 87° párhuzamos pecséttel



	Ø (mm)
R055101	63
R055102	75
R055103	80
...	...
R055114	200

Doppia T 87° perpendicolare con sigillo
 Double Tee 87° square with seal
 Dupla T-darab 87° derékszög pecséttel



	Ø (mm)
R055201	63
R055202	75
R055203	80
...	...
R055214	200

Manicotto di espansione V
 Dilatation socket V
 Bővítő hüvely V



	Ø (mm)
R055301	32
R055302	40
R055303	50
...	...
R055314	250

Manicotto di espansione H
 Dilatation socket H
 Bővítő hüvely H



	Ø (mm)
R055401	32
R055402	40
R055403	50
...	...
R055414	250

Riduzione incorporata
 Internal reduction
 Csökkentés bejegyzett



	Ø (mm)
R055501	32/25
R055502	40/32
R055503	50/40
R055504	50/32
-	-

Riduzione esterna concentrica
 Concentric external reduction
 Csökkentés koncentrikus külső



	Ø (mm)
R055601	250/160
R055602	250/125
R055603	250/110
...	...
R055610	315/100

Riduzione esterna eccentrica
 Excentric external reduction
 Csökkentés excentrikus külső



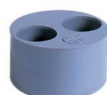
	Ø (mm)
R055701	40/32
R055702	50/40
R055703	50/32
...	...
R055764	315/160

Riduzione 1x / Plug 1x
 Csökkentés 1x



	Ø (mm)
R055801	63/50
R055802	63/40
R055803	63/32
...	...
R055841	125/32

Riduzione 2x / Plug 2x
 Csökkentés 2x



	Ø (mm)
R055901	80/32/32
R055902	90/40/32
R055903	90/32/32
...	...
R055919	125/32/32

Riduzione 3x / Plug 3x
 Csökkentés 3x



	Ø (mm)
R056001	90/32/32/32
R056002	100/40/40/32
R056003	100/40/32/32
...	...
R056015	125/32/32/32

Tappo / Cap
 Dugó



	Ø (mm)
R056101	32
R056102	40
R056103	50
...	...
R056113	200

Tappo ermetico / Tight cap
 Dugó hermetikus



	Ø (mm)
R056202	40
R056203	50
R056204	63
...	...
R056212	200

Scorrevole ♀ × ♀ / Groove ♀ × ♀
 Csúszó ♀ × ♀



	Ø (mm)
R056301	32
R056302	40
R056303	50
...	...
R056310	125

Manicotto ♂ × ♀ / Socket ♂ × ♀
 Muff ♂ × ♀



	Ø (mm)
R056401	32
R056402	40
R056403	50
...	...
R056413	200

Manicotto ♀ × ♀ / Socket ♀ × ♀
 Muff ♀ × ♀



	Ø (mm)
R056501	32
R056502	40
R056503	50
...	...
R056515	200

Manicotto con sigillo / Socket with seal
 Muff pecséttel



	Ø (mm)
R056601	63
R056602	75
R056603	80
R056604	90
R056605	100

Tubazioni in PVC raccordi SN4, KGEM e HT disponibili su richiesta / PVC ducting SN4, KGEM and HT fittings available on request /
 Kérésre PVC csővezetékek SN4, KGEM és HT idomok

Tubo di pressione in PVC / Pressure PVC pipe / PVC nyomócső

PN10



📖	Ø (mm)
R005340	20
R005341	25
R005342	32
...	...
R005321	315

PN16



📖	Ø (mm)
R005300	12
R005301	16
R005302	20
...	...
R005318	315

Trasparente / Translucent
Átlátszó



📖	Ø (mm)
R005240	25
R005241	32
R005242	40
...	...
R005247	110

Raccordi a pressione in PVC / Pressure PVC fittings / PVC nyomószerelvények

Gomito 90° col. ♀ × col. ♀
Elbow 90° solv. ♀ × solv. ♀
Könyök 90° rag. ♀ × rag. ♀



📖	Ø (mm)
R007501	16
R007502	20
R007503	25
...	...
R007520	315

Gomito ridotto 90° col. ♀ × col. ♀
Reduced elbow 90° solv. ♀ × solv. ♀
Könyök csökkent 90° rag. ♀ × rag. ♀



📖	Ø (mm)
R310101	40 × 32
R310102	50 × 32
R310103	50 × 40
R310104	50/40 × 50
R310105	63/50 × 63

Gomito 90° col. ♀ × col. ♂
Elbow 90° solv. ♀ × solv. ♂
Könyök 90° rag. ♀ × rag. ♂



📖	Ø (mm)
R310201	50/40 × 50
R310202	63/50 × 63
-	-

Gomito 45° col. ♀ × col. ♀
Elbow 45° solv. ♀ × solv. ♀
Könyök 45° rag. ♀ × rag. ♀



📖	Ø (mm)
R007601	16
R007602	20
R007603	25
...	...
R007620	315

Gomito 45° col. ♀ × col. ♂
Elbow 45° solv. ♀ × solv. ♂
Könyök 45° rag. ♀ × rag. ♂



📖	Ø (mm)
R310301	50/40 × 50
R310302	63/50 × 63
-	-

Curva 90° corta col. ♀ × col. ♀
Bend 90° short solv. ♀ × solv. ♀
Ív 90° rövid rag. ♀ × rag. ♀



📖	Ø (mm)
R007704	32
R007705	40
R007706	50
...	...
R007720	315

Curva 90° lunga col. ♀ × col. ♀
Bend 90° long solv. ♀ × solv. ♀
Ív 90° hosszú rag. ♀ × rag. ♀



📖	Ø (mm)
R310401	16
R310402	20
R310403	25
...	...
R310413	160

Curva 45° col. ♀ × col. ♀
Bend 45° solv. ♀ × solv. ♀
Ív 45° rag. ♀ × rag. ♀



📖	Ø (mm)
R007804	32
R007805	40
R007806	50
...	...
R007820	315

Pezzo a T col. ♀
Tee solv. ♀
T-darab rag. ♀



📖	Ø (mm)
R007901	16
R007902	20
R007903	25
...	...
R007920	315

Pezzo a T 45° col. ♀ / Tee 45° solv. ♀
T-darab 45° rag. ♀



📖	Ø (mm)
R008001	16
R008002	20
R008003	25
...	...
R008016	250

Pezzo T ridotto col. ♀ / Reduced tee solv. ♀
T-darab csökkent rag. ♀



📖	Ø (mm)
R008101	20 × 16
R008102	25 × 16
R008103	25 × 20
...	...
R008160	315 × 225

Attraverso col. ♀ / Cross solv. ♀
Kereszt rag. ♀



📖	Ø (mm)
R008201	16
R008202	20
R008203	25
...	...
R008210	110

Manicotto col. ♀
Socket solv. ♀
Muff rag. ♀



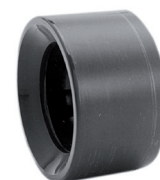
📖	Ø (mm)
R008301	16
R008302	20
R008303	25
...	...
R008320	315

Tappo encol. ♀
Cap solv. ♀
Parafa rag. ♀



📖	Ø (mm)
R008401	16
R008402	20
R008403	25
...	...
R008420	315

Riduzione corta col. ♀ × col. ♂
Reduction short solv. ♀ × solv. ♂
Csökkentés rövid rag. ♀ × rag. ♂



📖	Ø (mm)
R008501	20 × 16
R008502	25 × 16
R008503	25 × 20
...	...
R008580	315 × 280

Riduzione lunga col. ♀ × col. ♀
Reduction long solv. ♀ × solv. ♀
Csökkentés hosszú rag. ♀ × rag. ♀



📖	Ø (mm)
R008601	25/20 × 16
R008602	25/20 × 20
R008603	32/25 × 16
R008604	32/25 × 20
...	...

Sbavatura × col. ♂
Hose barb × solv. ♂
Tömítőszár × rag. ♂



📖	Ø (mm)
R008701	12 × 12
R008702	16 × 16
R008703	20 × 20
...	...
R008708	63 × 60

Collare flangiato scanalatura col. ♀
Flange adapter grooved solv. ♀
Karimás gallér horony rag. ♀



📖	Ø (mm)
R008901	16
R008902	20
R008903	25
...	...
R008920	315

Collare flangiato liscio col. ♀
Flange adapter flat solv. ♀
Karimás gallér sima rag. ♀



📖	Ø (mm)
R310501	16
R310502	20
R310503	25
...	...
R310520	315

Flangia PVC
PVC flange backing ring
Karima PVC



📖	Ø (mm)
R009001	16
R009002	20
R009003	25
...	...
R009020	315

Flangia PA-PRFV
PA-FRP flange backing ring
Karima PA-PRFV



📖	Ø (mm)
R310603	25
R310604	32
R310605	40
...	...
R310615	225

Flangia cieca
Blind flange
Vakkarima



📖	Ø (mm)
R310701	16
R310702	20
R310703	25
...	...
R310720	315

Collare flangiato fisso col. ♀
Flange solv. ♀
Karimás gallér rögzített rag. ♀



📖	Ø (mm)
R310808	75
R310809	90
R310810	110
...	...
R310820	315

Collare flangiato fisso vis. ♀
Flange thr. ♀
Karimás gallér rögzített csav. ♀



📖	Ø
R310901	½"
R310902	¾"
R310903	1"
...	...
R310909	4"

Guarnizione piatta
Flat gasket
Lapos tömítés



📖	Ø (mm)
R009101	16
R009102	20
R009103	25
...	...
R009120	315

Viti in acciaio 5.6 zincato A2 & A4
Screw set 5.6 zinc plated steel, A2 & A4
Horganyzott 5.6 acél csavarok, A2 & A4



📖	Ø (mm)
R311001	M12 × 60
R311002	M16 × 70
R311003	M16 × 80
...	...
R311040	M20 × 340

Gomito 90° col. ♀ × avvit. ♀
Elbow 90° solv. ♀ × thr. ♀
Könyök 90° rag. ♀ × csav. ♀



📖	Ø (mm)
R009201	16 × ¾"
R009202	20 × ½"
R009203	25 × ¾"
...	...
R009207	63 × 2"

Gomito 90° rinforz. col. ♀ × avvit. ♀
Elbow 90° reinforced solv. ♀ × thr. ♀
Könyök 90° megerősített rag. ♀ × csav. ♀



📖	Ø (mm)
R009301	16 × ¾"
R009302	20 × ½"
R009303	25 × ¾"
...	...
R009310	110 × 4"

Gomito 90° col. ♀ × avvit. ♂
Elbow 90° solv. ♀ × thr. ♂
Könyök 90° rag. ♀ × csav. ♂



📖	Ø (mm)
R009405	32 × 1" ¼
R009406	40 × 1" ¼
R009408	50 × 1" ¼
R009409	50 × 1" ½
R009410	50 × 2"

Gomito 90° avvit. ♀ × avvit. ♀
Elbow 90° thr. ♀ × thr. ♀
Könyök 90° csav. ♀ × csav. ♀



📖	Ø
R311101	¾"
R311102	½"
R311103	¾"
...	...
R311110	4"

Gomito 90° rinforz. avvit. ♀ × avvit. ♀
Elbow 90° reinforced thr. ♀ × thr. ♀
Könyök 90° megerősített csav. ♀ × csav. ♀



📖	Ø
R311202	½"
R311203	¾"
R311204	1"
...	...
R311207	2"

Gomito 45° avvit. ♀ × avvit. ♀
Elbow 45° thr. ♀ × thr. ♀
Könyök 45° csav. ♀ × csav. ♀



📖	Ø (mm)
R311302	½"
R311303	¾"
R311304	1"
R311306	1" ½
R311307	2"

Gomito 45° rinforz. col. ♀ × avvit. ♀
Elbow 45° reinforced solv. ♀ × thr. ♀
Könyök 45° megerősített rag. ♀ × csav. ♀



📖	Ø (mm)
R311402	20 × ½"
R311403	25 × ¾"
R311404	32 × 1"
...	...
R311407	63 × 2"

Pezzo a T col. ♀ × avv. ♀
Tee solv. ♀ × thr. ♀
T-darab rag. ♀ × csav. ♀



📖	Ø (mm)
R009507	32 × 1"
R009511	40 × 1" 1/4
R009516	50 × 1" 1/2
R009522	63 × 2"
-	-

Pezzo a T rinforz. col. ♀ × avv. ♀
Tee reinforced solv. ♀ × thr. ♀
T-darab megerősített rag. ♀ × csav. ♀



📖	Ø (mm)
R009601	16 × 3/8"
R009602	20 × 1/2"
R009603	25 × 3/4"
...	...
R009610	110 × 4"

Pezzo a T col. ♀ × avv. ♂
Tee solv. ♀ × thr. ♂
T-darab rag. ♀ × csav. ♂



📖	Ø (mm)
R009705	32 × 1"
R009706	32 × 1" 1/4
R009707	40 × 1"
...	...
R009718	63 × 2"

Pezzo a T 3× avv. ♀
Tee 3× thr. ♀
T-darab 3× csav. ♀



📖	Ø
R311501	3/8"
R311502	1/2"
R311503	3/4"
...	...
R311510	4"

Pezzo a T rinforz. 3× avv. ♀
Tee reinforced 3× thr. ♀
T-darab megerősített 3× csav. ♀



📖	Ø (mm)
R311602	1/2"
R311603	3/4"
R311604	1"
...	...
R311607	2"

Manicotto col. ♀ × avv. ♀
Socket solv. ♀ × thr. ♀
Muff rag. ♀ × csav. ♀



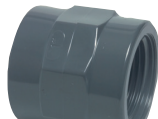
📖	Ø (mm)
R009801	16 × 3/8"
R009802	20 × 1/2"
R009803	25 × 1/2"
...	...
R009813	110 × 4"

Manicotto rinforz. col. ♀ × avv. ♀
Socket reinforced solv. ♀ × thr. ♀
Muff megerősített rag. ♀ × csav. ♀



📖	Ø (mm)
R009901	16 × 3/8"
R009902	20 × 1/2"
R009903	25 × 3/4"
...	...
R009910	110 × 4"

Manicotto avv. ♀ × avv. ♀
Socket thr. ♀ × thr. ♀
Muff csav. ♀ × csav. ♀



📖	Ø
R311701	3/8"
R311702	1/2"
R311703	3/4"
...	...
R311710	4"

Manicotto col. ♀ × avv. ♂
Bush solv. ♀ × thr. ♂
Muff rag. ♀ × csav. ♂



📖	Ø (mm)
R311801	25 × 1/2"
R311802	25 × 3/4"
R311803	32/25 × 1"
...	...
R311838	200 × 8"

Manicotto A col. ♀ × avv. ♂
Bush A solv. ♀ × thr. ♂
Muff A rag. ♀ × csav. ♂



📖	Ø (mm)
R010203	20/16 × 3/8"
R010204	20/16 × 1/2"
R010205	20 × 1/2"
...	...
R010230	110 × 4"

Manicotto B col. ♀ × avv. ♂
Bush B solv. ♀ × thr. ♂
Muff B rag. ♀ × csav. ♂



📖	Ø (mm)
R311901	32/40 × 1"
R311902	32/40 × 1" 1/4
R311903	40/50 × 1" 1/2
...	...
R311908	63/75 × 2" 1/2

Manicotto col. ♂/♀ × avv. ♀
Bush solv. ♂/♀ × thr. ♀
Muff rag. ♂/♀ × csav. ♀



📖	Ø (mm)
R312001	20/16 × 3/8"
R312002	20/16 × 1/2"
R312003	20/16 × 3/4"
...	...
R312026	110/90 × 4"

Manicotto rinforz. col. ♂/♀ × avv. ♀
Bush reinforced solv. ♂/♀ × thr. ♀
Muff megerősített rag. ♂/♀ × csav. ♀



📖	Ø (mm)
R312101	12/16 × 3/8"
R312102	16/20 × 1/2"
R312103	20/25 × 3/4"
...	...
R312107	50/63 × 2"

Manicotto ridotto A col. ♂/♀ × avv. ♀
Reduced bush A solv. ♂/♀ × thr. ♀
Muff csökkent A rag. ♂/♀ × csav. ♀



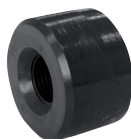
📖	Ø (mm)
R010301	50/40 × 1" 1/2
R010302	63/50 × 2"
R010303	75/63 × 2" 1/2
R010304	90/75 × 3"
-	-

Manicotto ridotto B col. ♂ × avv. ♀
Reduced bush B solv. ♂ × thr. ♀
Muff csökkent B rag. ♂ × csav. ♀



📖	Ø (mm)
R010003	20 × 3/8"
R010004	25 × 3/8"
R010005	25 × 1/2"
...	...
R010031	125 × 4"

Manicotto ridotto C col. ♂ × avv. ♀
Reduced bush C solv. ♂ × thr. ♀
Muff csökkent C rag. ♂ × csav. ♀



📖	Ø (mm)
R312201	50 × 1/2"
R312202	50 × 3/4"
R312203	63 × 1/2"
...	...
R312206	75 × 3/4"

Manicotto ridotto rinforz. col. ♂ × vis. ♀
Reduced bush reinforced solv. ♂ × thr. ♀
Muff csökkent meger. rag. ♂ × csav. ♀



📖	Ø (mm)
R010101	20 × 3/8"
R010102	25 × 1/2"
R010103	32 × 3/4"
...	...
R010106	63 × 1" 1/2

Capezzolo col. ♂ × avv. ♂
Nipple solv. ♂ × thr. ♂
Mellbimbó rag. ♂ × csav. ♂



📖	Ø (mm)
R312301	16 × 3/8"
R312302	20 × 1/2"
R312303	25 × 3/4"
...	...
R312312	63 × 2"

Capezzolo avvit. ♂ × avvit. ♂
Nipple thr. ♂ × thr. ♂
Mellbimbó csav. ♂ × csav. ♂



📖	Ø
R010701	3/8"
R010703	1/2"
R010705	3/4"
...	...
R010713	2"

Capezzolo ridotto avvit. ♂ × avvit. ♂
Reduced nipple thr. ♂ × thr. ♂
Mellbimbó csökkent csav. ♂ × csav. ♂



📖	Ø
R010704	1/2" × 3/8"
R010706	3/4" × 1/2"
R010708	1" × 3/4"
...	...
R010720	2" × 1" 1/2"

Capezzolo avvit. ♂ avvit. vis. ♀
Nipple thr. ♂ × thr. ♀
Mellbimbó csav. ♂ × csav. ♀



📖	Ø
R312501	3/8" × 1/2"
R312502	1/2" × 3/8"
R312503	1/2" × 3/4"
...	...
R312533	4" × 3"

Tappo avvit. ♀
Cap thr. ♀
Parafa csav. ♀



📖	Ø (mm)
R010601	3/8"
R010602	1/2"
R010603	3/4"
...	...
R010607	2"

Tappo avvit. ♂
Plug thr. ♂
Parafa csav. ♂



📖	Ø (mm)
R010801	3/8"
R010802	1/2"
R010803	3/4"
...	...
R010807	2"

Sbavatura × avvit. ♂ o ♀
Hose barb × thr. ♂ or ♀
Tömlőszár × csav. ♂ vagy ♀



📖	Ø (mm)
R010902	3/8" × 16/18
...	...
R010915	2" × 60/66
R010921	3/4" × 16/18
...	...
R010932	2" 1/2 × 60

Attraversamenti flangia × avvit. ♂/♀
Bulkhead fitting flange × thr. ♂/♀
Falátkelőhelyek karima × csav. ♂/♀



📖	Ø (mm)
R011001	16 × 3/8"
R011002	20 × 1/2"
R011003	25 × 3/4"
R011004	40 × 1" 1/2"
R011005	63 × 2"

Attraversamenti col. ♂/♀ × avvit. ♂
Bulkhead fitting solv. ♂/♀ × thr. ♂
Falátkelőhelyek rag. ♂/♀ × csav. ♂



📖	Ø (mm)
R312601	20/25 × 3/4"
R312602	25/32 × 1"
R312603	32/40 × 1" 1/4"
...	...
R312610	110 × M133

Attraversamenti col. ♀/avvit. ♂ × avvit. ♂
Bulkhead fitting solv. ♀/thr. ♂ × thr. ♂
Falátkelőhelyek rag. ♀/csav. ♂ × csav. ♂



📖	Ø (mm)
R312701	20 × 3/4"
R312702	25 × 1"
R312703	32 × 1" 1/4"
...	...
R312709	90 × M113/4"

Unione col. ♀ × col. ♀
Union solv. ♀ × solv. ♀
Unió rag. ♀ × rag. ♀



📖	Ø (mm)
R011302	16
R011303	20
R011304	25
...	...
R011311	110

Unione col. ♀ × avvit. ♀
Union solv. ♀ × thr. ♀
Unió rag. ♀ × csav. ♀



📖	Ø (mm)
R011501	16 × 3/8"
R011502	20 × 1/2"
R011503	25 × 3/4"
...	...
R011510	110 × 4"

Unione col. ♀ × avvit. ♂
Union solv. ♀ × thr. ♂
Unió rag. ♀ × csav. ♂



📖	Ø (mm)
R011401	16 × 3/8"
R011402	20 × 1/2"
R011403	25 × 3/4"
...	...
R011410	110 × 4"

Unione avvit. ♀ × avvit. ♀
Union thr. ♀ × thr. ♀
Unió csav. ♀ × csav. ♀



📖	Ø
R312801	3/8"
R312802	1/2"
R312803	3/4"
...	...
R312810	4"

Unione avvit. ♀ × avvit. ♂
Union thr. ♀ × thr. ♂
Unió csav. ♀ × csav. ♂



📖	Ø (mm)
R312902	1/2"
R312903	3/4"
R312904	1"
...	...
R312910	4"

Collare dell'Unione
Union end
Szakszerkezeti gallér



📖	Ø (mm)
R313001	16
R313002	20
R313003	25
...	...
R313010	110

Manica dell'Unione
Union bush
Unió ujjú



📖	Ø (mm)
R313101	16
R313102	20
R313103	25
...	...
R313110	110

Dado dell'Unione
Union nut
Unió anya



📖	Ø (mm)
R313201	16
R313202	20
R313203	25
...	...
R313210	110

Sigillo dell'Unione
Union O-ring
Unió közös



📖	Ø (mm)
R313301	16
R313302	20
R313303	25
...	...
R313310	110

Collare di sostegno ♀ / Bolt saddle ♀
Tám gallér ♀



📖	Ø (mm)
R044401	20 × ½"
R044402	25 × ½"
R044403	25 × ¾"
...	...
R044490	315 × 4"

Connett. per tubi col. ♀ / Pipe connector ♀
Csőcsatlakozó rag. ♀



📖	Ø (mm)
R011204	50 × ½"
R011207	63 × ½"
-	-

Collettore 3× / 3× Collector
Gyűjtő 3×



📖	Ø (mm)
R313701	50
R313702	63
-	-

🔗 *Tabella di corrispondenza per i diametri dei tubi in PVC pag. 201 / PVC piping diameter conversion table page 201*
TA PVC csőátmérők megfeleléségi táblázata 201. oldal

dimensioni imperiali disponibili su richiesta / imperial dimensions available on request / birodalmi méretek kérésre elérhetőek

Valvole in PVC a sfera a 2-vie / 2-ways PVC ball valves / PVC 2-utas golyóscsapok

S4 col. ♀ / S4 solv. ♀
S4 rag. ♀



📖	Ø (mm)
R121116	16
R121118	20
R121120	25
...	...
R121746	110

S4 col. ♂ / S4 solv. ♂
S4 rag. ♂



📖	Ø (mm)
R121239	16
R121241	20
R121243	25
...	...
R125274	110

S4 avv. ♀ / S4 thr. ♀
S4 csav. ♀



📖	Ø
R121132	¾"
R121134	½"
R121136	¾"
...	...
R121148	3"

S4 flangia / S4 flange
S4 karima



📖	Ø (mm)
R124200	16
R122277	20
R122276	25
...	...
R124209	110

S4 fusione PE ♀ / S4 PE fusion ♀
S4 PE fúzió ♀



📖	Ø (mm)
R125357	16
R125358	20
R125359	25
...	...
R125366	110

S4 fusione PE ♂ / S4 PE fusion ♂
S4 PE fúzió ♂



📖	Ø (mm)
R121150	16
R121152	20
R121154	25
...	...
R122637	110

Staffa S4 / S4 Bracket
Zárójel S4



📖	DN
R170276	10/15
R170277	20
R170278	25
...	...
R170267	80

Scatola di finecorsa / Limit switch box
Végálláskapcsoló doboz



📖	Ø (mm)
R300110	50
R300120	63
-	-

S6 col. ♀ / S6 solv. ♀
S6 rag. ♀



📖	Ø (mm)
R012001	16
R012002	20
R012003	25
...	...
R012010	110

S6 avv. ♀ / S6 thr. ♀
S6 csav. ♀



📖	Ø
R127701	¾"
R127702	½"
R127703	¾"
...	...
R129027	2" ½"

S6 fusione PE ♀ / S6 PE fusion ♀
S6 PE fúzió ♀



📖	Ø (mm)
R126966	16
R126967	20
R126968	25
...	...
R129021	75

S6 fusione PE ♂ / S6 PE fusion ♂
S6 PE fúzió ♂



📖	Ø (mm)
R127706	16
R127707	20
R127708	25
...	...
R129023	75

Valvole disponibili anche in PP o PVDF
Valves also available made of PP or PVDF
PP vagy PVDF szelepek is kaphatók

Valvole in PVC a sfera a 3-vie / 3-ways PVC ball valves / PVC 3-utas golyóscsapok

 S4 L col. ♀ / S4 L solv. ♀
 S4 L rag. ♀


📖	Ø (mm)
R120626	16
R120628	20
R121832	25
...	...
R122719	63

 S4 L avviti. ♀ / S4 L thr. ♀
 S4 L csav. ♀

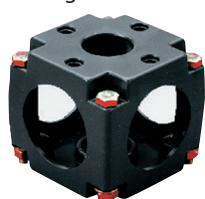

📖	Ø
R120635	3/8"
R120637	1/2"
R120942	3/4"
...	...
R120606	2"

 S4 T col. ♀ / S4 T solv. ♀
 S4 T rag. ♀


📖	Ø (mm)
R120625	16
R120627	20
R121816	25
...	...
R122716	63

 S4 T avviti. ♀ / S4 T thr. ♀
 S4 T csav. ♀


📖	Ø
R120634	3/8"
R120636	1/2"
R120938	3/4"
...	...
R120941	2"

 Supporto S4 / S4 bracket
 Támogatás S4


📖	DN
R170042	10/15
R170022	20/25
R170001	32/40
R170018	50
-	-

 Scatola di finecorsa / Limit switch box
 Végálláskapcsoló doboz


📖	Ø (mm)
R300110	50
R300120	63
-	-

Valvole in PVC a membrana in PVC / PVC diaphragm valves / PVC membránszelepek

 T4 col. ♀ / T4 solv. ♀
 T4 rag. ♀


📖	Ø (mm)
R012402	20
R012403	25
R012404	32
...	...
R012407	63

 T4 col. ♂ / T4 solv. ♂
 T4 rag. ♂


📖	Ø (mm)
R122205	20
R122206	25
R122207	32
...	...
R120186	75

 T4 avviti. ♀ / T4 thr. ♀
 T4 csav. ♀


📖	Ø
R127130	1/2"
R127131	3/4"
R127132	1"
...	...
R127135	2"

 T4 flangia / T4 flange
 T4 karima


📖	Ø (mm)
R120189	20
R120190	25
R120191	32
...	...
R120198	75

 T4 fusione PE ♀ / T4 PE fusion ♀
 T4 PE fúzió ♀


📖	Ø (mm)
R127136	20
R127137	25
R127138	32
...	...
R127141	63

 T4 fusione PE ♂ / T4 PE fusion ♂
 T4 PE fúzió ♂


📖	Ø (mm)
R127142	20
R127143	25
R127144	32
...	...
R127147	63

 Membrana con vite
 Diaphragm with screw
 Membrán csavarral


📖	DN
R250457	15/20
R250458	25
R250459	32/40
...	...
R120934	100/125

 Membrana nuda
 Diaphragm without screw
 Csupasz membrán


📖	DN
R250461	15/20
R250462	25
R250463	32/40
R250464	50
-	-

 Piastra di montaggio
 Mounting plate
 Tartó lemez


📖	↑ (mm) - DN
R101256	16 - 10/20/25
R101255	23 - 15/20/25
R101257	3 - 15/20/25
...	...
R101260	7 - 32/40/50

Valvole disponibili anche in PP o PVDF
 Valves also available made of PP or PVDF
 PP vagy PVDF szelepek is kaphatók

Valvole a saracinesche / Gate valves / Tolózárak szelepek

Valvola a sede inclinata PVC
PVC slanted seat valve
PVC ferde ülészelep



	Ø (mm)
R013850	16
R013851	20
R013852	25
...	...
R013856	63

Valvola a sede inclinata PP
PP slanted seat valve
PP ferde ülészelep



	Ø (mm)
R013901	½"
R013902	¾"
R013903	1"
...	...
R013906	2"

Valvola a saracinesca PP o PVC
PP or PVC gate valve
PP vagy PVC tolózár



	Ø (mm)
R013801	¾"
R013802	1"
-	-

Valvole a farfalla & a ghigliottina in PVC / PVC butterfly & slide gate valves / PVC pillangó & guillotine szelepek

Farfalla K4
Butterfly K4
Pillangó K4



	Ø (mm)
R012802	63/75
R012804	90
R012805	110
...	...
R012809	250

Farfalla K4 ingranaggio a vite senza fine
Butterfly K4 worm gear
Pillangó K4 csigakerék



	Ø (mm)
R126010	75
R126011	90
R126012	110
...	...
R126014	225

Farfalla S4
Butterfly S4
Pillangó S4



	Ø (mm)
R012790	63
R012791	75
R121919	90
...	...
R121872	225

Set vite e controflangia
Screw and counter-flange set
Csavar és ellenkarima készlet



	Ø (mm)
R012851	75
R012852	90
R012853	110
...	...
R012859	250

Ghigliottina PVC col. ♀
Slide gate PVC solv. ♀
Guillotine rag. ♀



	Ø (mm)
R270968	50
R270632	63
R270632	63
...	...
R271461	110

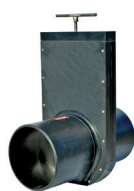
Ghigliottina inoss. col. ♀
Slide gate st. steel solv. ♀
Guillotine rag. ♀



	Ø (mm)
R013979	90
R013980	110
R013982	160
...	...
R013985	315

Vannes PEHD Proagria / Proagria HDPE valves / Válvulas de PEAD Proagria

SVL ghigliottina / SVL sliding valve
SVL guillotine



	DN
R014001	100
R014002	125
R014003	150
...	...
R014006	300

SVLT ghigliottina / SVLT sliding valve
SVLT guillotine



	DN
R060101	100
R060102	125
R060103	150
...	...
R060106	300

FVL ghigliottina / FVL sliding valve
FVL guillotine



	DN
R060201	100
R060202	125
R060203	150
...	...
R060206	300

RVL ghigliottina / RVL sliding valve
RVL guillotine



	DN
R060301	100
R060302	125
R060303	150
...	...
R060306	300

GV ghigliottina / GV sliding valve
GV guillotine



	DN
R060401	100
R060402	125
R060403	150
...	...
R060406	300

SVM-TG 1 con volante / SVM-TG 1 stop valve
SVM-TG 1 kormánykerékkel



	DN
R014101	100
R014102	125
R014103	150
...	...
R014109	600

SVM-TG 2 con volante / SVM-TG 2 stop valve
SVM-TG 2 kormánykerékkel



	DN
R060501	700
R060502	800
R060503	900
R060504	1000
R060505	1200

RVM-TG con volante / RVM-TG stop valve
RVM-TG kormánykerékkel



	DN
R060601	100
R060602	125
R060603	150
...	...
R060609	600

DV farfalla / DV butterfly valve
DP pillangó



	DN
R060701	100
R060702	125
R060703	150
...	...
R060709	500

TV 3-vie / TV 3-ways
TV 3-irányú



	DN
R060801	100
R060802	125
R060803	150
R060804	200
-	-

TV-B 3-vie / TV-B 3-ways
TV-B 3-irányú



	DN
R060901	100
R060902	125
R060903	150
R060904	200
-	-

SPP serratura / SPP sluice gate
SPP zár



	DN
R061001	100
R061002	125
R061003	150
-	-

SPH serratura / SPH sluice gate
SPH zár



	DN
R061101	100
R061102	125
R061103	150
-	-

SPS-TL serratura / SPS-TL sluice gate
SPS-TL zár



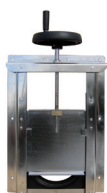
	DN
R014201	200
R014202	250
R014203	300
...	...
R014206	600

SPS-RTL serratura / SPS-RTL sluice gate
SPS-RTL zár



	DN
R061201	200
R061202	250
R061203	300
...	...
R061206	600

SPS-TG sbarramento / SPS-TG weir gate
SPS-TG vízfogó



	DN
R061301	200
R061302	250
R061303	300
...	...
R061306	600

SPK-TG sbarramento / SPK-TG weir gate
SPK-TG vízfogó



	DN
R014302	150
R014303	200
R014304	250
...	...
R014308	800

SPK-B-TG sbarramento / SPK-B-TG weir gate
SPK-B-TG vízfogó



	DN
R061501	200
R061502	250
R061503	300
...	...
R061508	800

SPM-S-TG sbarr. / SPM-S-TG weir gate
SPM-S-TG vízfogó



	DN
R061603	800
R061604	1000
R061605	1200
R061606	1400

SPM-H-TG sbarr. / SPM-H-TG weir gate
SPM-H-TG vízfogó



	→↑ (mm)
R061751	630
R061752	800
R061753	1000
R061754	1200

SPM-P-TG sbarr. / SPM-P-TG weir gate
SPM-P-TG vízfogó



	→↑ (mm)
R061703	800
R061704	1000
R061705	1200
R061706	1400

MPV-TG traboccare / MPV-TG overflow gate
MPV-TG túlsordulás



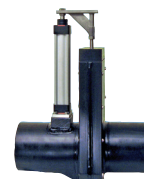
	→↑ (mm)
R061801	ⓘ
...	

KS otturatore / KS channel sluice
KS redőny



	→↑ (mm)
R061901	600 × 400
R061902	500 × 600
R061903	700 × 600
R061904	900 × 600
R061905	900 × 700

Attuatori / Actuators
Működtetők



	DESCR.
R062010	elec.
R062020	pneum.
R062030	hydr. / hidr.
-	-
-	-

SPU lavaggio idraulico / SPU flushing gate
SPU hidraulikus öblítés



	→↑ (mm)
R062101	ⓘ
...	

ALU tavole / ALU stop log
ALU táblák



	→↑ (mm)
R062201	ⓘ
...	

KVR valvola a cerniera / KVR flap valve
KVR csappantyús szelep



	DN
R062301	100
R062302	150
-	-

KVM valvola a cerniera / KVM flap valve
KVM csappantyús szelep



	DN
R062401	100
R062402	125
R062403	150
-	-

KVI valvola a cerniera / KVI flap valve
KVI csappantyús szelep



	DN
R062501	100
R062502	150
-	-

KVF valvola a cerniera / KVF flap valve
KVF csappantyús szelep



	DN
R062601	100
R062602	150
-	-

OPV valvola a cerniera / OPV flap valve
OPV csappantyús szelep



📖	DN
R062701	100
R062702	150
-	-

IKV valvola a cerniera / IKV flap valve
IKV csappantyús szelep



📖	DN
R062801	100
R062802	150
-	-

IKF valvola a cerniera / IKF flap valve
IKF csappantyús szelep



📖	DN
R062901	100
R062902	150
R062903	200
-	-

Valvole di controllo / Regulation valves / Valvole di controllo

Valvola di controllo idraulico On/Off
On/Off hydraulic control valve
On/Off hidraulikus vezérlőszelep



📖	DN
R070101	40
R070102	50
R070103	65
...	...
R070106	150

Regolatore di pressione ad azione diretta
Direct acting pressure reducing valve
Közvetlen működésű nyomásszabályozó



📖	Ø
R070201	¾"
R070202	1"
R070203	1" ½
-	-

Riduttore di pressione
Pressure reducing valve
Nyomáscsökkentő



📖	DN
R070301	40
R070302	50
R070303	65
...	...
R070306	150

Riduttore e stabilizzatore di pressione
Pressure reducing and sustaining valve
Nyomáscsökkentő és stabilizátor



📖	DN
R070401	40
R070402	50
R070403	65
...	...
R070406	150

Stabilizzatore di pressione
Pressure sustaining valve
Nyomásstabilizátor



📖	DN
R070501	40
R070502	50
R070503	65
...	...
R070506	150

Valvola di sovrappressione
Pressure relief valve
Nyomáscsökkentő szelepet



📖	DN
R070601	40
R070602	50
R070603	65
...	...
R070606	150

Valvola di controllo del flusso
Flow control valve
Áramlásszabályozó szelep



📖	DN
R070701	40
R070702	50
R070703	65
...	...
R070706	150

Regolatore di flusso, riduttore di pressione
Flow control and pressure reducing valve
Áramlásszabályozó, nyomáscsökkentő



📖	DN
R070801	40
R070802	50
R070803	65
...	...
R070806	150

Valvola di controlavaggio idraulica
Filter backwash hydraulic valve
Hidraulikus visszamosó szelep



📖	DN
R070901	50 × 50
R070902	80 × 80
R070903	80 × 80 / 50
-	-

☞ Tabella di corrispondenza per i diametri dei tubi in PVC pag. 201 / PVC piping diameter conversion table page 201
TA PVC csőátmérők megfeleléségi táblázata 201. oldal

Valvole miscelatrici & divisorie / Mixing valves / Keverő & osztó szelepek

PVC / PVC
PVC



📖	Ø
R071601	2"
R071602	3"
-	-

Ghisa / Cast iron
Öntöttvas



📖	DN
R071701	15
R071702	20
R071703	25
...	...
R071709	100

Bronzo / Bronze
Bronz



📖	Ø (mm)
R071801	15
R071802	20
R071803	25
...	...
R071806	50

Valvole in PVC a sfera ad azionamento elettrico / Electric actuated PVC ball valves / Elektromos működtetésű PVC golyóscsapok

 S4 2x col. \varnothing 24V / S4 2x solv. \varnothing 24V
 S4 2x rag. \varnothing 24V


	\varnothing (mm)
R125549	16
R125550	20
R125551	25
...	...
R122223	110

 S4 2x avvit. \varnothing 24V / S4 2x thr. \varnothing 24V
 S4 2x csav. \varnothing 24V


	\varnothing (mm)
R122678	16
R127246	20
R127247	25
...	...
R127333	90

 S4 2x flangia 24V / S4 2x flange 24V
 S4 2x karima 24V


	\varnothing (mm)
R127043	16
R127044	20
R122787	25
...	...
R127340	110

 S4 2x col. \varnothing 230V / S4 2x solv. \varnothing 230V
 S4 2x rag. \varnothing 230V


	\varnothing (mm)
R125549	16
R125550	20
R125551	25
...	...
R122225	110

 S4 2x avvit. \varnothing 230V / S4 2x thr. \varnothing 230V
 S4 2x rosc. \varnothing 230V


	\varnothing (mm)
R122678	16
R127246	20
R127247	25
...	...
R127353	90

 S4 2x flangia 230V / S4 2x flange 230V
 S4 2x karima 230V


	\varnothing (mm)
R127043	16
R127044	20
R122787	25
...	...
R127360	110

 S4 3x T col. \varnothing 24V
 S4 3x T solv. \varnothing 24V
 S4 3x T rag. \varnothing 24V


	\varnothing (mm)
R125558	16
R125559	20
R125560	25
...	...
R122231	63

 S4 3x L col. \varnothing 230V
 S4 3x L solv. \varnothing 230V
 S4 3x L rag. \varnothing 230V

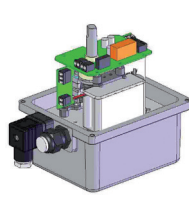

	\varnothing (mm)
R125558	16
R125559	20
R125560	25
...	...
R121995	63

 Attuatore ER Premier
 Actuator ER Premier
 Működtető ER Premier

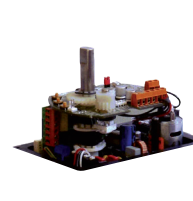

	ϵ (Nm) / \swarrow (V)
R301001	20 / 230
R301002	20 / 24
...	...
R301005	100 / 230
R301006	100 / 24

 Attuatore ER Plus
 Actuator ER Plus
 Működtető ER Plus

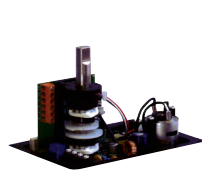

	ϵ (Nm) / \swarrow (V)
R301101	10 / 230
R301102	10 / 24
...	...
R301111	100 / 230
R301112	100 / 24

 Sistema di sicurezza ER Plus Failsafe
 Security system ER Plus Failsafe
 Biztonsági rendszer ER Plus Failsafe


	DESCR.
R301201	Failsafe
-	-

 Sistema di posizionamento ER Plus Posi
 Positioning system ER Plus Posi
 Pozícionáló rendszer ER Plus Posi


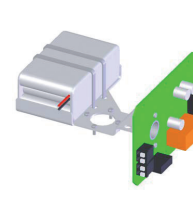
	DESCR.
R301301	Posi
-	-

 Opzione 3 posizioni ER Plus GF3
 Option 3 positions ER Plus GF3
 3. lehetőség pozíciók ER Plus GF3


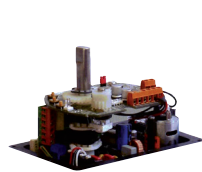
	DESCR.
R301401	GF3
-	-

 Attuatore VR-VS
 Actuator VR-VS
 Működtető VR-VS

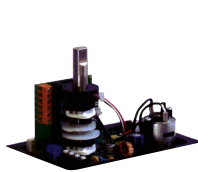

	ϵ (Nm) / \swarrow (V)
R301501	25 / 400
R301502	25 / 230
R301503	25 / 24
...	...
R301522	1000 / 230

 Sistema di sicurezza VR-VS Failsafe
 Security system VR-VS Failsafe
 Biztonsági rendszer VR-VS Failsafe


	DESCR.
R301601	Failsafe
-	-

 Sistema di posizionamento VR-VS Posi
 Positioning system VR-VS Posi
 Pozícionáló rendszer VR-VS Posi


	DESCR.
R301701	Posi
-	-

 Opzione 3 posizioni VR-VS Plus GF3
 Option 3 positions VR-VS Plus GF3
 3. lehetőség pozíciók VR-VS Plus GF3


	DESCR.
R301801	GF3
-	-

 Set adattatori valvola elettrica
 Electric adapter set
 Adapterkészlet elektromos szelephöz


	DN
R122103	10/15
R122083	20/25
R121985	32
...	...
R122065	80

**Valvole in PVC a sfera ad azionamento pneumatico / Pneumatic actuated PVC ball valves /
Pneumatikus működtetésű PVC golyóscsapok**

S4 2x col. ♀ NC / S4 2x solv. ♀ NC
S4 2x rag. ♀ NA



📖	Ø (mm)
R122408	16
R122409	20
R122410	25
...	...
R122417	110

S4 2x avvit. ♀ NC / S4 2x thr. ♀ NC
S4 2x csav. ♀ NA



📖	Ø
R127432	3/8"
R127433	1/2"
R127434	3/4"
...	...
R127440	3"

S4 2x flangia NC / S4 2x flange NC
S4 2x karima NA



📖	Ø (mm)
R127452	16
R127453	20
R127454	25
...	...
R127461	110

S4 2x col. ♀ NA / S4 2x solv. ♀ NO
S4 2x rag. ♀ NN



📖	Ø (mm)
R124470	16
R124471	20
R124472	25
...	...
R124479	110

S4 2x avvit. ♀ NA / S4 2x thr. ♀ NO
S4 2x csav. ♀ NN



📖	Ø (mm)
R127513	3/8"
R127514	1/2"
R127515	3/4"
...	...
R127521	3"

S4 2x flangia NA / S4 2x flange NO
S4 2x karima NN



📖	Ø (mm)
R127533	16
R127534	20
R127535	25
...	...
R127542	110

S4 2x col. ♀ DA / S4 2x solv. ♀ DA
S4 2x rag. ♀ KC



📖	Ø (mm)
R122418	16
R122419	20
R122420	25
...	...
R122427	110

S4 2x avvit. ♀ DA / S4 2x thr. ♀ DA
S4 2x csav. ♀ KC



📖	Ø (mm)
R127574	3/8"
R127575	1/2"
R127576	3/4"
...	...
R127582	3"

S4 2x flangia DA / S4 2x flange DA
S4 2x karima KC



📖	Ø (mm)
R127594	16
R127595	20
R127596	25
...	...
R127603	110

S4 3x L col. ♀ NC / S4 3x L solv. ♀ NC
S4 3x L rag. ♀ NA



📖	Ø (mm)
R125762	16
R125763	20
R125764	25
...	...
R125768	63

S4 3x L col. ♀ NA / S4 3x L solv. ♀ NO
S4 3x L rag. ♀ NN



📖	Ø (mm)
R126716	16
R126717	20
R126718	25
...	...
R126722	63

S4 3x L col. ♀ DA / S4 3x L solv. ♀ DA
S4 3x L rag. ♀ KC



📖	Ø (mm)
R126700	16
R126701	20
R126702	25
...	...
R126706	63

S4 3x T col. ♀ NC / S4 3x T solv. ♀ NC
S4 3x T rag. ♀ NA



📖	Ø (mm)
R126713	16
R124998	20
R124999	25
...	...
R125321	63

S4 3x T col. ♀ NA / S4 3x T solv. ♀ NO
S4 3x T rag. ♀ NN



📖	Ø (mm)
R126723	16
R126724	20
R126725	25
...	...
R126729	63

S4 3x T col. ♀ DA / S4 3x T solv. ♀ DA
S4 3x T rag. ♀ KC



📖	Ø (mm)
R126707	16
R126708	20
R125317	25
...	...
R126712	63

Fincorsa
Limit switch box
Végálláskapcsoló



📖	DESCR.
R250914	UT
-	-

Elettrovalvola Namur
Namur solenoid valve
Namur mágnesszelep



📖	↗
R250062	24 VDC
R250061	230 VAC
-	-

Set di adattatori pneumatici
Pneumatic adapter set
Pneumatikus adapter készlet



📖	Ø (mm)
R122103	10/15
R122083	20/25
R121985	32
...	...
R122065	80

Nota / Note / Jegyzet :

NC / NC / NA = normalmente chiuso / normally closed / normál esetben zárva
NA / NO / NN = normalmente aperto / normally open / normál esetben nyitva
DA / DA / KC = doppio effetto / double acting / kettős hatás

**Valvole in PVC a membrana ad azionamento pneumatico / Pneumatic actuated PVC diaphragm valves /
 Pneumatikus működtetésű PVC membránszelepek**

 T4 2x col. ♀ NC / T4 2x solv. ♀ NC
 T4 2x rag. ♀ NA


	Ø (mm)
R125616	20
R125619	25
R125622	32
...	...
R125631	63

 T4 2x col. ♂ NC / T4 2x solv. ♂ NC
 T4 2x rag. ♂ NA


	Ø (mm)
R125588	20
R125591	25
R125594	32
...	...
R125603	63

 T4 2x flangia NC / T4 2x flange NC
 T4 2x karima NA


	Ø (mm)
R125652	20
R125655	25
R125658	32
...	...
R125667	63

 T4 2x col. ♀ NA / T4 2x solv. ♀ NO
 T4 2x rag. ♀ NN


	Ø (mm)
R125642	20
R125644	25
R125645	32
...	...
R125648	63

 T4 2x col. ♂ NA / T4 2x solv. ♂ NO
 T4 2x rag. ♂ NN


	Ø (mm)
R126051	20
R126053	25
R126055	32
...	...
R126061	63

 T4 2x flangia NA / T4 2x flange NO
 T4 2x karima NN


	Ø (mm)
R126086	20
R126088	25
R126090	32
...	...
R126096	63

 T4 2x col. ♀ DA / T4 2x solv. ♀ DA
 T4 2x rag. ♀ KC


	Ø (mm)
R125635	20
R125636	25
R125637	32
...	...
R125640	63

 T4 2x col. ♂ DA / T4 2x solv. ♂ DA
 T4 2x rag. ♂ KC


	Ø (mm)
R125607	20
R125608	25
R125609	32
...	...
R125612	63

 T4 2x flangia DA / T4 2x flange DA
 T4 2x karima KC


	Ø (mm)
R125671	20
R125672	25
R125673	32
...	...
R125676	63

 T4 2x col. ♀ Comp. Pos. 4-20 mA
 T4 2x solv. ♀ Comp. Pos. 4-20 mA
 T4 2x rag. ♀ Comp. Poz. 4-20 mA


	Ø (mm)
R126651	20
R126652	25
R126653	32
...	...
R126656	63

 Finecorsa
 Limit switch box
 Végálláskapcsoló


R250908	12-48 VAC/DC
R250910	110-250 VAC/DC
R250912	10-30 VDC

 Elettrovalvola Namur
 Namur solenoid valve
 Namur mágnesszelep


	Ø (mm)
R250062	24 VDC
R250061	230 VAC
-	-

 T4 2x col. ♀ azione diretta
 T4 2x solv. ♀ direct acting
 T4 2x rag. ♀ közvetlen cselekvés


	Ø (mm)
R122816	20
R122817	25
R122818	32
...	...
R122821	63

 T4 2x col. ♂ azione diretta
 T4 2x solv. ♂ direct acting
 T4 2x rag. ♂ közvetlen cselekvés


	Ø (mm)
R122822	20
R122823	25
R122824	32
...	...
R122827	63

 Piastra di montaggio
 Mounting plate
 Tartó lemez


	↑ (mm) - DN
R101256	16 - 10/20/25
R101255	23 - 15/20/25
R101257	3 - 15/20/25
...	...
R101260	7 - 32/40/50

**Valvole in PVC a farfalla ad azionamento elettrico / Electric actuated PVC butterfly valves /
 Elektromos működtetésű PVC pillangószelepek**

 K4 24V / K4 24V
 K4 24V


	DN
R301901	40
R301902	50
R301903	65
...	...
R301911	300

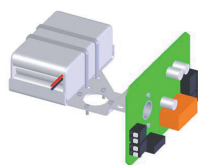
 K4 230V / K4 230V
 K4 230V


	DN
R302001	40
R302002	50
R302003	65
...	...
R302011	300

 K4 400V / K4 400V
 K4 400V

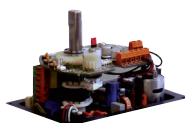

	DN
R302101	40
R302102	50
R302103	65
...	...
R302111	300

Sistema di sicurezza VR-VS Failsafe
Security system VR-VS Failsafe
Biztonsági rendszer VR-VS Failsafe



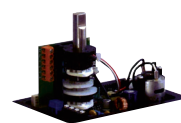
📖	DESCR.
R301601	Failsafe
-	-

Sistema di posizionamento VR-VS Posi
Positioning system VR-VS Posi
Pozícionáló rendszer VR-VS Posi



📖	DESCR.
R301701	Posi
-	-

Opzione 3 posizioni VR-VS Plus GF3
Option 3 positions VR-VS Plus GF3
3. lehetőség pozíciók VR-VS Plus GF3



📖	DESCR.
R301801	GF3
-	-

**Valvole in PVC a farfalla ad azionamento pneumatico / Pneumatic actuated PVC butterfly valves /
Pneumatikus működtetésű PVC pillangószelepek**

K4 NC / K4 NC
K4 NA



📖	Ø (mm)
R125885	75
R125886	90
R125887	110
...	...
R125889	225

K4 NA / K4 NO
K4 NN



📖	Ø (mm)
R125935	75
R125936	90
R125937	110
...	...
R125939	225

K4 DA / K4 DA
K4 KC



📖	Ø (mm)
R125910	75
R125911	90
R125912	110
...	...
R125914	225

S4 NC / S4 NC
S4 NA



📖	Ø (mm)
R122932	90
R122933	110
R122934	140
...	...
R122936	225

S4 NA / S4 NO
S4 NN



📖	Ø (mm)
R122339	90
R122340	110
R122342	140
...	...
R122341	225

S4 DA / S4 DA
S4 KC



📖	Ø (mm)
R122331	90
R122332	110
R122337	140
...	...
R122338	225

Fincorsa
Limit switch box
Végálláskapcsoló



📖	Ø (mm)
R250914	UT
-	-

Elettrovalvola Namur
Namur solenoid valve
Namur mágnesszelep



📖	Ø (mm)
R250062	24 VDC
R250061	230 VAC
-	-

Set di adattatori pneumatici
Pneumatic adapter set
Pneumatikus adapter készlet



📖	Ø (mm)
R122103	10/15
R122083	20/25
R121985	32
...	...
R122065	80

Nota / Note / Jegyzet :

NC / NC / NA = normalmente chiuso / normally closed / normál esetben zárva
NA / NO / NN = normalmente aperto / normally open / normál esetben nyitva
DA / DA / KC = doppio effetto / double acting / kettős hatás

**Elettrovalvole / Solenoid valves /
Mágnesszelepek**

Azione diretta - Pistone
Direct acting - Plunger
Közvetlen fellépés - Dugattyú



📖	DESCR.
R072501	6011
R072502	6013
R072503	0255
...	...
R072509	0355

Azione diretta - Perno
Direct acting - Pivot
Közvetlen szereplés - Pivot



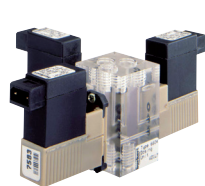
📖	DESCR.
R072601	0124
R072602	0330
R072603	0331
R072604	0121
-	-

Azione diretta - Dondolo
Direct acting - Rocker
Közvetlen színészi játék - Ringató



📖	DESCR.
R072701	6126
R072702	6128
R072703	0127
...	...
R072706	6106

Azione diretta - Lanciando
Direct acting - Flipper
Közvetlen színészi játék - Lapozás



📖	DESCR.
R072801	6124
R072802	6144
R072803	6650
R072804	6604
-	-

Servoassistito - Membrana
Servo-assisted - Plunger & diaphragm
Szervóval segített - Membrán



📖	DESCR.
R072901	5281
R072902	5282
R072903	6211
R072904	6227
R072905	6228

Servoassistito - Pistone
Servo-assisted - Piston
Szervóval segített - Dugattyú



📖	DESCR.
R073001	0406
R073002	5404
R073003	6221
...	...
R073006	0344

Servoassistito - Driver & membrana
Servo-assisted - Isolated pilot & diaphragm
Szervóval segített - Meghajtó & membrán



📖	DESCR.
R073101	5282
R073102	0142
R073103	6642
R073104	6212
-	-

Servoassistito - Accoppiato a molla
Servo-assisted - Spring coupled
Szervóval segített - Tavasz párosítva



📖	DESCR.
R073201	6213
-	-

Servoassistito - Accoppiamento duro
Servo-assisted - Hard coupled
Szervóval segített - Kemény csatolású



📖	DESCR.
R073301	6240
R073302	0290
R073303	0407
-	-

Temporizzatore
Timer control
Időzítő vezérlés



📖	DESCR.
R073401	1078-1
R073402	1078-2
-	-

Controllo proporzionale
Proportional control
Arányos szabályozás



📖	DESCR.
R073501	8605
-	-

Ossigeno
Oxygen
Oxigén

G 1/8" - IP67
P: 0,2... 7 bar



📖	DESCR.
E033010	24 VDC ∅∅
E033020	230 V ∅∅
E033030	24 VDC ∅∅
E033040	24 VDC ∅∅
-	-

Piccole valvole / Small valves / Kis szelepek

PVC laboratorio / PVC lab
PVC labor



📖	Ø (mm)
R122353	1/4" x 1/4"
R122751	1/4" x 3/8"
-	-

PP-PE 2x sbavatura / PP-PE 2x hose barb
PP-PE 2x tömlőszár



📖	Ø (mm)
R074001	4
R074002	5-7
R074003	7-9
R074004	9-11
R074005	11-13

PP-PE 3x sbavatura / PP-PE 3x hose barb
PP-PE 3x tömlőszár



📖	Ø (mm)
-	-
R074102	5-7
R074103	7-9
R074104	9-11
R074105	11-13

PP-PE 2x sbavatura / PP-PE 2x hose barb
PP-PE 2x tömlőszár



📖	Ø (mm)
R074201	12
R074202	16
R074203	20
R074204	25
-	-

PP-PE sbav. x avvit. ♂ / PP-PE barb x thr. ♂
PP-PE tömlőszár x csav. ♂



📖	Ø (mm)
R074301	12 x 1/2"
R074302	12 x 3/4"
R074303	16 x 1/2"
...	...
R074308	25 x 3/4"

PP-PE sbav. x avvit. ♀ / PP-PE barb x thr. ♀
PP-PE tömlőszár x csav. ♀



📖	Ø (mm)
R074401	16 x 1/2"
R074402	16 x 3/4"
R074403	20 x 1/2"
...	...
R074406	25 x 3/4"

PP-PE avvit. ♂ x ♂ / PP-PE thr. ♂ x thr. ♂
PP-PE csav. ♂ x csav. ♂



📖	Ø (mm)
R074501	1/2"
R074502	3/4"
-	-

PP-PE avvit. ♀ x ♀ / PP-PE thr. ♀ x thr. ♀
PP-PE rosc. ♀ x csav. ♀



📖	Ø (mm)
R074601	1/2"
R074602	3/4"
-	-

PP-PE avvit. ♂ x ♀ / PP-PE thr. ♂ x thr. ♀
PP-PE csav. ♂ x csav. ♀



📖	Ø (mm)
R074701	1/2"
R074702	3/4"
-	-

Ottone - Acquario / Brass - Aquarium
Sárgaréz - Akvárium



📖	Ø (mm)
R074801	4 × 4
R074802	4-5 × M5
R074803	4 × 4 × 4
-	-

Ottone - Standard / Brass - Standard
Sárgaréz - standard



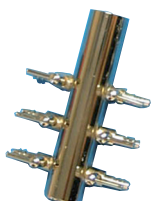
📖	Ø (mm)
R074901	1/8"
...	...
R074905	3/4"
R074921	1/8"
...	...
R074925	3/4"

Distributore (plastico) / Distributor (plastic)
Elosztó (műanyag)



📖	Ø (mm)
R075051	6×
R075052	8×
R075053	10×
...	...
R075056	20×

Distributore LP / Manifold LP
Elosztó LP



📖	DESCR.
R075101	2×
R075102	3×
R075103	4×
...	...
R075108	18×

(Ø 4 mm)

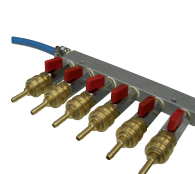
Distributore HP / Manifold HP
Elosztó HP



📖	DESCR.
R075201	2×
R075202	3×
R075203	4×
R075204	5×
-	-

(Ø 9 mm)

Distributore O₂ / O₂ Manifold
Elosztó O₂



📖	Ø (mm)
R075301	2×
R075302	3×
R075303	4×
...	...
R075307	8×

Valvole a galleggiante / Float valves / Úszószelepek

Ottone / Brass
Sárgaréz



📖	Ø (mm)
R076001	3/8"
R076002	1/2"
R076003	3/4"
...	...
R076007	2"

Plastico quick-stop / Plastic quick-stop
Műanyag quick-stop



📖	Ø (mm)
R076100	1/2"
R076101	3/4"
R076102	1"
R076103	1" 1/2"
-	-

Plastico auto-lock / Plastic auto-lock
Műanyag auto-lock



📖	Ø (mm)
R076201	1/2"
R076202	3/4"
R076203	1"
...	...
R076207	2" 1/2"

Valvole di ritegno & Filtri / Check valves & Strainers / Visszacsapó szelepek & Szűrők

S4 Oscillante / S4 Wafer
S4 Lengő csappantyú



📖	Ø (mm)
R270001	40
R270196	50
R270036	63
...	...
R270504	560

S4 Oscillante, a molle / S4 Wafer with spring
S4 Lengő csappantyú, rugóval



📖	Ø (mm)
R270003	40
R270198	50
R270037	63
...	...
R270117	315

K4 Oscillante indicatore / K4 Wafer, indicator
K4 Lengő csappantyú, indikátor



📖	Ø (mm)
R125804	75
R125805	90
R125806	110
...	...
R125809	280

K6 Oscillante, a molle / K6 Wafer with spring
K6 Lengő csappantyú, rugóval



📖	Ø (mm)
R129078	50
R129079	63
R129080	75
...	...
R129086	315

S4 Cono col. ♀ / S4 Cone solv. ♀
S4 Kúp rag. ♀



📖	Ø (mm)
R012501	16
R012502	20
R012503	25
...	...
R012510	110

S4 Cono avvit. ♀ / S4 Cone thr. ♀
S4 Kúp csav. ♀



📖	Ø
R121186	3/8"
R121188	1/2"
R121190	3/4"
...	...
R121202	3"

Oscillante, orizzontale / Wafer, horizontal
Lengő csappantyú, vízszintes



📖	Ø (mm)
R077601	32
R077602	40
R077603	50
-	-

S4 Pied col. ♀ / S4 Foot solv. ♀
S4 Pie rag. ♀



📖	Ø (mm)
R121323	16
R121329	20
R121335	25
...	...
R122389	110

S4 Pied avvit. ♀ / S4 Foot thr. ♀
S4 Pie csav. ♀



📖	Ø
R121321	3/8"
R121327	1/2"
R121333	3/4"
...	...
R121371	3"

🔗 Cono S4 disponibile anche in fusione PE / S4 cone also available as PE fusion / Az S4 kúp PE fúziós kivitelben is elérhető

Valvola Y col. ♀ / Y check valve solv. ♀
Y szelep rag. ♀



📖	Ø (mm)
R077701	16
R077702	20
R077703	25
...	...
R077710	110

Valvola Y avvit. ♂ / Y check valve thr. ♂
szelep Y csav. ♂



📖	Ø
R077801	3/4"
R077802	1"
R077803	1" 1/4
R077804	1" 1/2
R077805	2"

S4 ventilazione col. ♀ / S4 Aerating solv. ♀
S4 szellőztetés rag. ♀



📖	Ø (mm)
R121262	16
R121264	20
R121266	25
...	...
R122391	110

S4 ventilazione avvit. ♀
S4 Aerating thr. ♀
S4 szellőztetés csav. ♀



📖	Ø
R121280	3/8"
R121282	1/2"
R121284	3/4"
...	...
R121296	3"

Valvola di ritegno dell'aria (ventilatore)
Air check valve (blower)
Levegő visszacsapó szelep (fúvó)



📖	Ø
E009874	1"
E009875	1" 1/4
E009876	1" 1/2
...	...
E009879	4"

Valvola in acciaio inossidabile e PTFE
Stainless steel & PTFE check valve
Rozsdamentes acél és PTFE szelep



📖	Ø
R077101	1/4"
R077102	3/8"
R077103	1/2"
...	...
R077108	2"

Valvola acquario / Aquarium check valve
Akvárium visszacsapó szelep



📖	Ø (mm)
R077001	4
-	-

Filtro acciaio inoss. / St. steel strainer
Rozsdamentes acél szűrő



📖	Ø
R077301	3/8"
R077302	1/2"
R077303	3/4"
...	...
R077310	4"

Filtro PVC / PVC strainer
PVC szűrő



📖	Ø (mm)
R077501	20
R077502	25
R077503	32
...	...
R077509	110

🔗 Filtri di fondo: con o senza valvola di ritegno, tutti i materiali disponibili / Foot strainers : with or without check valve, all materials available /
Lábszűrők: visszacsapó szeleppel vagy anélkül, minden anyag elérhető

Filtri in linea / In-line filters / Sorok belüli szűrők

S4 plastico col. ♀ / S4 plastic solv. ♀
S4 műanyag rag. ♀



📖	Ø (mm)
R121701	16
R121702	20
R121703	25
...	...
R121710	110

S4 plastico avvit. ♀ / S4 plastic thr. ♀
S4 műanyag csav. ♀



📖	Ø (mm)
R121721	3/8"
R121722	1/2"
R121723	3/4"
...	...
R121758	3"

S4 metallo col. ♀ / S4 metal solv. ♀
S4 fém rag. ♀



📖	Ø (mm)
R124707	16
R124708	20
R124709	25
...	...
R124716	110

S4 metallo avvit. ♀ / S4 metal thr. ♀
S4 fém csav. ♀



📖	Ø (mm)
R124717	3/8"
R124718	1/2"
R124719	3/4"
...	...
R124725	3"

Inserire / Insert
Beszűrás



📖	■ (mm)
R250606	0,50
...	...
R250614	0,75
...	...
R250622	1,00

Filtro Y / Y-filter
Y Szűrő



📖	Ø (mm)
R078101	20
R078102	25
R078103	32
...	...
R078109	90

Filtro Y, trasparente / Y-filter, clear
Szűrő Y, átlátszó



📖	Ø (mm)
R078201	20
R078202	25
R078203	32
...	...
R078209	90

Inserire, plastico / Insert, plastic
Beszűrás, műanyag



📖	■ (mm)
R078301	0,5
R078321	0,8
R078341	1,4
R078361	2,2
...	...

Inserire, metallo / Insert, metal
Beszűrás, fém



📖	Ø (mm)
R078401	20
R078402	25
R078403	32
...	...
R078408	90

Miscelatori statici / Static mixers /
Statikus keverők

☞ pagina 50 / page 50 / 50. oldal

Misuratori di portata a galleggiante / Variable area flowmeters /
Úszó áramlásmérők

💡 Tutti i misuratori di portata M123, M335 e M350 sono disponibili con galleggiante magnetico come opzione
All flowmeters M123, M335 and M350 are available with magnetic float as an option
Opcióként minden M123, M335 és M350 áramlásmérő mágneses úszóval is kapható

M123 PSU / M123 PSU
M123 PSU



📖	Q (lph)
R273471	1,5-15
R273472	2,5-25
R273473	5-50
...	...
R273481	100-1000

M123 PVC / M123 PVC
M123 PVC



📖	Q (lph)
R274161	1,5-15
R274162	2,5-25
R274218	5-50
...	...
R274171	100-1000

M335 PA / M335 PA
M335 PA



📖	Q (lph)
R277084	50-500
R277085	100-1000
R277086	150-1500
...	...
R277096	8000-60000

M335 PSU / M335 PSU
M335 PSU



📖	Q (lph)
R277162	50-500
R277163	100-1000
R277164	150-1500
...	...
R277174	8000-60000

M335 PVC / M335 PVC
M335 PVC



📖	Q (lph)
R277240	50-500
R277241	100-1000
R277242	150-1500
...	...
R277252	8000-60000

M350 PA / M350 PA
M350 PA



📖	Q (lph)
R279700	50-500
R279701	100-1000
R279709	150-1500
...	...
R279712	8000-60000

M350 PSU / M350 PSU
M350 PSU



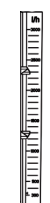
📖	Q (lph)
R279778	50-500
R279779	100-1000
R279780	150-1500
...	...
R279790	8000-60000

M350 PVC / M350 PVC
M350 PVC



📖	Q (lph)
R279856	50-500
R279857	100-1000
R279858	150-1500
...	...
R279868	8000-60000

Scala speciale / Special scale
Speciális skála



📖	Pair (bar)
R300201	0
R300202	1
R300203	2
...	...
R300204	8

Interruttori di soglia
Limit contacts
Küszöb kapcsolók



📖	DESCR.
R277287	min.
R277288	max.
-	-

Sensore di misurazione
Measuring sensor
Mérő érzékelő



📖	DESCR.
R277463	4-20 mA
-	-

Flussometro per analisi
Analysis flow tube meter
Elemző áramlásmérő



📖	Q (lpm)
R079101	0,006
...	...
R079150	62,1
R079201	0,019
...	...
R079245	62,6

Interruttore del sensore ottico
Optical sensor switch
Optikai érzékelő kapcsoló



📖	Ø (mm)
R079301	1× [65 mm]
R079302	1× [150 mm]
R079303	2× [150 mm]
-	-

Misuratori a tubi di flusso multipli
Multiple flow tube meters
Több áramlásmérő cső



📖	DESCR.
R079401	2×
R079402	3×
R079403	5×
R079404	5×
R079405	6×

Pitot
Pitot
Pitot



📖	Q (GPM)
R079601	5-35
R079602	9-50
R079603	10-70
...	...
R079609	300-2200

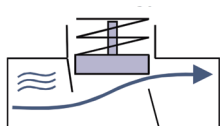
☞ Misuratori di flusso di ossigeno standard pagina 48 / Standard oxygen flowmeters page 48 / Szabványos oxigénáramlásmérők, 48. oldal
disponibili anche: misuratori con scatola indicatore (flusso elevato), misuratori target (orizzontali), AW-Lake (multiposizione e bidirezionale)
also available : flowmeters with indicator box (high flow), target flowmeters (horizontal), AW-Lake (multi-position & bi-directional)
Rendelhető még: áramlásmérők jelződobozzal (nagy áramlás), cél áramlásmérők (vízszintes), AW-Lake (több pozíciós és kétirányú)

**Flussostati & Flussometri / Flow switches & Flowmeters /
Áramláskapcsolók & áramlásmérők**

Valvola a pistone
Piston valve design
Dugattyús szelep kialakítás



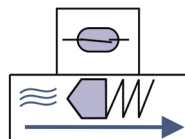
R080100



Pistone in linea
Piston inline design
Dugattyús belső kialakítás



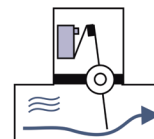
R080200



Pagaia - interruttore
Paddle - switch
Lapát - kapcsoló



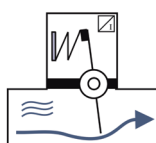
R080300



Pagaia - metro
Paddle - meter
Lapát - mérő



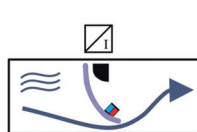
R080400



Lenbo dinamico
Dynamic flap
Dinamikus csappantyú



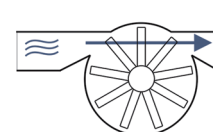
R080500



Rotore
Rotor
Forgórész



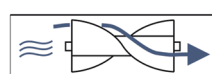
R080600



Turbina
Turbine
Turbina



R080700



Vite del mandrino
Spindle screw
Orsócsavar



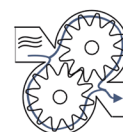
R080800



Ingranaggio
Gear wheel
Fogaskerék



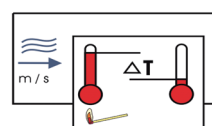
R080900



Calorimetrico
Calorimetric
Kalorimetriás



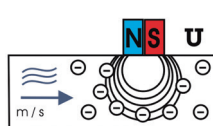
R081000



Induttivo magnetico
Magnetic inductive
Mágneses induktív



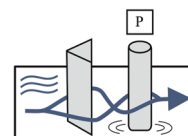
R081100



Vortice
Vortex
Örvény



R081200



Ultrasonico
Ultrasonic
Ultrahangos



R081300



Vetro spia
Sight glass
Kémlelő üveg



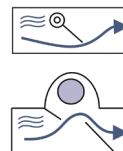
R081400



Indicatori di flusso a Pagaia & Sfera
Flap & Sphere flow indicators
Csappantyú & Gömb áramlásjelzők



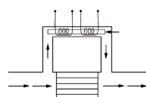
R081500



Misuratore di portata massico
Mass flowmeter
Tömegáramlásmérő



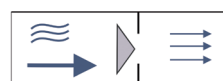
R081600



Limitatore dell'orifizio
Orifice limiter
Szorítónyílás-korlátozó



R081700



Dispositivo portatile, misuratore di corrente
Hand-held device, current-meter
Kézi készülék, árammérő



R081800

correntometro (idrologia) / current-meter (hydrology) / árammérő (hidrológia):
p. 160

**Interruttori & Sensori di livello / Level switches & sensors /
Szintkapcsolók & Szintérzékelők**

Pera SKW PVC / Pear SKW PVC
Körte SKW PVC



	ⓘ	∩ (m)
	R082501	3
	R082502	5
	R082503	10
	R082504	20
	-	-

Pera SSW NEO / Pear SSW NEO
Körte SSW NEO



	ⓘ	∩ (m)
	R082601	2
	R082602	5
	R082603	10
	R082604	20
	-	-

Pera SSWE NEO / Pear SSWE NEO
Körte SSWE NEO



	ⓘ	∩ (m)
	R082701	10
	R082702	20
	-	-

Interruttore galleggiante di sentina
Bilge float switch
Fenékvíz úszókapcsoló



	ⓘ	∩ (A)
	R082801	15
	-	-

Interruttore livello a galleggiante, verticale
Level float switch, vertical
Szint úszókapcsoló, függőleges



	ⓘ	∩ (mm)
	R082901	40
	R082902	250
	R082903	500
	R082904	750
	R082905	1000

Interruttore livello a galleggiante, orizzont.
Level float switch, horizontal
Szint úszókapcsoló, vízszintes



	ⓘ	DESCR.
	R083001	RWI
	R083002	L25-L26
	-	-

Interruttore di livello, a infrarossi
Level switch, infrared
Infravörös szintkapcsoló



	ⓘ	∩
	R083101	5V - T
	R083102	24V - T
	R083103	5V - N
	R083104	24V - N
	-	-

Fincorsa di livello conduttivo
Conductive level limit switch
Vezetőképes szinthatárkapcsoló



	ⓘ	∩ (mm)
	R083201	3× 150
	R083202	3× 1000
	-	-

Fincorsa del livello di vibrazione
Vibration level limit switch
Rezgészint határkapcsoló



	ⓘ	DESCR.
	R083301	V551
	-	-

Fincorsa di livello capacitivo
Capacitive level limit switch
Kapacitív szinthatár kapcsoló



	ⓘ	DESCR.
	R083401	rev.
	R083402	std.
	-	-

Microonde guidate
Guided wave radar level sensor
Írányított hullámú radar



	ⓘ	DESCR.
	R083590	IFM
	-	-

Sensore di pressione idrostatica
Hydrostatic pressure sensor
Hidrosztatikus nyomásérzékelő



	ⓘ	∩ (m)
	R083601	1,0
	R083602	2,5
	R083603	4,0

	R083613	250

Sensore ad ultrasuoni
Ultrasound sensor
Ultrahang érzékelő



	ⓘ	∩ (mm)
	R083701	LS20
	R083702	EL
	R083703	OMNI-L
	-	-

Sensore di livello a galleggiante
Float level sensor
Úszó szintérzékelő



	ⓘ	∩ (mm)
	R083801	250
	R083802	500
	R083803	750

	R083806	2000

Indicatore del contenuto idrostatico
Hydrostatic tank content gauge
Hidrosztatikus tartálytartalom mérő



	ⓘ	DESCR.
	R083901	☞
	R083902	⚡
	-	-

Sensore di livello capacitivo
Capacitive level sensor
Kapacitív szintérzékelő



	ⓘ	∩ (mm)
	R084001	500
	R084002	800
	R084003	1000

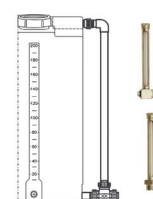
	R084006	2500

Sensore di livello calorimetrico
Calorimetric level sensor
Kalorimetriás szintérzékelő



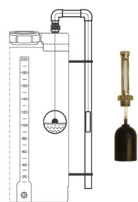
	ⓘ	∩ (mm)
	R084101	100
	R084102	150
	R084103	200
	-	-

Spia senza galleggiante
Sight glass without float
Nézőüveg úszó nélkül



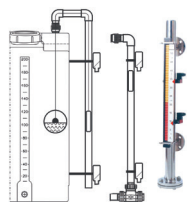
	ⓘ	DESCR.
	R084201	NO
	R084202	NA
	R084203	NB
	-	-

Spia con galleggiante
Sight glass with float
Nézőüveg úszóval



	Ø (mm)
R084301	N0S
R084302	NBS
-	-

Opzione contattore magnetico (scala)
Sight glass magnetic switch option
Mágneses kontaktor opció (skála)



	Ø (mm)
R084401	N0SC
R084402	NR-000
-	-

Indicatore di livello visivo
Visual level indicator
Vizuális szintjelző



	Ø (mm)
R084501	norm. ●
R084502	norm. ●
-	-

Serbatoi a pressione / Pressure tanks / Nyomástartó tartályok

Wellmate / Wellmate
Wellmate



	Vol. (l)
R085501	60
R085502	75
R085503	120
...	...
R085511	1000

GWS / GWS
GWS



	Vol. (l)
R085601	100
R085602	200
R085603	300
R085604	350
R085605	450

Aquasystem / Aquasystem
Aquasystem



	Vol. (l)
R085701	50
R085702	80
R085703	100
...	...
R085710	2000

Manometri, manometri, pressostati e sensori di pressione / Manometers, Pressure gauges, Pressure switches & sensors / Manométerek, nyomásmérők, nyomáskapcsolók és nyomásérzékelők

Lega di rame, secco / Copper alloy, dry
Rézötvetet, száraz



	P (bar)
R086101	0,6
R086102	1,0
R086103	1,6
...	...
R086116	400

Acciaio inoss., glicerina / St. steel, glycerine
Rozsdamentes acél, glicerin



	P (bar)
R086201	0,6
R086202	1,0
R086203	1,6
...	...
R086216	400

Ossigeno / Oxygen
Oxigén



	P (bar)
R086310	0,6
R086311	1,0

Bassa pressione / Low pressure
Alacsony nyomás



	P (mbar)
R086401	25
R086402	40
R086403	60
...	...
R086408	600

Differenziale / Differential
Differenciális



	P (bar)
R086501	0,06
R086502	1,0
R086503	1,6
...	...
R086517	100

Opzione contattore / Switch contact option
Kontaktor opció



	Type / Tipo
R086601	magn. 1
...	...
R086606	magn. 6
R086611	ind. 1
...	...

Separatore / Separator
Szétválasztó



	mat.
R086701	PVC
R086702	PP
R086703	PVDF
-	-

Pressostato / Pressure switch
Nyomáskapcsoló



	P (bar)
R086801	0,35 [1x]
R086802	0,35 [2x]
R086803	1,0 [1x]
...	...
R086822	500 [2x]

Trasmittore / Transmitter
Adó



	P (bar)
R086901	0,10
R086902	0,16
R086903	0,25
...	...
R086920	600

Sensore idrostatico della sonda del pozzo
Well probe hydrostatic sensor
Kútzsonda hidrosztatikus érzékelő



	P (bar)
R083601	0,10
R083602	0,25
R083603	0,40
...	...
R083613	25

Visualizzazione della pressione, stazionario
Pressure display, stationary
Nyomáskijelző, álló helyzetben



	P (bar)
R087001	OMNI-P
R087002	GIA2000
-	-

Display della pressione, dispositivo portatile
Pressure display, hand-held device
Nyomáskijelző, kézi készülék



	DESCR.
R087101	GMH3111
R087102	GMH3151
R087103	GMH3156
...	...
R087113	GMH3181

Tagliatubi & assemblaggio / Pipe cutter & Assembly / Csóvágó & Összeszerelés

Filo / Wire
Huzal



	Ø (mm)
R015611	140 (24")
R015612	500 (72")
-	-

Sega / Saw
Fűrész



	→ (mm)
R015621	300
R015622	400
-	-

Taglio / Shear
Nyírás



	Ø (mm)
R015631	26
R015632	40
R015633	63
-	-

Taglierino / Cutter
Vágó



	Ø (mm)
R015600	3 ... 33
R015601	6 ... 63
R015604	10 ... 90
...	...
R015606	150 ... 254

Ghigliottina / Guillotine
Guillotine



	Ø (mm)
R015641	125
R015642	225
R015643	350
-	-

Segmento / Segment
Szegmens



	Ø (mm)
R015661	160 ... 315
R015662	355 ... 500
R015663	355 ... 630
R015664	355 ... 800
-	-

Chiave per cinghia / Strap wrench
Szikkulcs



	Ø (mm)
R015711	10 ... 63
R015712	33 ... 127
R015713	60 ... 324
-	-

Cono di sbavatura / Deburring cone
Sorjázó kúp



	Ø (mm)
R015721	20 ... 40
R015722	20 ... 63
-	-

Smussatore / Beveler
Letőró gép



	Ø (mm)
R015731	50 ... 200
R015732	40 ... 300
-	-

Strumento di sbavatura / Deburring tool
Sorjázó szerszám



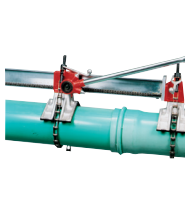
	DESCR.
R015741	4x
-	-

Morsa / Vise
Sátu



	Ø (mm)
R015751	10 ... 75
R015752	10 ... 114
R015753	10 ... 141
...	...
R015757	50 ... 500

Falegname / Joiner
Asztalos



	Ø (mm)
R015771	114 ... 434
-	-

Fusione, Saldatura, Ispezione & Pulizia / Fusion, Welding, Inspection & Cleaning / Fúzió, Hegesztés, Ellenőrzés & Tisztítás

Controller per elettrofusione
Electrofusion controller
Elektrofúziós vezérlő



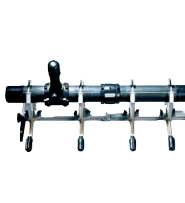
	DESCR.
R015801	Monomatic
R015802	Polymatic
-	-

Raschietto per tubi
Pipe scraper
Csókaparó



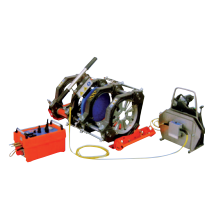
	Ø (mm)
R015811	63
R015821	50 ... 160
R015822	75 ... 315
R015823	355 ... 710
-	-

Strumento di allineamento tubi
Pipe aligner and clamping tool
Csőigazító és szorítószerszám



	Ø (mm)
R015801	20 ... 63
R015802	63 ... 160
R015803	32 ... 110
...	...
R015806	250 ... 630

Macchina per fusione testa a testa
Butt-fusion machine
Butt-fúziós gép



	Ø (mm)
R015901	63 ... 140
R015902	90 ... 280
-	-

Saldatore per estrusione
Extrusion welder
Extrudáló hegesztő



	DESCR.
R016001	RSB20
-	-

Macchina per la pulizia dei tubi & Camera
Pipe cleaning machine & Camera
Csőtisztító gép & Lamera



	DESCR.
R016080	♣
R016090	♣
-	-

Colla / Glue / Ragasztó

Colla / Glue
Ragasztó



	Vol. (ml)
R014700	100
R014701	250
R014751	500
R014801	1000
R014821	5000

Spogliarellista / Cleaner
Sztripper



	Vol. (ml)
R014951	500
R015001	1000
R015021	5000
-	-

Lubrificante / Lubricant
Kenőanyag



	Υ (g)
R015101	700
-	-

Colla ABS Air-Line / ABS Air-Line adhesive
ABS Air-Line ragasztó



	Vol. (mL)
R014851	500
-	-

Teflon / Teflon
Teflon



	↗ (mm)
R014601	12
R014602	15
R014603	19
-	-

Sigillatura / Sealing
Tömítés



	DESCR.
R014651	577
R014652	5331
-	-

Clips / Clips / Klipek

Tipo A / Type A
A típus



	Ø (mm)
R015401	16
R015402	20
R015403	25
R015404	32
-	-

Tipo B / Type B
B típus



	Ø (mm)
R015411	16-19
R015412	20-23
R015413	25-28
...	...
R015419	87-95

Tipo Cobra / Type Cobra
Cobra típus



	Ø (mm)
R015351	16
R015352	20
R015353	25
...	...
R0153263	160

Tipo D / Type D
D típus



	Ø (mm)
R015351	90
R015352	110
R015353	125
...	...
R015362	400

Tipo E / Type E
E típus



	Ø (mm)
R015431	40
R015432	50
R015433	63
...	...
R015439	160

Distanziatore (E & D) / Spacer (E & D)
Távtartó (E & D)



	Ø (mm)
R015460	32
...	...
R015463	63
R015481	16
...	...
R015483	160

**Anelli di serraggio / Clamping rings /
Szorítógyűrűk**

Morsetto singolo
Single bossed clamp
Egyfejű bilincs



	Ø (mm)
R411001	13-18
R411002	20-23
R411003	25-28
...	...
R411018	160-169

Morsetto con risvolto smorzato
Damped bossed clamp
Csillapított domború bilincs



	Ø (mm)
R411101	15-20
R411102	21-26
R411103	26-32
...	...
R411120	164-169

Vite a bullone
Bolt screw
Csavar



	dim.
R411201	M8 x 50
R411202	M8 x 60
R411203	M8 x 80
...	...
R411215	M12 x 80

Albero filettato / Threaded rod
Menetes tengely



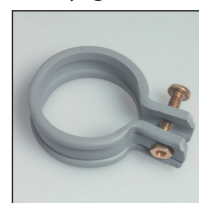
	dim.
R402801	M8 x 25
R402802	M8 x 30
R402803	M8 x 40
...	...
R402836	M16 x 2000

Morsetto gomma / Hose clamp with insert
Szorító gumival



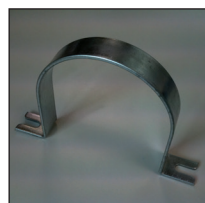
	Ø (mm)
R412001	6
R412002	8
R412003	10
...	...
R412012	45

Morsetto plastico / Plastic clamp
Műanyag bilincs



	Ø (mm)
R412101	32
R412102	40
R412103	50
...	...
R412111	160

Staffa in acciaio inox / Stirrup st. steel
Rozsdamentes kengyel



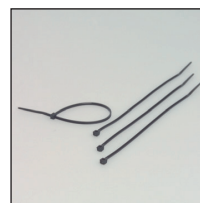
📖	Ø (mm)
R412201	75
R412202	90
R412203	110
...	...
R412209	250

Staffa in PVC / Stirrup PVC
PVC kengyel



📖	Ø (mm)
R412301	32
R412302	40
R412303	50
...	...
R412310	110

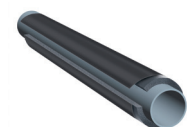
Fascetta / Cable strip
Kábelkötegelő



📖	↗ (mm)
R015501	96 x 2,5
R015502	165 x 2,5
R015503	203 x 2,5
...	...
R015521	730 x 12,7

Isolamento termico / Thermal insulation / Hőszigetelés

K-Flex AL-CLAD / K-Flex AL-CLAD
K-Flex AL-CLAD



📖	↔ x Ø (mm)
R410101	13 x 15
R410102	13 x 18
R410103	13 x 22
...	...
R410140	32 x 160

K-Flex EC / K-Flex EC
K-Flex EC



📖	↔ x Ø (mm)
R410201	9 x 6
R410202	9 x 8
R410203	9 x 10
...	...
R410308	32 x 170

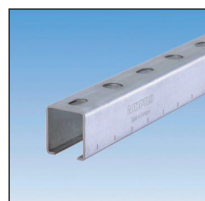
K-Flex STC / K-Flex STC
K-Flex STC



📖	↔ x Ø (mm)
R410401	13 x 42
R410402	13 x 48
R410403	13 x 54
...	...
R410426	19 x 160

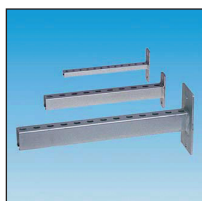
Rotaie MPC / MPC rails / MPC sínek

Sbarra / Support channel
Vasút



📖	dim. (mm)
R400101	27/18 (A)
R400102	28/30 (B)
R400103	38/40 (C)
R400104	40/60 (D)
-	-

Guida della consolle / Wall hanger bracket
Konzolsín



📖	→ (mm)
R400201	200 (A)
R400202	300 (A)
R400203	160 (B)
...	...
R400210	560 (D)

Supporto diagonale / Diagonal strut
Erős láb



📖	→ (mm)
R400301	440
-	-

Asola laterale staffa appendiabiti a muro
Wall hanger bracket lateral slot
Fali akasztó tartó oldalsó nyílás



📖	→ (mm)
R400401	600 (A)
R400402	400 (B)
R400403	240 (C)
R400404	480 (C)
-	-

Filettatura esterna chiusura rapida
Quick fastener external thread
Gyors rögzítő külső menet



📖	dim. (mm)
R400501	M8 x 7
R400502	M8 x 25
R400503	M8 x 45
...	...
R400511	M10 x 50

Filettatura interna chiusura rapida
Quick fastener internal thread
Gyors rögzítő belső menet



📖	dim.
R400601	M8 (A/B)
R400602	M10 (A/B)
R400603	M8 (C/D)
R400604	M10 (C/D)

Testa di martello / Hammer-head
Kalapácsfejű



📖	dim.
R400701	M8 x 7
R400702	M8 x 15
R400703	M8 x 25
...	...
R400715	M12 x 15

Bullone testa martello / Hammer-head bolt
Kalapácsfejű csavar



📖	dim.
R400801	M8 (C/D)
R400802	M10 (C/D)
R400803	M12 (C/D)
-	-

Dado della rotaia / Rail nut
Sín anya



📖	dim.
R400901	M8 (A/B)
R400902	M8 (C/D)
R400903	M10 (C/D)
R400904	M12 (C/D)
-	-

Staffa a morsetto / Clamp bracket
Szorító tartó



📖	dim.
R401001	M8 (A/B)
R401002	M10 (A/B)
R401003	M8 (C)
...	...
R401008	M12 (D)

Cappuccio protettivo / Protection cap
Védő sapka

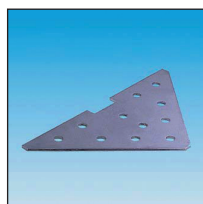


📖	dim.
R401101	A
R401102	B
R401103	C
R401104	D
-	-

Connettore del canale / Channel connector
Csatorna csatlakozó



📖	dim.
R401201	A/B
R401202	C/D
-	-

Rinforzo angolare / Reinforcement angle
Sarokerősítés


📖	dim.
R401301	C
-	-

Staffa supporto / Channel support bracket
Csatornatartó konzol


📖	DESCR.
R401401	T (A/B)
R401402	T (C/D)
R401403	L (A/B)
R401404	L (C/D)
-	-

Piastra ad U / Saddle support
Nyereg támasz


📖	DESCR.
R401501	T (A/B)
R401502	T (C/D)
R401503	L (A/B)
R401504	L (C/D)
-	-

Piastra ad U articol. / Vario saddle support
Csuklós U lemez


📖	dim.
R401601	C/D
-	-

Angolo di montaggio / Mounting angle
Szerelési szög


📖	▲
R401701	45° (A/B)
R401702	90° (A/B)
R401703	45° (C/D)
R401704	90° (C/D)
-	-

Incrociato / Cross channel connector
Keresztcsatornás csatlakozó

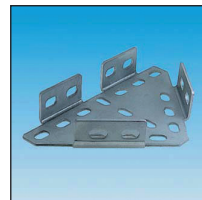

📖	dim.
R401801	B
R401802	C
R401803	D
-	-

Bitta per trave / Girder cleat
Tartógerenda


📖	dim.
R401901	M6 (A/B)
R401902	M10 (C/D)
-	-

Staffa a sbalzo / Cantilever bracket
Konzolidációs konzol

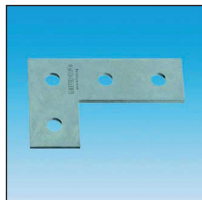

📖	dim. (mm)
R402001	200 × 4
-	-

Staffa di costruzione / Construction bracket
Építési konzol


📖	dim. (mm)
R402101	280 × 164
-	-

Angolo corto / Short mounting angle
Rövid rögzítési szög


📖	dim.
R402201	C/D
-	-

Piastra di collegamento / Connection plate
Csatlakozólemez


📖	DESCR.
R402301	L (C/D)
R402302	T (C/D)
-	-

Angolo laterale / Lateral angle
Oldalszög


📖	DESCR.
R402401	↗ (C/D)
R402402	↖ (C/D)
R402403	↗↖ (C/D)
-	-

Cerniera / Hinge
Zsanér


📖	DESCR.
R402501	Vario
-	-

Ammortizzatore / Resilient pad
Lengéscsillapító


📖	Ø (mm)
R402601	43 (M8-M10)
-	-

Rondella / Washer
Mosó


📖	Ø
R402701	M8/30
R402702	M10/35
-	-

Albero filettato / Threaded rod
Menetes tengely


📖	dim.
R402801	M8 × 25
R402802	M8 × 30
R402803	M8 × 40
...	...
R402836	M16 × 2000

Connettore rotondo / Round connector
Kerek csatlakozó


📖	dim.
R402901	M8 × 30
R402902	M8 × 40
R402903	M10 × 30
...	...
R402906	M16 × 40

Set di viti / Screw set
Csavarkészlet



📖	dim.
R403001	M8 × 20
R403002	M8 × 25
R403003	M8 × 30
...	...
R403027	M24 × 60

🔗 **Materiale acciaio zincato, acciaio inox AISI 304 o AISI 316 / Material galvanized steel, stainless steel AISI 304 or AISI 316**
Anyaga horganyzott acél, rozsdamentes acél AISI 304 vagy AISI 316

**Connettori 3D / 3D connectors /
3D csatlakozók**


Gomito / Elbow
Könyök



	dim. (mm)
R017803	30 × 30 × 2
std. : galv.	
opt. : AISI304	
opt. : M8/M10	


Gomito con scarico / Elbow with discharge
Könyök váladékozással



	dim. (mm)
R017804	30 × 30 × 2
std. : galv.	
opt. : AISI304	
opt. : M8/M10	


Pezzo a T / T-piece
T-darab



	dim. (mm)
R017805	30 × 30 × 2
std. : galv.	
opt. : AISI304	
opt. : M8/M10	


Pezzo a T c. scarico / T-piece with discharge
T-darab váladékozással



	dim. (mm)
R017806	30 × 30 × 2
std. : galv.	
opt. : AISI304	
opt. : M8/M10	


Attraverso / Cross
Kereszt



	dim. (mm)
R017807	30 × 30 × 2
std. : galv.	
opt. : AISI304	
opt. : M8/M10	


Attraverso c. scarico / Cross with discharge
Kereszt váladékozással



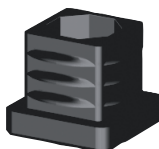
	dim. (mm)
R017808	30 × 30 × 2
std. : galv.	
opt. : AISI304	
opt. : M8/M10	


Stella / Star
Csillag



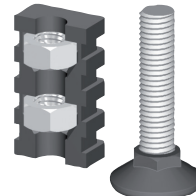
	dim. (mm)
R017809	30 × 30 × 2
std. : galv.	
opt. : AISI304	
opt. : M8/M10	


Mancia / Plug
Tipp



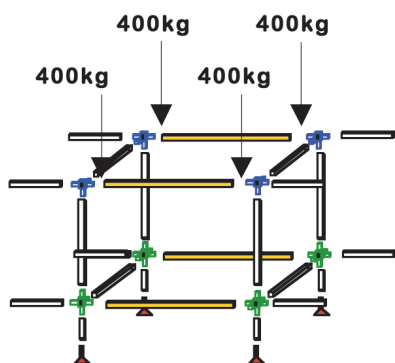
	dim. (mm)
R017810	30 × 30 × 2
std. : galv.	
opt. : AISI304	
opt. : M8/M10	

Piede / Leg
Láb

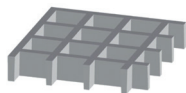


	dim. (mm)
R017811	30 × 30 × 2
std. : galv.	
opt. : AISI304	
opt. : M8/M10	

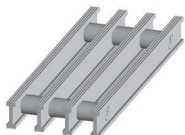
 R017801 : Tubo quadrato alluminio 30 × 30 × 2 mm / Square aluminium pipe 30 × 30 × 2 mm / Négyzet alakú alumínium cső 30 × 30 × 2 mm



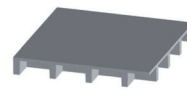
**Grigliati & Superfici Antiscivolo / Walkways & Anti-slip surfaces /
Rácsok & Csúszásgátló felületek**

 Griglia stampata / Moulded grating
 Öntött rács


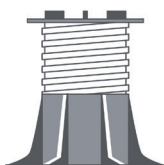
	↑ × (mm)
R404001	15 × 42
R404002	25 × 30
R404003	25 × 13
...	...
R404014	60 × 26

 Grigliato pultruso / Profile grating
 Pultrudált rács


	↑ × (mm)
R404101	30 × 14
R404102	30 × 20
R404103	30 × 30
...	...
R404106	60 × 30

 Pavimento di sicurezza / Safety flooring
 Biztonsági padló


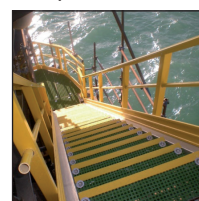
	↑ × (mm)
R404201	18 × 30
R404202	28 × 30
R404203	33 × 30
R404204	41 × 30
R404205	53 × 42

 Piedini in plastica / Plastic feet
 Műanyag lábak


	↑ (mm)
R404301	32-50
R404302	50-75
R404303	75-120
...	...
R40408	300-400

 Set di fissaggio / Fixing sets
 Rögzítő készletek


	DESCR.
R404401	TL
R404402	KU
R404403	DK
R404404	MK
-	-

 Sistemi completi / Complete systems
 Komplet rendszerek


	DESCR.
R404501	①
-	-

 3M Safety-Walk B2
 (Universal)


	→ (mm)
R404601	25 ●
R404602	50 ●●
R404604	100 ●●
...	...
R404609	914 ●

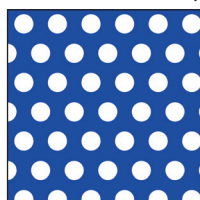
 3M Safety-Walk Coarse
 (Extra)


	→ (mm)
R404701	150 ●
R404702	610 ●
R404703	914 ●
-	-

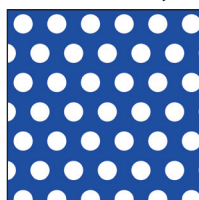
 3M Safety-Walk Comfortable
 (Flexible)


	→ (mm)
R404801	50 ●
R404802	100 ●
R404803	150 ●
-	-

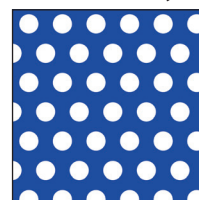
**Lamiere perforate / Perforated sheets /
Perforált lapok**

 Allu., fori rotondi / Alu., round holes
 Alumínium, kerek lyukak


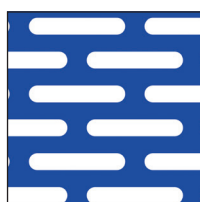
	■ (mm)
R018099	RT 0,6 - 1,25
R018100	RT 1,0 - 2,0
R018101	RT 1,5 - 2,5
...	...
R018145	RT 30 - 40

 AISI 304, fori rotondi / AISI 304, round holes
 AISI 304, kerek lyukak


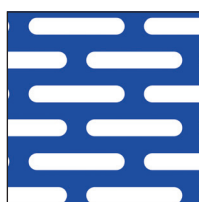
	■ (mm)
R018001	RT 0,6 - 1,25
R018002	RT 0,75 - 1,5
R018003	RT 1,0 - 2,0
...	...
R018077	RT 20 - 30

 AISI 316, fori rotondi / AISI 316, round holes
 AISI 316, kerek lyukak


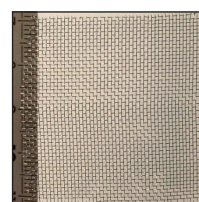
	■ (mm)
R018151	RT 1,25 - 2,5
R018152	RT 2,0 - 3,0
R018163	RT 2,0 - 3,5
...	...
R018173	RT 10 - 15

 Allu., fori oblunghi / Alu., slotted holes
 Alumínium, hosszúkás lyukak


	■ (mm)
R018301	2 × 20
R018302	3 × 20
R018303	5 × 20
R018304	5 × 25
-	-

 AISI 304, f. oblunghi / AISI 304, slotted holes
 AISI 304, hosszúkás lyukak


	■ (mm)
R018201	5 × 20
-	-

 Rete metallica / Wire cloth
 Drótháló


☞ p. 100 (M110000)
griglie speciali / special grids / speciális rácsok: ☞ p. 84

**Guarnizione in gomma / Rubber seal /
Gumi tömítés**

 rettangolare / square
 négyzetes


	→ × ↑ (mm)
R018401	2 × 10
R018402	2 × 20
R018403	3 × 10
...	...
R018411	10 × 50

 rettangolare, adesivo / square, adhesive
 négyzetes, ragasztóanyag


	→ × ↑ (mm)
R018503	2 × 10
R018504	2 × 20
R018507	3 × 10
...	...
R018511	10 × 50

 girare / round
 kerek


	Ø (mm)
R018701	2
R018702	3
R018703	4
...	...
R018713	50

**Spina di protezione del motore & Cavo elettrico / Motor protection plug & Electric cable /
Motorvédő dugó & Elektromos kábel**

VSL / VSL
VSL



📖	Ø (mm ²)
R405501	2× 0,75
-	-

PUR / PUR
PUR



📖	Ø (mm ²)
R405601	2× 0,75
R405602	2× 1,0
R405603	3× 1,0
R405604	2× 1,5
R405605	3× 1,5

NYM / NYM
NYM



📖	Ø (mm ²)
R405701	3× 1,5
R405702	5× 1,5
R405703	3× 2,5
R405704	5× 2,5
-	-

H05RR-F / H05RR-F
H05RR-F



📖	Ø (mm ²)
R405801	2× 1,0
R405802	3× 1,0
R405803	2× 1,5
...	...
R405807	5× 2,5

H07RN-F / H07RN-F
H07RN-F



📖	Vol. (l)
E009198	2× 1,0
E009199	3× 1,0
E009200	2× 1,5
...	...
E009501	5× 2,5

Connettore IP65 / Connector IP65
IP65 csatlakozó



📖	Ø (mm)
D014610	3 ... 10
-	-

Spine Schuko
Schuko plugs
Schuko dugók



📖	DESCR.
R406001	♂
R406002	♀
-	-

Spine CEE
CEE plugs
CEE dugók



📖	Ø (mm)
R406101	♂
R406102	♀
-	-

Spina di protezione termica 230 V
Motor protection plug 230 V
Hővédő dugó 230 V



📖	I (A)
E007600	1,0
E007700	1,5
E007701	2,0
...	...
E007710	16,0

Spina di protezione termica 400 V
Motor protection plug 400 V
Hővédő dugó 400 V



📖	I (A)
E007800	0,6 - 1,0
E007900	1,0 - 1,6
E008000	1,6 - 2,5
...	...
E008400	10,0 - 16,0

Spina protez. termica 400 V, inv. fase
Motor protection plug 400 V, phase check
Hővédő dugó 400 V, fázisinverzió



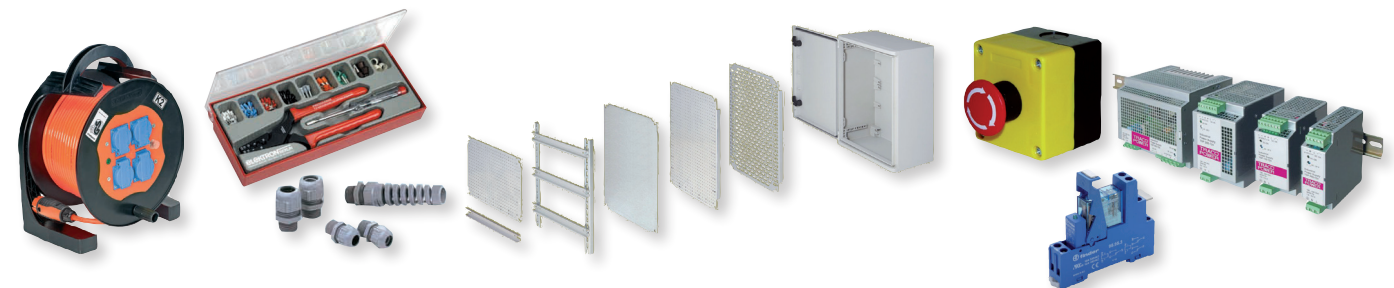
📖	I (A)
E008500	0,6 - 1,0
E008600	1,0 - 1,6
E008700	1,6 - 2,5
...	...
E009100	10,0 - 16,0

Protezione termica 400 V, senza spina
Motor protection plug 400 V, w/o connector
Hővédelem 400 V, dugó nélkül



📖	I (A)
E009130	0,6 - 1,0
E009140	1,0 - 1,6
E009150	1,6 - 2,5
...	...
E009190	10,0 - 16,0

*altre apparecchiature elettriche disponibili su richiesta / other electric equipment available on request /
kérsre egyéb elektromos berendezés is elérhető:*



idraulica, elettrica e utensili su richiesta / hydraulics, electrics and tools on request / hidraulika, elektromosság és szerszámok kérésre:

ACE

airtec

AVENTICS

BOSCH
Power for life

CEJN

CE

Continental
Gates

EMERSON

FAG

FESTO

fischer
TECHNOLOGIE SYSTEM

GARDENA

GEDORE

Henkel

HYDAC

IDEAL

KNIPEX

LOCTITE

NORGREN

NORMA

OKS

Parker

>Power Team

Rexroth
Bosch Group

SKF

SMC

tesa

WIKAI