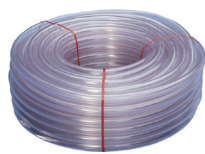


Tuyaux / Hoses / Schläuche

Tuyau PVC / PVC hose
PVC Schlauch



	Ø (mm)
R001201	4 / 6
R001202	5 / 8
R001203	6 / 9
...	...
R001241	60 / 70

Tuyau PVC renforcé / PVC fabric-hose
PVC Gewebeschnlauch



	Ø (mm)
R001101	6 / 12
R001102	8 / 14
R001103	9 / 15
...	...
R001116	50 / 64

Tuyau PVC Torsino / Torsino PVC hose
PVC Torsino Schlauch



	Ø
R001301	½ "
R001311	⅝ "
R001304	¾ "
...	...
R001310	2 "

Tuyau silicone / Silicone hose
Silikon Schlauch



	Ø (mm)
R001274	4 / 7
R001275	5 / 8
R001276	6 / 10
...	...
R001287	25 / 33

Tuyau PU / PU hose
PU Schlauch



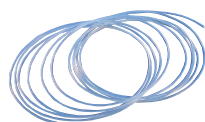
	Ø (mm)
R001290	4 / 6
R001291	5 / 8
R001292	6,5 / 10
...	...
R001294	11 / 16

Tuyau oxygène / Oxygen hose
Schlauch für Sauerstoff



	Ø (mm)
R002302	6 / 13
R002303	6 / 16
R002304	9 / 16
-	-

Tuyau PTFE-PFA / PTFE-PFA hose
PTFE-PFA Schlauch



	Ø (mm)
F005267	3 / 5
F005268	4 / 6
F005269	5 / 8
...	...
F005276	12 / 14

Tuyau spirale Luisiana / Luisiana spiral hose
Luisiana Spiralschlauch



	Ø (mm)
R001320	20 / 26,2
R001321	25 / 31,6
R001322	30 / 37,0
...	...
R001343	200 / 218,2

Tuyau spirale Oregon / Oregon spiral hose
Oregon Spiralschlauch



	Ø (mm)
R001360	20
R001361	25
R001362	30
...	...
R001386	300

Tuyau spirale Arizona SE
Arizona SE spiral hose
Arizona SE Spiralschlauch



	Ø (mm)
R001421	25 / 33,8
R001422	32 / 40,8
R001423	38 / 46,8
...	...
R001444	200 / 226

Tuyau spirale Shark
Shark spiral hose
Shark Spiralschlauch



	Ø (mm)
R001461	102 / 122
R001462	127 / 149
R001463	152 / 175
...	...
R001467	355 / 395

Tuyau spirale caoutchouc haute résistance
Heavy-duty rubber spiral hose
Resistent Spiralgummischlauch



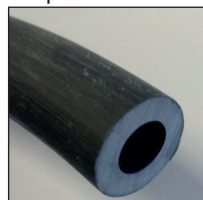
	Ø (mm)
R001521	19 / 29
R001522	25 / 35
R001523	32 / 42
...	...
R001541	202 / 227

Tuyau spirale Vacupress Cristal & SE
Vacupress cristal spiral hose & SE
Vacupress cristal & SE Spiralschlauch



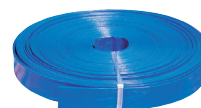
	Ø (mm)
R001561	19 / 28,0
...	...
R001578	151 / 171
R001611	19 / 28,0
...	...
R001630	151 / 171

Tuyau lesté Limpet
Limpet self-sink hose
Limpet Auflastschlauch



	Ø (mm)
R001904	4
R001908	8
R001910	10
R001912	12
R001919	19

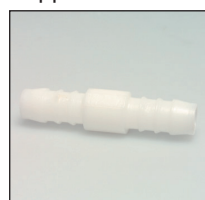
Tuyau plat
Flat hose
Flacher Schlauch



	Ø (mm)
R001500	25
R001501	32
R001502	40
...	...
R001508	207

Raccords PA - POM / PA - POM fittings / PA - POM Kupplungen

Droit cannelé / Double hose barb
Doppeltülle



	Ø (mm)
R030101	3
R030102	4
R030103	5
...	...
R030112	25

Droit réduit / Double hose barb reduced
Doppeltülle reduziert



	Ø (mm)
R030201	4 × 3
R030202	6 × 4
R030203	8 × 4
...	...
R030208	12 × 10

Té / T-piece
T-Stück



	Ø (mm)
R030301	3
R030302	4
R030303	5
...	...
R030314	25

Té réduit / T-piece reduced
T-Stück reduziert



📖	Ø (mm)
R030401	3 × 4 × 3
R030402	4 × 6 × 4
R030403	6 × 4 × 6
...	...
R030416	18 × 15 × 18

Coude / Elbow
Winkel



📖	Ø (mm)
R030501	3
R030502	4
R030503	5
...	...
R030513	25

Raccord Y / Y-piece
Y-Stück



📖	Ø (mm)
R030601	3
R030602	4
R030603	5
...	...
R030612	19

Raccord Y réduit / Y-piece reduced
Y-Stück reduziert



📖	Ø (mm)
R030701	4 × 6 × 4
R030702	6 × 8 × 6
-	-

Croix / Cross
Kreuz



📖	Ø (mm)
R030801	4
R030802	5
R030803	6
R030804	12
-	-

Cannelé × Filet ♂ / Hose barb × ♂ thread
Tülle × Gewinde ♂



📖	Ø (mm)
R030901	4 × 1/8"
R030902	4 × 1/4"
R030903	5 × 1/4"
...	...
R030943	60 × 2"

Té Cannelé × Filet ♂
T-piece Hose barb × ♂ thread
T-Stück Tülle × Gewinde ♂



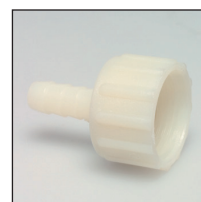
📖	Ø (mm)
R031001	4 × 1/8"
R031002	6 × 1/8"
R031003	6 × 1/4"
R031004	8 × 1/4"
R031005	10 × 3/8"

Coude Cannelé × Filet ♂
Elbow Hose barb × ♂ thread
Winkel Tülle × Gewinde ♂



📖	Ø (mm)
R031101	4 × 1/8"
R031102	4 × 1/4"
R031103	6 × 1/8"
...	...
R031115	25 × 1"

Cannelé × Filet ♀
Hose barb × ♀ thread
Tülle × Gewinde ♀



📖	Ø (mm)
R031201	1/4" × 7
R031202	3/8" × 9
R031203	3/8" × 9
...	...
R0321219	2" × 50

Coude Cannelé × Filet ♀
Elbow Hose barb × ♀ thread
Winkel Tülle × Gewinde ♀



📖	Ø (mm)
R031301	1/2" × 12
R031302	3/4" × 12
R031303	3/4" × 12
...	...
R031311	2" × 60

Coude Filet ♂ × Filet ♂
Elbow ♂ thread × ♂ thread
Winkel Gewinde ♂ × Gewinde ♂



📖	Ø
R031401	3/4"
R031402	1"
R031403	1" 1/4
-	-

Coude Cannelé × Filet ♂
Elbow Hose barb × ♂ thread
Winkel Tülle × Gewinde ♂



📖	Ø (mm)
R031501	3/8" × 12
R031502	1/2" × 12
R031503	1/2" × 16
...	...
R031511	1" 1/2 × 40

Union Cannelée
Union Hose barb
Verschraubung Tülle



📖	Ø (mm)
R031601	13
R031602	16
R031603	20
...	...
R031609	60

Union Cannelée × Filet ♂
Union Hose barb × ♂ thread
Verschraubung Tülle × Gewinde ♂



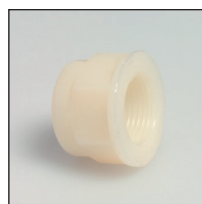
📖	Ø (mm)
R031701	3/4" × 16
R031702	3/4" × 20
R031703	1" × 20
...	...
R031718	2" × 60

Bouchon filet ♂
Cap ♂ thread
Kappe Gewinde ♂



📖	Ø
R031801	1/8"
R031802	1/4"
R031803	3/8"
...	...
R031806	1"

Bouchon filet ♀
Cap ♀ thread
Kappe Gewinde ♀



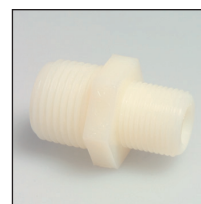
📖	Ø
R031901	1/2"
R031902	3/4"
R031903	1"
-	-

Mamelon Filet ♂ × Filet ♂
Nipple ♂ thread × ♂ thread
Doppelnippel Gewinde ♂ × Gewinde ♂



📖	Ø
R032001	3/8"
R032002	1/2"
R032003	3/4"
...	...
R032007	2"

Mamelon réduit Filet ♂ × Filet ♂
Reduced nipple ♂ thread × ♂ thread
Doppelnippel red. Gewinde ♂ × Gewinde ♂



📖	Ø (mm)
R032101	1/2" × 3/8"
R032102	3/4" × 1/2"
R032103	1" × 3/4"
...	...
R032107	2" × 1" 1/2

également disponible : raccords Super Speedfit / also available : Super Speedfit fittings / auch erhältlich : Kupplungen Super Speedfit

Raccords rapides air comprimé / Compressed air quick-couplings
Schnellsteck-Druckluftarmaturen

Base cannelée / Hose barb base
Kupplung Tülle



📖	Ø (mm)
R003401	6
R003402	8
R003403	9
R003404	10
R003405	13

Base Filet ♀ / ♀ thread base
Kupplung Gewinde ♀



📖	Ø
R003501	¼"
R003502	⅜"
R003503	½"
-	-

Base Filet ♂ / ♂ thread base
Kupplung Gewinde ♂



📖	Ø
R003601	¼"
R003602	⅜"
R003603	½"
-	-

Cannelure / Hose barb nozzle
Stecktülle



📖	Ø (mm)
R003901	6
R003902	8
R003903	9
R003904	10
R003905	13

Filetage ♀ / ♀ thread nipple
Steckgewinde ♀



📖	Ø
R004101	¼"
R004102	⅜"
R004103	½"
-	-

Filetage ♂ / ♂ thread nipple
Steckgewinde ♂



📖	Ø
R004001	¼"
R004002	⅜"
R004003	½"
-	-

Raccords LOK / LOK fittings / LOK Kupplungen

Union / Union
Verschraubung



📖	Ø (mm)
R032201	2
R032202	3
R032203	4
...	...
R032219	50

Réducteur union / Reducing union
Verschraubung reduziert



📖	Ø (mm)
R032301	3 × 2
R032302	6 × 2
R032303	6 × 3
...	...
R032324	38 × 30

Passage de cloison union / Bulkhead union
Verschraubung Durchführungen



📖	Ø (mm)
R032401	3
R032402	4
R032403	6
...	...
R032415	38

Passage de cloison union réductrice
Bulkhead reducing union
Verschraubung reduziert Durchführungen



📖	Ø (mm)
R032501	6 × ⅛"
-	-

Connecteur ♂
♂ connector
Kupplung ♂



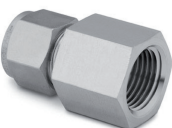
📖	Ø (mm)
R032601	2 × ⅛"
R032602	3 × ⅛"
R032603	3 × ¼"
...	...
R032644	38 × 1" ½

Passage de cloison ♂
Bulkhead ♂ connector
Durchführungen ♂



📖	Ø (mm)
R032701	6 × ⅛"
R032702	6 × ¼"
R032703	12 × ½"
-	-

Connecteur ♀
♀ connector
Kupplung ♀



📖	Ø (mm)
R032801	3 × ⅛"
R032802	3 × ¼"
R032803	4 × ⅛"
...	...
R032825	25 × 1"

Passage de cloison ♀
Bulkhead ♀ connector
Durchführungen ♀



📖	Ø (mm)
R032901	6 × ¼"
R032902	12 × ½"
-	-

Capuchon
Cap
Kappe



📖	Ø (mm)
R033001	2
R033002	3
R033003	4
...	...
R033018	38

Coude union / Union elbow
Verschraubung Winkel



📖	Ø (mm)
R033101	3
R033102	4
R033103	6
...	...
R033118	50

Coude ♂ / ♂ elbow
Winkel ♂



📖	Ø (mm)
R033201	3 × ⅛"
R033202	3 × ¼"
R033203	4 × ⅛"
...	...
R033235	38 × 1" ½

Coude ♀ / ♀ elbow
Winkel ♀



📖	Ø (mm)
R033301	6 × ⅛"
R033302	6 × ¼"
R033303	6 × ½"
...	...
R033309	16 × ½"

Coude σ 45° / 45° σ elbow
Winkel σ de 45°



	Ø (imp.)
R033401	1/4" x 1/8"
R033402	1/4" x 1/4"
R033403	3/8" x 1/8"
...	...
R0334	1" x 1"

Té union / Union Tee
Verschraubung T-stück



	Ø (mm)
R033501	2
R033502	3
R033503	4
...	...
R033519	50

Té union réducteur / Reducing union Tee
Verschraubung T-stück reduziert



	Ø (mm)
R033601	3 x 6
R033602	8 x 6
R033603	10 x 6
...	...
R033609	25 x 15

Té σ à embranchement / σ branch Tee
T-Stück σ seitlich



	Ø (mm)
R033701	6 x 1/8"
R033702	6 x 1/4"
R033703	8 x 1/8"
...	...
R033709	16 x 1/2"

Té passage σ / σ run Tee
T-Stück σ Gerade



	Ø (mm)
R033801	6 x 1/8"
R033802	6 x 1/4"
R033803	8 x 1/4"
...	...
R033806	16 x 1/2"

Té passage \varnothing / \varnothing run Tee
T-Stück \varnothing Gerade



	Ø (mm)
R033901	6 x 1/8"
R033902	6 x 1/4"
R033903	8 x 1/8"
...	...
R033909	16 x 1/2"

Té \varnothing à embranchement / \varnothing branch Tee
T-Stück \varnothing seitlich



	Ø (mm)
R034001	6 x 1/8"
R034002	6 x 1/4"
R034003	8 x 1/8"
...	...
R034009	16 x 1/2"

Croix union / Union cross
Kreuz



	Ø (mm)
R034101	3
R034102	6
R034103	8
...	...
R034110	25

Douille / Tubing insert
Tülle



	Ø (mm)
R034201	6 x 4
R034202	8 x 6
R034203	10 x 8
R034204	12 x 8
R034205	12 x 10

Raccord pour flexible
Hose connector
Tülle für Schlauch



	Ø (imp.)
R034301	1/8" x 1/8"
R034302	1/4" x 1/8"
R034303	1/4" x 1/4"
...	...
R034306	1/2" x 1/2"

Raccord σ pour flexible
 σ hose connector
Tülle σ für Schlauch



	Ø (mm)
R034401	4 x 1/8"
R034402	6 x 1/8"
R034403	8 x 1/8"
...	...
R034433	50 x 2"

Raccord \varnothing pour flexible
 \varnothing hose connector
Tülle \varnothing für Schlauch



	Ø (mm)
R034501	6 x 1/8"
R034502	9 x 1/8"
R034503	6 x 1/4"
...	...
R034520	38 x 2"

Raccord avec écrou \varnothing pour flexible
Hose connector, with \varnothing nut
Kupplung mit Radmutter \varnothing für Schlauch



	Ø (mm)
R034601	4 x 1/8"
R034602	6 x 1/8"
R034603	4 x 1/4"
...	...
R034615	25 x 1"

Olive cannelée, double
Hose nozzle, double
Doppeltülle



	Ø (mm)
R034701	6
R034702	9
R034703	13
...	...
R034716	107

Mamelon σ court
Close σ nipple
Doppelnippel σ kurz



	Ø
R034801	1/8"
R034802	1/4"
R034803	3/8"
...	...
R034806	1"

Mamelon σ 6 pans
Hex σ nipple
Doppelnippel σ 6-kant



	Ø
R034901	1/16"
R034902	1/8"
R034903	1/4"
...	...
R034909	2"

Mamelon σ 6 pans, mixte
Hex σ nipple, mixed
Mischdoppelnippel σ 6-kant



	Ø
R035001	1/8"
R035002	1/4"
R035003	3/8"
...	...
R035006	1"

Mamelon σ réducteur 6 pans
Hex reducing σ nipple
Doppelnippel σ 6-kant réduit



	Ø
R035101	1/8" x 1/16"
R035102	1/4" x 1/8"
R035103	3/8" x 1/8"
...	...
R035112	1" x 3/4"

Adaptateur ♀ × ♂
Adapter ♀ × ♂
Adapter ♀ × ♂



📖	Ø (mm)
R035201	1/8"
R035202	1/4"
R035203	3/8"
...	...
R035206	1"

Adaptateur ♀ × ♂, mixte
Adapter ♀ × ♂, mixed
Mischadapter ♀ × ♂



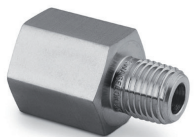
📖	Ø (mm)
R035301	1/8"
R035302	1/4"
R035303	3/8"
...	...
R035306	1"

Adaptateur ♂ × ♀, mixte
Adapter ♂ × ♀, mixed
Mischadapter ♂ × ♀



📖	Ø (mm)
R035401	1/4"
R035402	3/8"
R035403	1/2"
-	-

Adaptateur réducteur ♀ × ♂
Reducing adapter ♀ × ♂
Adapter reduziert ♀ × ♂



📖	Ø (mm)
R035501	1/8" × 1/16"
R035502	1/4" × 1/8"
R035503	3/8" × 1/8"
...	...
R035513	1" × 3/4"

Manchon réducteur ♂ × ♀
Reducing bushing ♂ × ♀
Muffe reduziert ♂ × ♀



📖	Ø (mm)
R035601	1/8" × 1/16"
R035602	1/4" × 1/8"
R035603	3/8" × 1/8"
...	...
R035614	1" × 3/4"

Accouplement ♀ 6 pans
♀ hex coupling
Muffe ♀ 6-kant



📖	Ø (mm)
R035701	1/8"
R035702	1/4"
R035703	3/8"
...	...
R035706	1"

Accouplement réducteur ♀ 6 pans
♀ hex reducing coupling
Muffe reduziert ♀ 6-kant



📖	Ø (mm)
R035801	1/4" × 1/8"
R035802	3/8" × 1/4"
R035803	1/2" × 1/8"
...	...
R035809	1" × 3/4"

Coude ♀ × ♀
♀ × ♀ elbow
Winkel ♀ × ♀



📖	Ø (mm)
R035901	1/8"
R035902	1/4"
R035903	3/8"
...	...
R035906	1"

Coude ♂ × ♂
♂ × ♂ elbow
Winkel ♂ × ♂



📖	Ø (mm)
R036001	1/8"
R036002	1/4"
R036003	3/8"
...	...
R036006	1"

Coude ♀ × ♂
♀ × ♂ elbow
Winkel ♀ × ♂



📖	Ø (mm)
R036101	1/8"
R036102	1/4"
R036103	3/8"
...	...
R036106	1"

Coude ♀ × ♂ réducteur
♀ × ♂ reducing street elbow
Winkel ♀ × ♂ réduit



📖	Ø (mm)
R036201	1/8"
R036202	1/4"
R036203	3/8"
...	...
R036206	1"

Té ♀
♀ Tee
T-Stück ♀



📖	Ø (mm)
R036301	1/8"
R036302	1/4"
R036303	3/8"
...	...
R036306	1"

Té ♂
♂ Tee
T-Stück ♂



📖	Ø (mm)
R036401	1/8"
R036402	1/4"
R036403	3/8"
...	...
R036306	1"

Té à embranchement ♀ × ♀ × ♂
♀ × ♀ × ♂ branch Tee
T-Stück seitlich ♀ × ♀ × ♂



📖	Ø (mm)
R036501	1/8"
R036502	1/4"
R036503	3/8"
R036504	1/2"
-	-

Té à embranchement ♀ × ♂ × ♀
♀ × ♂ × ♀ street Tee
T-Stück Gerade ♀ × ♂ × ♀



📖	Ø (mm)
R036601	1/8"
R036602	1/4"
R036603	3/8"
R036604	1/2"
R036605	3/4"

Croix ♀ / ♀ cross
Kreuz ♀



📖	Ø (mm)
R036701	1/8"
R036702	1/4"
R036703	3/8"
...	...
R036706	1"

Bouchon ♀ / ♀ cap
Kappe ♀



📖	Ø (mm)
R036801	1/8"
R036802	1/4"
R036803	3/8"
...	...
R036806	1"

Bouchon ♂ / ♂ plug
Kappe ♂



📖	Ø (mm)
R036901	1/8"
R036902	1/4"
R036903	3/8"
...	...
R036906	1"

Raccords symétriques Guillemin / Guillemin symmetric couplings / Guillemin symmetrische Kupplungen

Cannelé / Hose barb
Tülle



📖	Ø (mm)
R900501	30
R900502	35
R900503	40
...	...
R900511	110

Raccord ♀ / ♀ coupling
Kupplung ♀



📖	Ø
R900301	1"
R900302	1" ¼
R900303	1" ½
...	...
R900307	4"

♀ avec verrou / ♀ with lock
♀ mit Sperre



📖	Ø
R900401	1"
R900402	1" ¼
R900403	1" ½
...	...
R900407	4"

Raccord ♂ / ♂ coupling
Kupplung ♂



📖	Ø
R900101	1"
R900102	1" ¼
R900103	1" ½
...	...
R900107	4"

♂ avec verrou / ♂ with lock
♂ mit Sperre



📖	Ø
R900201	1"
R900202	1" ¼
R900203	1" ½
...	...
R900207	4"

Bouchon / Lid
Kappe



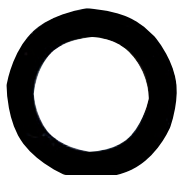
📖	DN
R900601	25
R900602	32
R900603	40
...	...
R900607	100

Raccord double / Double coupling
Doppelkupplung



📖	DN
R900901	40/25
R900902	40/32
R900903	50/32
...	...
R900912	100/80

Joint / Seal
Dichtung



📖	DN
R900701	25
R900702	32
R900703	40
...	...
R900707	100

Clé tricoise / Wrench spanner
Schlüssel



📖	DN
R900801	25 ... 65
R900802	55 ... 110
-	-

Raccords Storz / Storz couplings / Storz Kupplungen

Cannelé / Hose barb
Tülle



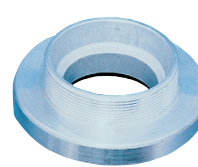
📖	Ø (mm)
R002402	C/52 × 25
R002403	C/52 × 32
R002404	C/52 × 38
...	...
R002407	B/75 × 75

Raccord ♀ / ♀ coupling
Kupplung ♀



📖	Ø (mm)
R002501	D/25 × 1"
R002502	C/52 × 1"
R002503	C/52 × 1" ¼
...	...
R002507	B/75 × 3"

Raccord ♂ / ♂ coupling
Kupplung ♂



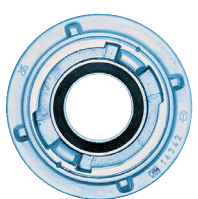
📖	Ø (mm)
R002602	C/52 × 1"
R002603	C/52 × 1" ¼
R002604	C/52 × 1" ½
R002605	C/52 × 2"
-	-

Bouchon / Lid
Kappe



📖	Ø (mm)
R002702	C/52
R002703	B/75
-	-

Réduction / Reducer
Reduktion



📖	Ø (mm)
R002801	C × Geka
R002802	C × D
R002803	B × C
R002804	A × B
-	-

Clé tricoise / Wrench spanner
Schlüssel



📖	Ø (mm)
R002902	A/B/C
-	-

Raccords Kardan - Perrot / Kardan - Perrot couplings / Kardan - Perrot Kupplungen

Cannelé ♂ / Hose barb ♂
Tülle ♂



📖	Ø (mm)
R003001	50
R003003	70
R003004	90
...	...
R003009	150

Cannelé ♀ / Hose barb ♀
Tülle ♀



📖	Ø (mm)
R003101	50
R003103	70
R003104	90
...	...
R003109	150

Fileté ♂ / Thread ♂
Gewinde ♂



📖	Ø (mm)
R003201	1" ½
R003202	2" -50
R003203	2" -70
...	...
R003210	6"

Fileté ♀ / Thread ♀
Gewinde ♀



📖	Ø (mm)
R003301	1" ½
R003302	2" -50
R003303	2" -70
...	...
R003310	6"

Bride ♂ / Flange ♂
Flansch ♂



📖	DN
R003331	50
R003332	65
R003333	80
...	...
R003336	150

Bride ♀ / Flange ♀
Flansch ♀



📖	DN
R003361	50
R003362	65
R003363	80
...	...
R003366	150

Raccords Camlock / Camlock couplings / Camlock Kupplungen

Raccord C / C coupling
Kupplung C



📖	Ø (mm)
R901001	¾" x 19
R901002	1" x 25
R901003	1" ¼ x 32
...	...
R901008	4" x 100

Raccord E / E coupling
Kupplung E



📖	Ø (mm)
R901011	¾" x 19
R901012	1" x 25
R901013	1" ¼ x 32
...	...
R901018	4" x 100

Raccord D / D coupling
Kupplung D



📖	Ø (mm)
R901021	¾"
R901022	1"
R901023	1" ¼
...	...
R901028	4"

Raccord A / A coupling
Kupplung A



📖	Ø (mm)
R901031	¾"
R901032	1"
R901033	1" ¼
...	...
R901038	4"

Raccord B / B coupling
Kupplung B



📖	Ø (mm)
R901041	¾"
R901042	1"
R901043	1" ¼
...	...
R901048	4"

Raccord F / F coupling
Kupplung F



📖	Ø (mm)
R901051	¾"
R901052	1"
R901053	1" ¼
...	...
R901058	4"

Egalement disponible : matériau PP, bouchons, joints, ... / Also available : PP material, caps, O-rings, ... / auch erhältlich : aus PP, Kappe, Dichtungen...

Compensateurs de dilatation / Compensators / Kompensatoren

Raccord ♀ / ♀ coupling
Kupplung ♀



📖	Ø (mm)
R040101	¾"
R040102	1"
R040103	1" ¼
...	...
R040107	3"

Bride acier galv. / Flange galv. steel
Flansch aus verzinktem Stahl



📖	DN
R040201	32
R040202	40
R040203	50
...	...
R040211	300

Bride acier inox. / Flange stainless. steel
Flansch aus Edelstahl



📖	DN
R040301	32
R040302	40
R040303	50
...	...
R040311	300

Manchon 0,6 bar / Socket 0,6 bar
Muffe 0,6 bar



📖	Ø (mm)
R040401	24/32
R040402	32/40
R040403	42/50
...	...
R040412	150/165

Manchon 2,5 bar / Socket 2,5 bar
Muffe 2,5 bar



📖	Ø (mm)
R040501	55/65
R040502	65/75
R040503	75/89
...	...
R040510	150/175

Réduction 0,6 bar / Reduction 0,6 bar
Reduktion 0,6 bar



📖	Ø (mm)
R040601	32/40 x 24/32
R040602	40/50 x 24/32
R040603	40/50 x 32/40
R040604	53/63 x 32/40
...	...

Colliers de serrage / Clamps / Schlauchschellen

Crémaillère / Worm drive
Zahnrad



📖	Ø (mm)
R005000	8-16
R005001	10-22
R005002	14-27
...	...
R005014	165-216

Oreilles / Ears
Ohr



📖	Ø (mm)
R041101	1x 8,1/9,5
...	...
R041001	1x 7,5/9
...	...
R005103	2x 7-9
...	...

Tourillon & Double-fil / Gudgeon & Wire
Zapfen & Doppeldraht



📖	Ø (mm)
R041201	26/28
...	...
R041230	240/252
R041301	22/25
...	...
R041334	437/450

Tuyauterie oxygène Air-Line Xtra / Air-Line Xtra oxygen piping / Air-Line Xtra Sauerstoffrohrsystem

 Tube / Pipe
Rohr


📖	Ø (mm)
R041601	16
R041602	20
R041603	25
...	...
R041610	110

 Manchon / Socket
Muffe


📖	Ø (mm)
R041701	16
R041702	20
R041703	25
...	...
R041710	110

 Réduction courte / Reduction, short
Reduktion kurz


📖	Ø (mm)
R041851	20 × 16
R041802	25 × 20
R041803	32 × 16
...	...
R041868	110 × 90

 Réduction longue / Reduction, long
Reduktion lang


📖	Ø (mm)
R041801	16 × 20/25
R041802	20 × 25/32
R041803	25 × 32/40
...	...
R041808	75 × 90/110

 Coude 90° / Elbow 90°
Winkel 90°


📖	Ø (mm)
R042401	16
R042402	20
R042403	25
...	...
R042410	110

 Coude 45° / Elbow 45°
Winkel 45°


📖	Ø (mm)
R042451	16
R042402	20
R042403	25
...	...
R042460	110

 Té / Tee
T-Stück


📖	Ø (mm)
R042101	16
R042102	20
R042103	25
...	...
R042110	110

 Té réduit / Reduced tee
T-Stück reduziert


📖	Ø (mm)
R042201	20 × 16
R042222	25 × 16
R042203	25 × 20
...	...
R042215	63 × 50

 Union / Union
Verschraubung


📖	Ø (mm)
R042801	16
R042802	20
R042803	25
...	...
R042807	63

 Manchon × ♀ / Socket × ♀
Muffe × ♀


📖	Ø (mm)
R041951	20 × ½"
R041952	25 × ¾"
R041953	32 × 1"
-	-

 Manchon × ♀ / Socket × ♀
Muffe × ♀


📖	Ø (mm)
R041901	16/12 × ½"
R041902	20/16 × ½"
R041903	25/20 × ¾"
...	...
R041907	63/50 × 2"

 Bouchon / Cap
Kappe


📖	Ø (mm)
R042901	16
R042902	20
R042903	25
...	...
R042907	63

🛠 colle ABS & clips Cobra page 147 / ABS solvent cement & Cobra clips page 147 / ABS-Lösungsmittelkleber und Cobra-Clips Seite 147

**Tube PEHD & Raccords à compression / HDPE pipe & Compression fittings /
HDPE-Rohr & Klemmverbinder**

 Tube / Pipe
Rohr


📖	Ø (mm)
R005398	16
R005399	20
R005400	25
...	...
R005426	1000

 Manchon / Socket
Muffe


📖	Ø (mm)
R043201	16
R043202	20
R043203	25
...	...
R043210	110

 Manchon réduit / Reduced socket
Muffe reduziert


📖	Ø (mm)
R043301	20 × 16
R043302	25 × 16
R043303	25 × 20
...	...
R043320	110 × 90

 Adaptateur ♂ / ♂ adapter
Adapter ♂


📖	Ø (mm)
R043401	16 × ¾"
R043402	16 × ½"
R043403	16 × ¾"
...	...
R043435	110 × 4"

 Adaptateur ♀ / ♀ adapter
Adapter ♀


📖	Ø (mm)
R043501	16 × ¾"
R043502	16 × ½"
R043503	16 × ¾"
...	...
R043531	110 × 4"

 Coude 45° / Elbow 45°
Winkel 45°


📖	Ø (mm)
R043601	40
R043602	50
R043603	63
R043604	90
R043605	110

Coude 90° / Elbow 90° / Winkel 90°



📖	Ø (mm)
R043701	16
R043702	20
R043703	25
...	...
R043710	110

Coude 90° ♀ / ♀ elbow 90° / Winkel 90° ♀



📖	Ø (mm)
R043801	16 × 3/8"
R043802	16 × 1/2"
R043803	20 × 1/2"
...	...
R043825	110 × 4"

Coude 90° ♂ / ♂ elbow 90° / Winkel 90° ♂



📖	Ø (mm)
R043901	16 × 3/8"
R043902	16 × 1/2"
R043903	20 × 1/2"
...	...
R043924	110 × 4"

Té / Tee / T-Stück



📖	Ø (mm)
R044001	16
R044002	20
R044003	25
...	...
R044010	110

Té ♀ / ♀ Tee / T-Stück ♀



📖	Ø (mm)
R044101	16 × 3/8"
R044102	16 × 1/2"
R044103	16 × 3/4"
...	...
R044133	110 × 4"

Té ♂ / ♂ Tee / T-Stück ♂



📖	Ø (mm)
R044201	16 × 3/8"
R044202	16 × 1/2"
R044203	16 × 3/4"
...	...
R044227	90 × 4"

Bouchon / Cap
Kappe



📖	Ø (mm)
R044301	16
R044302	20
R044303	25
...	...
R044310	110

Collier de prise en charge / Bolt saddle
Anbohrschellen



📖	Ø (mm)
R044401	20 × 1/2"
R044402	25 × 1/2"
R044403	25 × 3/4"
...	...
R044490	315 × 4"

Joint / Seal
Dichtung



📖	Ø (mm)
R044501	16
R044502	20
R044503	25
...	...
R044510	110

Raccords PE électrofusion / Electrofusion PE fittings / PE Elektroschweißkupplungen

☞ p. 146

Manchon / Coupler
Muffe



📖	Ø (mm)
R046101	16
R046102	20
R046103	25
...	...
R046126	710

Manchon réduit / Reduced coupler
Muffe reduziert



📖	Ø (mm)
R046201	20 × 16
R046202	25 × 20
R046203	32 × 20
...	...
R046224	180 × 25

Mamelon réduit / Reduced spigot
Reduktion



📖	Ø (mm)
R046301	32 × 25
R046302	40 × 32
R046303	50 × 40
...	...
R046330	200 × 180

Bouchon monolithique / Monolithic cap
Schweißverschluss



📖	Ø (mm)
R046401	32
R046402	40
R046403	50
R046404	63
-	-

Bouchon / End cap
Verschlußmuffe



📖	Ø (mm)
R046501	20
R046502	25
R046503	32
...	...
R046518	315

Bouchon avec embout / Spigot end plug
Zapfenkappe



📖	Ø (mm)
R046601	20
R046602	25
R046603	32
...	...
R046618	315

Té / Tee
T-Stück



📖	Ø (mm)
R046701	20
R046702	25
R046703	32
...	...
R046715	250

Té réduit / Reduced Tee
T-Stück reduziert



📖	Ø (mm)
R046801	25 × 20
R046802	25 × 32
R046803	32 × 20
...	...
R046835	250 × 110

Té avec bride / Flanged Tee
T-Stück mit Flansch



📖	Ø (mm × DN)
R046901	90 × 80
R046902	110 × 80
R046903	110 × 100
...	...
R046915	250 × 100

Coude 90° / Elbow 90° / Winkel 90°



📖	Ø (mm)
R047001	20
R047002	25
R047003	32
...	...
R047016	250

Coude 45° / Elbow 45° / Winkel 45°



📖	Ø (mm)
R047101	32
R047102	40
R047103	50
...	...
R047114	250

Coude 22° / Elbow 22° / Winkel 22°



📖	Ø (mm)
R047201	90
R047202	110
R047203	125
R047204	160
R047205	180

Coude 360°
Elbow 360°
Winkel 360°



📖	Ø (mm)
R047301	25
R047302	32
R047303	40
-	-

Réduction Y
Y reductor
Y-Reduktion



📖	Ø (mm)
R047401	32 × 25
R047402	40 × 32
R047403	50 × 40
-	-

Coude 90° avec support (et sortie)
Duckfoot elbow 90° (with outlet)
Fußbogen 90° (mit Abgang)



📖	Ø (mm)
R047501	90
R047502	90 × 32
-	-

Coude réglable
Adjustable elbow
Flexwinkel



📖	Ø (mm)
R047601	110
R047602	125
R047603	160
R047604	180
-	-

Coude réglable avec embout
Adjustable elbow, one sided
Flexwinkel Muffe/Spitzende



📖	Ø (mm)
R047701	110
R047702	125
R047703	160
R047704	180
-	-

Collier de transition
Transition saddle
Schelle



📖	Ø (mm)
R047801	63 × 1" ¼
R047802	75 × 1" ¼
R047803	90 × 1" ½
...	...
R047817	250 × 2"

Collier de réparation / Repair saddle
Verstärkungsschelle



📖	Ø (mm)
R047901	63
R047902	75
R047903	90
...	...
R047908	180

Collier de dérivation / Branch saddle
Stützschelle mit Unterschale



📖	Ø (mm)
R048001	63 × 32
R048002	63 × 40
R048003	63 × 50
...	...
R048046	315 × 90

Collier de prélèvement / Tapping saddle
Anbohrschelle mit Unterschale



📖	Ø (mm)
R048101	40 × 20
R048102	40 × 32
R048103	50 × 20
...	...
R048161	250 × 63

Bouchon pour collier de prélèvement
Welding cap for tapping saddle
Kappe für Anbohrschelle



📖	Ø (mm)
R048201	57
R048202	50
R048203	40
-	-

Vanne à boisseau sphérique
Ball valve
Kugelventil



📖	Ø (mm)
R048301	25
R048302	32
R048303	40
...	...
R048309	125

Vanne de prélèvement
Tapping valve
Ventilanbohrarmatur



📖	Ø (mm)
R048401	63 × 32
R048402	63 × 40
R048403	63 × 50
...	...
R048444	250 × 63

Manchon de transition ♂
♂ transition coupler
♂ Übergangsmuffe



📖	Ø (mm)
R048501	20 × ½"
R048502	25 × ¾"
R048503	32 × 1"
...	...
R048509	63 × 2"

Coude 90° de transition ♂
♂ transition elbow 90°
♂ Übergangswinkel 90°



📖	Ø (mm)
R048601	20 × ½"
R048602	25 × ¾"
R048603	32 × 1"
...	...
R048609	63 × 2"

Coude 45° de transition ♂
♂ transition elbow 45°
♂ Übergangswinkel 45°



📖	Ø (mm)
R048701	32 × 1"
R048702	40 × 1"
R048703	32 × 1" ¼
...	...
R048707	63 × 2"

Manchon de transition à bride fonte
Cast iron flange transition coupler
Muffe mit Flansch aus GGG



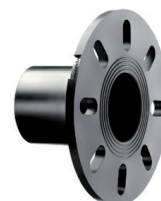
📖	Ø (mm × DN)
R048801	63 × 50
R048802	90 × 80
R048803	110 × 100
...	...
R048807	225 × 200

Mamelon de transition embout fonte
Cast iron spigot transition coupler
Muffe mit Übergangsadapter aus GGG



📖	Ø (mm × DN)
R048901	90 × 80
R048902	110 × 100
R048903	125 × 100
...	...
R048906	225 × 200

Bride fixe
Full face flange
Einschweißflansch



📖	Ø (mm)
R049001	90
-	-

Collet / Flange adaptor
Einschweißbund



📖	Ø (mm)
R049101	20
R049102	25
R049103	32
...	...
R049120	400

Bride / Flange backing ring
Flansch



📖	Ø (mm)
R049201	20 × ½"
R049202	25 × ¾"
R049203	32 × 1"
...	...
R049223	355 × 14"

Joint / Seal
Dichtung

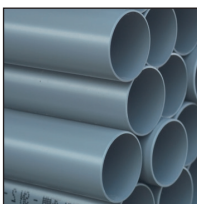


📖	Ø (mm)
R049301	20
R049302	25
R049303	32
...	...
R049316	400

☞ machines & accessoires page 146 / machines & accessories page 146 / Maschinen & Zubehör Seite 146

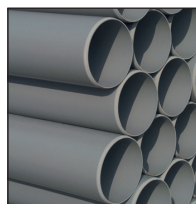
Tube PVC évacuation / Drainage PVC pipe / Abflussleitungen aus PVC

SN2 (SDR 51) NF-E



📖	Ø (mm)
R005461	32
R005462	40
R005463	50
...	...
R005475	315

SN4 (SDR 41)



📖	Ø (mm)
R005481	110
R005482	125
R005483	160
...	...
R005410	800

KGEM



📖	Ø (mm)
R005501	110
R005502	125
R005503	160
...	...
R005508	500

Raccords PVC évacuation / Drainage PVC fittings / Drainage Kupplungen aus PVC

Coude 20° ♂ × ♀ / Elbow 20° ♂ × ♀
Winkel 20° ♂ × ♀



📖	Ø (mm)
R050101	32
R050102	40
R050103	50
...	...
R050112	160

Coude 20° ♀ × ♀ / Elbow 20° ♀ × ♀
Winkel 20° ♀ × ♀



📖	Ø (mm)
R050201	32
R050202	40
R050203	50
...	...
R050212	160

Coude 30° ♂ × ♀ / Elbow 30° ♂ × ♀
Winkel 30° ♂ × ♀



📖	Ø (mm)
R050301	32
R050302	40
R050303	50
...	...
R050312	160

Coude 30° ♀ × ♀ / Elbow 30° ♀ × ♀
Winkel 30° ♀ × ♀



📖	Ø (mm)
R050401	32
R050402	40
R050403	50
...	...
R050412	160

Coude 45° ♂ × ♀ / Elbow 45° ♂ × ♀
Winkel 45° ♂ × ♀



📖	Ø (mm)
R050501	32
R050502	40
R050503	50
...	...
R050515	315

Coude 45° ♀ × ♀ / Elbow 45° ♀ × ♀
Winkel 45° ♀ × ♀



📖	Ø (mm)
R050601	32
R050602	40
R050603	50
...	...
R050615	315

Coude 45° à joint / Elbow 45° with seal
Winkel 45° mit Dichtung



📖	Ø (mm)
R050704	63
R050705	75
R050706	80
...	...
R050715	315

Coude 67° ♂ × ♀ / Elbow 67° ♂ × ♀
Winkel 67° ♂ × ♀



📖	Ø (mm)
R050801	32
R050802	40
R050803	50
...	...
R050813	200

Coude 67° ♀ × ♀ / Elbow 67° ♀ × ♀
Winkel 67° ♀ × ♀



📖	Ø (mm)
R050901	32
R050902	40
R050903	50
...	...
R050913	200

Coude 67° à joint / Elbow 67° with seal
Winkel 67° mit Dichtung



📖	Ø (mm)
R051004	63
R051005	75
R051006	80
...	...
R051013	200

Coude 87° ♂ × ♀ / Elbow 87° ♂ × ♀
Winkel 87° ♂ × ♀



📖	Ø (mm)
R051101	32
R051102	40
R051103	50
...	...
R051115	315

Coude 87° ♂ × ♀ / Elbow 87° ♂ × ♀
Winkel 87° ♂ × ♀



📖	Ø (mm)
R051201	32
R051202	40
R051203	50
...	...
R051210	125

Coude 87° ♀ × ♀ / Elbow 87° ♀ × ♀
Winkel 87° ♀ × ♀



📖	Ø (mm)
R051301	32
R051302	40
R051303	50
...	...
R051315	315

Coude 87° ♀ × ♀ / Elbow 87° ♀ × ♀
Winkel 87° ♀ × ♀



📖	Ø (mm)
R051401	32
R051402	40
R051403	50
...	...
R051413	200

Coude 87° à joint / Elbow 87° with seal
Winkel 87° mit Dichtung



📖	Ø (mm)
R051504	63
R051505	75
R051506	80
...	...
R051515	315

Secteur 15°
Section 15°
Sektor 15°



📖	Ø (mm)
R051608	100
R051609	110
R051610	125
...	...
R051615	315

Secteur 30°
Section 30°
Sektor 30°



📖	Ø (mm)
R051708	100
R051709	110
R051710	125
...	...
R051715	315

Coude double 87° parallèle ♂ × ♀
Double elbow 87° parallel ♂ × ♀
Doppelwinkel 87° parallel ♂ × ♀



📖	Ø (mm)
R051801	32
R051802	40
R051803	50
...	...
R051813	200

Coude double 87° équerre ♂ × ♀
Double elbow 87° square ♂ × ♀
Doppelwinkel 87° senkrecht ♂ × ♀



📖	Ø (mm)
R051901	32
R051902	40
R051903	50
...	...
R051913	200

Coude double 87° parallèle ♀ × ♀
Double elbow 87° parallel ♀ × ♀
Doppelwinkel 87° parallel ♀ × ♀



📖	Ø (mm)
R052001	32
R052002	40
R052003	50
...	...
R052113	200

Coude double 87° équerre ♀ × ♀
Double elbow 87° square ♀ × ♀
Doppelwinkel 87° senkrecht ♀ × ♀



📖	Ø (mm)
R052101	32
R052102	40
R052103	50
...	...
R052113	200

Té pied de biche 87° ♂ × ♀
Tee claw 87° ♂ × ♀
T-Stück Hebel 87° ♂ × ♀



📖	Ø (mm)
R052201	32
R052202	40
R052203	40/32
...	...
R052206	50/32

Té pied de biche 87° ♀ × ♀
Tee claw 87° ♀ × ♀
T-Stück Hebel 87° ♀ × ♀



📖	Ø (mm)
R052301	32
R052302	40
R052303	40/32
...	...
R052306	50/32

Croix pied de biche 87° ♂ × ♀
Cross claw 87° ♂ × ♀
Kreuz Hebel 87° ♂ × ♀



📖	Ø (mm)
R052401	32
R052402	40
R052403	40/32
R052404	50
R052405	50/40

Croix pied de biche 87° ♀ × ♀
Cross claw 87° ♀ × ♀
Kreuz Hebel 87° ♀ × ♀



📖	Ø (mm)
R052501	32
R052502	40
R052503	40/32
R052504	50
R052505	50/40

Té 45° ♂ × ♀
Tee 45° ♂ × ♀
T-Stück 45° ♂ × ♀



📖	Ø (mm)
R052601	32
R052602	40
R052603	40/32
...	...
R052672	315

Té double 45° parallèle ♂ × ♀
Double Tee 45° parallel ♂ × ♀
Doppel T-Stück 45° parallel ♂ × ♀



📖	Ø (mm)
R052701	32
R052702	40
R052703	40/32
...	...
R052754	125/40

Té double 45° équerre ♂ × ♀
Double Tee 45° square ♂ × ♀
Doppel T-Stück 45° senkrecht ♂ × ♀



📖	Ø (mm)
R052801	32
R052802	40
R052803	40/32
...	...
R052854	125/40

Té 45° ♀ × ♀
Tee 45° ♀ × ♀
T-Stück 45° ♀ × ♀



📖	Ø (mm)
R052901	32
R052902	40
R052903	40/32
...	...
R052972	315

Té double 45° parallèle ♀ × ♀
Double Tee 45° parallel ♀ × ♀
Doppel T-Stück 45° parallel ♀ × ♀



📖	Ø (mm)
R053001	32
R053002	40
R053003	40/32
...	...
R053046	125

Té double 45° équerre ♀ × ♀
Double Tee 45° square ♀ × ♀
Doppel T-Stück 45° senkrecht ♀ × ♀



📖	Ø (mm)
R053101	32
R053102	40
R053104	50
...	...
R053146	125

Té 67° ♂ × ♀
Tee 67° ♂ × ♀
T-Stück 67° ♂ × ♀



📖	Ø (mm)
R053201	32
R053202	40
R053203	40/32
...	...
R053262	200/100

Té double 67° parallèle ♂ × ♀
Double Tee 67° parallel ♂ × ♀
Doppel T-Stück 67° parallel ♂ × ♀



📖	Ø (mm)
R053301	32
R053302	40
R053303	40/32
...	...
R053348	125/40

Té double 67° équerre ♂ × ♀
Double Tee 67° square ♂ × ♀
Doppel T-Stück 67° senkrecht ♂ × ♀



📖	Ø (mm)
R053401	32
R053402	40
R053404	50
...	...
R053447	125/50

Té 67° ♀ × ♀
Tee 67° ♀ × ♀
T-Stück 67° ♀ × ♀



📖	Ø (mm)
R053501	32
R053502	40
R053503	40/32
...	...
R053557	200

Té double 67° parallèle ♀ × ♀
Double Tee 67° parallel ♀ × ♀
Doppel T-Stück 67° parallel ♀ × ♀



📖	Ø (mm)
R053601	32
R053602	40
R053603	40/32
...	...
R053642	125

Té double 67° équerre ♀ × ♀
Double Tee 67° square ♀ × ♀
Doppel T-Stück 67° senkrecht ♀ × ♀



📖	Ø (mm)
R053701	32
R053702	40
R053704	50
...	...
R053742	125

Té 87° ♂ × ♀
Tee 87° ♂ × ♀
T-Stück 87° ♂ × ♀



📖	Ø (mm)
R053801	32
R053802	40
R053803	40/32
...	...
R053872	315

Té double 87° parallèle ♂ × ♀
Double Tee 87° parallel ♂ × ♀
Doppel T-Stück 87° parallel ♂ × ♀



📖	Ø (mm)
R053901	32
R053902	40
R053903	40/32
...	...
R053955	125/32

Té double 87° équerre ♂ × ♀
Double Tee 87° square ♂ × ♀
Doppel T-Stück 87° senkrecht ♂ × ♀



📖	Ø (mm)
R054001	32
R054002	40
R054003	40/32
...	...
R054054	125/40

Té 87° ♀ × ♀
Tee 87° ♀ × ♀
T-Stück 87° ♀ × ♀



📖	Ø (mm)
R054101	32
R054102	40
R054103	40/32
...	...
R054172	315

Té double 87° parallèle ♀ × ♀
Double Tee 87° parallel ♀ × ♀
Doppel T-Stück 87° parallel ♀ × ♀



📖	Ø (mm)
R054201	32
R054202	40
R054203	40/32
...	...
R054246	125

Té double 87° équerre ♀ × ♀
Double Tee 87° square ♀ × ♀
Doppel T-Stück 87° senkrecht ♀ × ♀



📖	Ø (mm)
R054301	32
R054302	40
R054303	40/32
...	...
R054346	125

Té 45° à joint
Tee 45° with seal
T-Stück 45° mit Dichtung



📖	Ø (mm)
R054401	63
R054402	63/40
R054403	75
...	...
R054415	250

Té double 45° parallèle à joint
Double Tee 45° parallel with seal
Doppel T-Stück 45° parallel mit Dichtung



📖	Ø (mm)
R054501	63
R054503	75
R054504	80
...	...
R054514	200

Té double 45° équerre à joint
Double Tee 45° square with seal
Doppel T-Stück 45° senkrecht mit Dichtung



📖	Ø (mm)
R054601	63
R054603	75
R054604	80
...	...
R054614	200

Té 67° à joint
Tee 67° with seal
T-Stück 67° mit Dichtung



📖	Ø (mm)
R054701	63
R054702	75
R054703	75/40
...	...
R054714	200

Té double 67° parallèle à joint
Double Tee 67° parallel with seal
Doppel T-Stück 67° parallel mit Dichtung



📖	Ø (mm)
R054801	63
R054802	75
R054804	80
...	...
R054814	200

Té double 67° équerre à joint
Double Tee 67° square with seal
Doppel T-Stück 67° senkrecht mit Dichtung



	Ø (mm)
R054901	63
R054902	75
R054904	80
...	...
R054914	200

Té 87° à joint
Tee 87° with seal
Te 87° mit Dichtung



	Ø (mm)
R055001	63
R055002	75
R055003	80
...	...
R055015	250

Té double 87° parallèle à joint
Double Tee 87° parallel with seal
Doppel T-Stück 87° parallel mit Dichtung



	Ø (mm)
R055101	63
R055102	75
R055103	80
...	...
R055114	200

Té double 87° équerre à joint
Double Tee 87° square with seal
Doppel T-Stück 87° senkrecht mit Dichtung



	Ø (mm)
R055201	63
R055202	75
R055203	80
...	...
R055214	200

Manchon de dilatation V
Dilatation socket V
Expansionshülse V



	Ø (mm)
R055301	32
R055302	40
R055303	50
...	...
R055314	250

Manchon de dilatation H
Dilatation socket H
Expansionshülse H



	Ø (mm)
R055401	32
R055402	40
R055403	50
...	...
R055414	250

Réduction incorporée
Internal reduction
Reduktion kurz



	Ø (mm)
R055501	32/25
R055502	40/32
R055503	50/40
R055504	50/32
-	-

Réduction extérieure concentrique
Concentric external reduction
Reduktion lang konzentrisch



	Ø (mm)
R055601	250/160
R055602	250/125
R055603	250/110
...	...
R055610	315/100

Réduction extérieure excentrée
Excentric external reduction
Reduktion lang exzentrisch



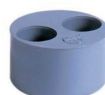
	Ø (mm)
R055701	40/32
R055702	50/40
R055703	50/32
...	...
R055764	315/160

Tampon 1× / Plug 1×
Reduktion 1×



	Ø (mm)
R055801	63/50
R055802	63/40
R055803	63/32
...	...
R055841	125/32

Tampon 2× / Plug 2×
Reduktion 2×



	Ø (mm)
R055901	80/32/32
R055902	90/40/32
R055903	90/32/32
...	...
R055919	125/32/32

Tampon 3× / Plug 3×
Reduktion 3×



	Ø (mm)
R056001	90/32/32/32
R056002	100/40/40/32
R056003	100/40/32/32
...	...
R056015	125/32/32/32

Bouchon / Cap
Kappe



	Ø (mm)
R056101	32
R056102	40
R056103	50
...	...
R056113	200

Bouchon hermétique / Tight cap
Kappe hermetisch



	Ø (mm)
R056202	40
R056203	50
R056204	63
...	...
R056212	200

Coulisse ♀ × ♀ / Groove ♀ × ♀
Schlitten ♀ × ♀



	Ø (mm)
R056301	32
R056302	40
R056303	50
...	...
R056310	125

Manchon ♂ × ♀ / Socket ♂ × ♀
Muffe ♂ × ♀



	Ø (mm)
R056401	32
R056402	40
R056403	50
...	...
R056413	200

Manchon ♀ × ♀ / Socket ♀ × ♀
Muffe ♀ × ♀



	Ø (mm)
R056501	32
R056502	40
R056503	50
...	...
R056515	200

Manchon à joint / Socket with seal
Muffe mit Dichtung



	Ø (mm)
R056601	63
R056602	75
R056603	80
R056604	90
R056605	100

Raccords PVC assainissement SN4, KGEM et HT disponibles sur demande / PVC ducting SN4, KGEM and HT fittings available on request / SN4, KGEM und HT Drainage Kupplungen aus PVC erhältlich auf Anfrage

Tube PVC pression / Pressure PVC pipe / Druckrohrleitungen aus PVC

PN10



	Ø (mm)
R005340	20
R005341	25
R005342	32
...	...
R005321	315

PN16



	Ø (mm)
R005300	12
R005301	16
R005302	20
...	...
R005318	315

Transparent / Translucent
Transparente



	Ø (mm)
R005240	25
R005241	32
R005242	40
...	...
R005247	110

Raccords PVC pression / Pressure PVC fittings / Druckkupplungen aus PVC

Coude 90° col. ♀ × col. ♀
Elbow 90° solv. ♀ × solv. ♀
Winkel 90° Kleb ♀ × Kleb ♀



	Ø (mm)
R007501	16
R007502	20
R007503	25
...	...
R007520	315

Coude réduit 90° col. ♀ × col. ♀
Reduced elbow 90° solv. ♀ × solv. ♀
Winkel reduziert 90° Kleb ♀ × Kleb ♀



	Ø (mm)
R310101	40 × 32
R310102	50 × 32
R310103	50 × 40
R310104	50/40 × 50
R310105	63/50 × 63

Coude 90° col. ♀ × col. ♂
Elbow 90° solv. ♀ × solv. ♂
Winkel 90° Kleb ♀ × Kleb ♂



	Ø (mm)
R310201	50/40 × 50
R310202	63/50 × 63
-	-

Coude 45° col. ♀ × col. ♀
Elbow 45° solv. ♀ × solv. ♀
Winkel 45° Kleb ♀ × Kleb ♀



	Ø (mm)
R007601	16
R007602	20
R007603	25
...	...
R007620	315

Coude 45° col. ♀ × col. ♂
Elbow 45° solv. ♀ × solv. ♂
Winkel 45° Kleb ♀ × Kleb ♂



	Ø (mm)
R310301	50/40 × 50
R310302	63/50 × 63
-	-

Courbe 90° courte col. ♀ × col. ♀
Bend 90° short solv. ♀ × solv. ♀
Bogen 90° kurz Kleb ♀ × Kleb ♀



	Ø (mm)
R007704	32
R007705	40
R007706	50
...	...
R007720	315

Courbe 90° longue col. ♀ × col. ♀
Bend 90° long solv. ♀ × solv. ♀
Bogen 90° lang Kleb ♀ × Kleb ♀



	Ø (mm)
R310401	16
R310402	20
R310403	25
...	...
R310413	160

Courbe 45° col. ♀ × col. ♀
Bend 45° solv. ♀ × solv. ♀
Bogen 45° Kleb ♀ × Kleb ♀



	Ø (mm)
R007804	32
R007805	40
R007806	50
...	...
R007820	315

Té col. ♀
Tee solv. ♀
T-Stück Kleb ♀



	Ø (mm)
R007901	16
R007902	20
R007903	25
...	...
R007920	315

Té 45° col. ♀ / Tee 45° solv. ♀
T-Stück 45° Kleb ♀



	Ø (mm)
R008001	16
R008002	20
R008003	25
...	...
R008016	250

Té réduit col. ♀ / Reduced tee solv. ♀
T-Stück reduziert Kleb ♀



	Ø (mm)
R008101	20 × 16
R008102	25 × 16
R008103	25 × 20
...	...
R008160	315 × 225

Croix col. ♀ / Cross solv. ♀
Kreuz Kleb ♀



	Ø (mm)
R008201	16
R008202	20
R008203	25
...	...
R008210	110

Manchon col. ♀
Socket solv. ♀
Muffe Kleb ♀



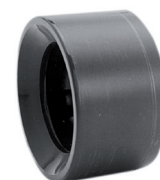
	Ø (mm)
R008301	16
R008302	20
R008303	25
...	...
R008320	315

Bouchon encol. ♀
Cap solv. ♀
Kappe Kleb ♀



	Ø (mm)
R008401	16
R008402	20
R008403	25
...	...
R008420	315

Réduction courte col. ♀ × col. ♂
Reduction short solv. ♀ × solv. ♂
Reduktion kurz Kleb ♀ × Kleb ♂



	Ø (mm)
R008501	20 × 16
R008502	25 × 16
R008503	25 × 20
...	...
R008580	315 × 280

Réduction longue col. ♀ × col. ♀
Reduction long solv. ♀ × solv. ♀
Reduktion lang Kleb ♀ × Kleb ♀



📖	Ø (mm)
R008601	25/20 × 16
R008602	25/20 × 20
R008603	32/25 × 16
R008604	32/25 × 20
...	...

Embout cannelé × col. ♂
Hose barb × solv. ♂
Tülle × Kleb ♂



📖	Ø (mm)
R008701	12 × 12
R008702	16 × 16
R008703	20 × 20
...	...
R008708	63 × 60

Collet rainuré col. ♀
Flange adapter grooved solv. ♀
Bundbuchse gerillt Kleb ♀



📖	Ø (mm)
R008901	16
R008902	20
R008903	25
...	...
R008920	315

Collet lisse col. ♀
Flange adapter flat solv. ♀
Bundbuchse glatt Kleb ♀



📖	Ø (mm)
R310501	16
R310502	20
R310503	25
...	...
R310520	315

Bride PVC
PVC flange backing ring
Losflansch aus PVC



📖	Ø (mm)
R009001	16
R009002	20
R009003	25
...	...
R009020	315

Bride PA-PRFV
PA-FRP flange backing ring
Losflansch aus PA-GFK



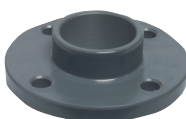
📖	Ø (mm)
R310603	25
R310604	32
R310605	40
...	...
R310615	225

Bride pleine
Blind flange
Blindflansch



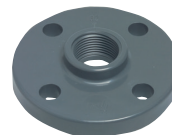
📖	Ø (mm)
R310701	16
R310702	20
R310703	25
...	...
R310720	315

Collet-bride col. ♀
Flange solv. ♀
Flansch Kleb ♀



📖	Ø (mm)
R310808	75
R310809	90
R310810	110
...	...
R310820	315

Collet-bride vis. ♀
Flange thr. ♀
Flansch Gew. ♀



📖	Ø
R310901	½"
R310902	¾"
R310903	1"
...	...
R310909	4"

Joint plat
Flat gasket
Flachdichtung



📖	Ø (mm)
R009101	16
R009102	20
R009103	25
...	...
R009120	315

Visserie acier 5.6 zingué, A2 & A4
Screw set 5.6 zinc plated steel, A2 & A4
Schrauben verzinkt Stahl 5.6, A2 & A4



📖	Ø (mm)
R311001	M12 × 60
R311002	M16 × 70
R311003	M16 × 80
...	...
R311040	M20 × 340

Coude 90° col. ♀ × vis. ♀
Elbow 90° solv. ♀ × thr. ♀
Winkel 90° Kleb ♀ × Gew. ♀



📖	Ø (mm)
R009201	16 × ¾"
R009202	20 × ½"
R009203	25 × ¾"
...	...
R009207	63 × 2"

Coude 90° renforcé col. ♀ × vis. ♀
Elbow 90° reinforced solv. ♀ × thr. ♀
Winkel 90° verstärkt Kleb ♀ × Gewinde ♀



📖	Ø (mm)
R009301	16 × ¾"
R009302	20 × ½"
R009303	25 × ¾"
...	...
R009310	110 × 4"

Coude 90° col. ♀ × vis. ♂
Elbow 90° solv. ♀ × thr. ♂
Winkel 90° Kleb ♀ × Gew. ♂



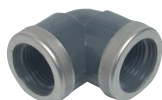
📖	Ø (mm)
R009405	32 × 1" ¼
R009406	40 × 1" ¼
R009408	50 × 1" ¼
R009409	50 × 1" ½
R009410	50 × 2"

Coude 90° vis. ♀ × vis. ♀
Elbow 90° thr. ♀ × thr. ♀
Winkel 90° Gew. ♀ × Gew. ♀



📖	Ø
R311101	¾"
R311102	½"
R311103	¾"
...	...
R311110	4"

Coude 90° renforcé vis. ♀ × vis. ♀
Elbow 90° reinforced thr. ♀ × thr. ♀
Winkel 90° verstärkt Gew. ♀ × Gew. ♀



📖	Ø
R311202	½"
R311203	¾"
R311204	1"
...	...
R311207	2"

Coude 45° vis. ♀ × vis. ♀
Elbow 45° thr. ♀ × thr. ♀
Winkel 45° Gew. ♀ × Gew. ♀



📖	Ø (mm)
R311302	½"
R311303	¾"
R311304	1"
R311306	1" ½
R311307	2"

Coude 45° renforcé col. ♀ × vis. ♀
Elbow 45° reinforced solv. ♀ × thr. ♀
Winkel 45° verstärkt Kleb ♀ × Gew. ♀



📖	Ø (mm)
R311402	20 × ½"
R311403	25 × ¾"
R311404	32 × 1"
...	...
R311407	63 × 2"

Té col. ♀ × vis. ♀
Tee solv. ♀ × thr. ♀
T-Stück Kleb ♀ × Gew. ♀



📖	Ø (mm)
R009507	32 × 1"
R009511	40 × 1"¼
R009516	50 × 1"½
R009522	63 × 2"
-	-

Té renforcé col. ♀ × vis. ♀
Tee reinforced solv. ♀ × thr. ♀
T-Stück verstärkt Kleb ♀ × Gew. ♀



📖	Ø (mm)
R009601	16 × ¾"
R009602	20 × ½"
R009603	25 × ¾"
...	...
R009610	110 × 4"

Té col. ♀ × vis. ♂
Tee solv. ♀ × thr. ♂
T-Stück Kleb ♀ × Gew. ♂



📖	Ø (mm)
R009705	32 × 1"
R009706	32 × 1"¼
R009707	40 × 1"
...	...
R009718	63 × 2"

Té 3× vis. ♀
Tee 3× thr. ♀
T-Stück 3× Gew. ♀



📖	Ø
R311501	¾"
R311502	½"
R311503	¾"
...	...
R311510	4"

Té renforcé 3× vis. ♀
Tee reinforced 3× thr. ♀
T-Stück verstärkt 3× Gew. ♀



📖	Ø (mm)
R311602	½"
R311603	¾"
R311604	1"
...	...
R311607	2"

Manchon col. ♀ × vis. ♀
Socket solv. ♀ × thr. ♀
Muffe Kleb ♀ × Gew. ♀



📖	Ø (mm)
R009801	16 × ¾"
R009802	20 × ½"
R009803	25 × ½"
...	...
R009813	110 × 4"

Manchon renforcé col. ♀ × vis. ♀
Socket reinforced solv. ♀ × thr. ♀
Muffe verstärkt Kleb ♀ × Gew. ♀



📖	Ø (mm)
R009901	16 × ¾"
R009902	20 × ½"
R009903	25 × ¾"
...	...
R009910	110 × 4"

Manchon vis. ♀ × vis. ♀
Socket thr. ♀ × thr. ♀
Muffe Gew. ♀ × Gew. ♀



📖	Ø
R311701	¾"
R311702	½"
R311703	¾"
...	...
R311710	4"

Embout col. ♀ × vis. ♂
Bush solv. ♀ × thr. ♂
Muffe Kleb ♀ × Gew. ♂



📖	Ø (mm)
R311801	25 × ½"
R311802	25 × ¾"
R311803	32/25 × 1"
...	...
R311838	200 × 8"

Embout A col. ♀ × vis. ♂
Bush A solv. ♀ × thr. ♂
Muffe A Kleb ♀ × Gew. ♂



📖	Ø (mm)
R010203	20/16 × ¾"
R010204	20/16 × ½"
R010205	20 × ½"
...	...
R010230	110 × 4"

Embout B col. ♀ × vis. ♂
Bush B solv. ♀ × thr. ♂
Muffe B Kleb ♀ × Gew. ♂



📖	Ø (mm)
R311901	32/40 × 1"
R311902	32/40 × 1"¼
R311903	40/50 × 1"½
...	...
R311908	63/75 × 2"½

Embout col. ♂/♀ × vis. ♀
Bush solv. ♂/♀ × thr. ♀
Muffe Kleb ♂/♀ × Gew. ♀



📖	Ø (mm)
R312001	20/16 × ¾"
R312002	20/16 × ½"
R312003	20/16 × ¾"
...	...
R312026	110/90 × 4"

Embout renforcé col. ♂/♀ × vis. ♀
Bush reinforced solv. ♂/♀ × thr. ♀
Muffe verstärkt Kleb ♂/♀ × Gew. ♀



📖	Ø (mm)
R312101	12/16 × ¾"
R312102	16/20 × ½"
R312103	20/25 × ¾"
...	...
R312107	50/63 × 2"

Embout réduit A col. ♂/♀ × vis. ♀
Reduced bush A solv. ♂/♀ × thr. ♀
Muffe reduziert A Kleb ♂/♀ × Gew. ♀



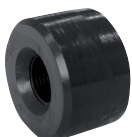
📖	Ø (mm)
R010301	50/40 × 1"½
R010302	63/50 × 2"
R010303	75/63 × 2"½
R010304	90/75 × 3"
-	-

Embout réduit B col. ♂ × vis. ♀
Reduced bush B solv. ♂ × thr. ♀
Muffe reduziert B Kleb ♂ × Gew. ♀



📖	Ø (mm)
R010003	20 × ¾"
R010004	25 × ¾"
R010005	25 × ½"
...	...
R010031	125 × 4"

Embout réduit C col. ♂ × vis. ♀
Reduced bush C solv. ♂ × thr. ♀
Muffe reduziert C Kleb ♂ × Gew. ♀



📖	Ø (mm)
R312201	50 × ½"
R312202	50 × ¾"
R312203	63 × ½"
...	...
R312206	75 × ¾"

Embout réduit renforcé col. ♂ × vis. ♀
Reduced bush reinforced solv. ♂ × thr. ♀
Muffe reduziert ref. Kleb ♂ × Gew. ♀



📖	Ø (mm)
R010101	20 × ¾"
R010102	25 × ½"
R010103	32 × ¾"
...	...
R010106	63 × 1"½

Mamelon col. ♂ × vis. ♂
Nipple solv. ♂ × thr. ♂
Nippel Kleb ♂ × Gew. ♂



📖	Ø (mm)
R312301	16 × ¾"
R312302	20 × ½"
R312303	25 × ¾"
...	...
R312312	63 × 2"

Mamelon vis. ♂ × vis. ♂
Nipple thr. ♂ × thr. ♂
Nippel Gew. ♂ × Gew. ♂



📖	Ø
R010701	3/8"
R010703	1/2"
R010705	3/4"
...	...
R010713	2"

Mamelon réduit vis. ♂ × vis. ♂
Reduced nipple thr. ♂ × thr. ♂
Nippel reduziert Gew. ♂ × Gew. ♂



📖	Ø
R010704	1/2" × 3/8"
R010706	3/4" × 1/2"
R010708	1" × 3/4"
...	...
R010720	2" × 1" 1/2"

Mamelon vis. ♂ × vis. ♀
Nipple thr. ♂ × thr. ♀
Nippel Gew. ♂ × Gew. ♀



📖	Ø
R312501	3/8" × 1/2"
R312502	1/2" × 3/8"
R312503	1/2" × 3/4"
...	...
R312533	4" × 3"

Bouchon vis. ♀
Cap thr. ♀
Kappe Gew. ♀



📖	Ø (mm)
R010601	3/8"
R010602	1/2"
R010603	3/4"
...	...
R010607	2"

Bouchon vis. ♂
Plug thr. ♂
Kappe Gew. ♂



📖	Ø (mm)
R010801	3/8"
R010802	1/2"
R010803	3/4"
...	...
R010807	2"

Embout cannelé × vis. ♂ ou ♀
Hose barb × thr. ♂ or ♀
Tülle × Gew. ♂ oder ♀



📖	Ø (mm)
R010902	3/8" × 16/18
...	...
R010915	2" × 60/66
R010921	3/4" × 16/18
...	...
R010932	2" 1/2 × 60

Traversées de paroi bride × vis. ♂/♀
Bulkhead fitting flange × thr. ♂/♀
Durchführung Flansch × Gew. ♂/♀



📖	Ø (mm)
R011001	16 × 3/8"
R011002	20 × 1/2"
R011003	25 × 3/4"
R011004	40 × 1" 1/2"
R011005	63 × 2"

Traversées de paroi col. ♂/♀ × vis. ♂
Bulkhead fitting solv. ♂/♀ × thr. ♂
Durchführung Kleb ♂/♀ × Gew. ♂



📖	Ø (mm)
R312601	20/25 × 3/4"
R312602	25/32 × 1"
R312603	32/40 × 1" 1/4"
...	...
R312610	110 × M133

Traversées de paroi col. ♀/vis ♂ × vis. ♂
Bulkhead fitting solv. ♀/thr. ♂ × thr. ♂
Durchführung Kleb ♀/Gew. ♂ × Gew. ♂



📖	Ø (mm)
R312701	20 × 3/4"
R312702	25 × 1"
R312703	32 × 1" 1/4"
...	...
R312709	90 × M113/4"

Union col. ♀ × col. ♀
Union solv. ♀ × solv. ♀
Verschraubung Kleb ♀ × Kleb ♀



📖	Ø (mm)
R011302	16
R011303	20
R011304	25
...	...
R011311	110

Union col. ♀ × vis. ♀
Union solv. ♀ × thr. ♀
Verschraubung Kleb ♀ × Gew. ♀



📖	Ø (mm)
R011501	16 × 3/8"
R011502	20 × 1/2"
R011503	25 × 3/4"
...	...
R011510	110 × 4"

Union col. ♀ × vis. ♂
Union solv. ♀ × thr. ♂
Verschraubung Kleb ♀ × Gew. ♂



📖	Ø (mm)
R011401	16 × 3/8"
R011402	20 × 1/2"
R011403	25 × 3/4"
...	...
R011410	110 × 4"

Union vis. ♀ × vis. ♀
Union thr. ♀ × thr. ♀
Verschraubung Gew. ♀ × Gew. ♀



📖	Ø
R312801	3/8"
R312802	1/2"
R312803	3/4"
...	...
R312810	4"

Union vis. ♀ × vis. ♂
Union thr. ♀ × thr. ♂
Verschraubung Gew. ♀ × Gew. ♂



📖	Ø (mm)
R312902	1/2"
R312903	3/4"
R312904	1"
...	...
R312910	4"

Collet d'union
Union end
Verbindungsmuffe



📖	Ø (mm)
R313001	16
R313002	20
R313003	25
...	...
R313010	110

Manchon d'union
Union bush
Verschraubungsmuffe



📖	Ø (mm)
R313101	16
R313102	20
R313103	25
...	...
R313110	110

Ecrou d'union
Union nut
Verbindungsmutter



📖	Ø (mm)
R313201	16
R313202	20
R313203	25
...	...
R313210	110

Joint d'union
Union O-ring
Dichtung



📖	Ø (mm)
R313301	16
R313302	20
R313303	25
...	...
R313310	110

Collier prise en charge ♀ / Clamp saddle ♀
Anbohrschelle ♀



📖	Ø (mm)
R044401	20 × ½"
R044402	25 × ½"
R044403	25 × ¾"
...	...
R044490	315 × 4"

Adaptateur à coller ♀ / Pipe connector ♀
Adapter Kleb ♀



📖	Ø (mm)
R011204	50 × ½"
R011207	63 × ½"
-	-

Collecteur 3× / 3× Collector
Kollektor 3×



📖	Ø (mm)
R313701	50
R313702	63
-	-

🔗 *Tableau de correspondance des diamètres de tuyauterie PVC page 201 / PVC piping diameter conversion table page 201*
Umrechnungstabelle für PVC-Rohrleitungen Seite 201

Dimensions impériales disponibles sur demande / imperial dimensions available on request / Empire-Maßsystem erhältlich auf Anfrage

Vannes PVC à boisseau sphérique 2-voies / 2-ways PVC ball valves / Válvulas de PVC de bola 2-vías

S4 col. ♀ / S4 solv. ♀
S4 Kleb ♀



📖	Ø (mm)
R121116	16
R121118	20
R121120	25
...	...
R121746	110

S4 col. ♂ / S4 solv. ♂
S4 Kleb ♂



📖	Ø (mm)
R121239	16
R121241	20
R121243	25
...	...
R125274	110

S4 vis. ♀ / S4 thr. ♀
S4 Gew. ♀



📖	Ø
R121132	¾"
R121134	½"
R121136	¾"
...	...
R121148	3"

S4 bride / S4 flange
S4 Flansch



📖	Ø (mm)
R124200	16
R122277	20
R122276	25
...	...
R124209	110

S4 fusion PE ♀ / S4 PE fusion ♀
S4 PE Fusion ♀



📖	Ø (mm)
R125357	16
R125358	20
R125359	25
...	...
R125366	110

S4 fusion PE ♂ / S4 PE fusion ♂
S4 PE Fusion ♂



📖	Ø (mm)
R121150	16
R121152	20
R121154	25
...	...
R122637	110

Support S4 / S4 Bracket
Halterung S4



📖	DN
R170276	10/15
R170277	20
R170278	25
...	...
R170267	80

Boîtier fin de course / Limit switch box
Endschaltervorrichtung



📖	Ø (mm)
R300110	50
R300120	63
-	-

S6 col. ♀ / S6 solv. ♀
S6 Kleb ♀



📖	Ø (mm)
R012001	16
R012002	20
R012003	25
...	...
R012010	110

S6 vis. ♀ / S6 thr. ♀
S6 Gew. ♀



📖	Ø
R127701	¾"
R127702	½"
R127703	¾"
...	...
R129027	2" ½

S6 fusion PE ♀ / S6 PE fusion ♀
S6 PE Fusion ♀



📖	Ø (mm)
R126966	16
R126967	20
R126968	25
...	...
R129021	75

S6 fusion PE ♂ / S6 PE fusion ♂
S6 PE Fusion ♂



📖	Ø (mm)
R127706	16
R127707	20
R127708	25
...	...
R129023	75

Vannes également disponibles en matériau PP ou PVDF
Valves also available made of PP or PVDF
Ventile auch erhältlich aus PP oder PVDF

Vannes PVC à boisseau sphérique 3-voies / 3-ways PVC ball valves / PVC Dreiwegkugelhahnventile

S4 L col. ♀ / S4 L solv. ♀
S4 L Kleb ♀



📖	Ø (mm)
R120626	16
R120628	20
R121832	25
...	...
R122719	63

S4 L vis. ♀ / S4 L thr. ♀
S4 L Gew. ♀



📖	Ø
R120635	3/8"
R120637	1/2"
R120942	3/4"
...	...
R120606	2"

S4 T col. ♀ / S4 T solv. ♀
S4 T kleb ♀



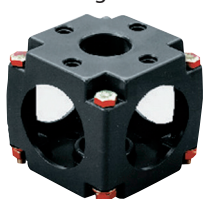
📖	Ø (mm)
R120625	16
R120627	20
R121816	25
...	...
R122716	63

S4 T vis. ♀ / S4 T thr. ♀
S4 T Gew. ♀



📖	Ø
R120634	3/8"
R120636	1/2"
R120938	3/4"
...	...
R120941	2"

Console S4 / S4 bracket
Halteung S4



📖	DN
R170042	10/15
R170022	20/25
R170001	32/40
R170018	50
-	-

Boîtier fin de course / Limit switch box
Endschaltervorrichtung



📖	Ø (mm)
R300110	50
R300120	63
-	-

Vannes PVC à membrane / PVC diaphragm valves / PVC Membranventile

T4 col. ♀ / T4 solv. ♀
T4 kleb ♀



📖	Ø (mm)
R012402	20
R012403	25
R012404	32
...	...
R012407	63

T4 col. ♂ / T4 solv. ♂
T4 Kleb ♂



📖	Ø (mm)
R122205	20
R122206	25
R122207	32
...	...
R120186	75

T4 vis. ♀ / T4 thr. ♀
T4 Gew. ♀



📖	Ø
R127130	1/2"
R127131	3/4"
R127132	1"
...	...
R127135	2"

T4 bride / T4 flange
T4 Flansch



📖	Ø (mm)
R120189	20
R120190	25
R120191	32
...	...
R120198	75

T4 fusion PE ♀ / T4 PE fusion ♀
T4 PE Fusion ♀



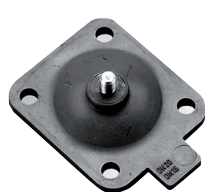
📖	Ø (mm)
R127136	20
R127137	25
R127138	32
...	...
R127141	63

T4 fusion PE ♂ / T4 PE fusion ♂
T4 PE Fusion ♂



📖	Ø (mm)
R127142	20
R127143	25
R127144	32
...	...
R127147	63

Membrane avec vis
Diaphragm with screw
Membran mit Schraube



📖	DN
R250457	15/20
R250458	25
R250459	32/40
...	...
R120934	100/125

Membrane nue
Diaphragm without screw
Membran nackt



📖	DN
R250461	15/20
R250462	25
R250463	32/40
R250464	50
-	-

Plaque de montage
Mounting plate
Montageplatte



📖	↑ (mm) - DN
R101256	16 - 10/20/25
R101255	23 - 15/20/25
R101257	3 - 15/20/25
...	...
R101260	7 - 32/40/50

Vannes également disponibles en matériau PP ou PVDF
Valves also available made of PP or PVDF
Ventile auch erhältlich aus PP oder PVDF

Vannes à opercule / Gate valves / Válvulas de compuerta

Vanne à siège incliné PVC
PVC slanted seat valve
PVC Schrägsitzventile



	Ø (mm)
R013850	16
R013851	20
R013852	25
...	...
R013856	63

Vanne à siège incliné PP
PP slanted seat valve
PP Schrägsitzventile



	Ø (mm)
R013901	½"
R013902	¾"
R013903	1"
...	...
R013906	2"

Vanne à opercule PP ou PVC
PP or PVC gate valve
PP oder PVC Schieberventile



	Ø (mm)
R013801	¾"
R013802	1"
-	-

Vannes PVC papillon & guillotine / PVC butterfly & slide gate valves / PVC Absperrklappen und Keilschieber

Papillon K4
Butterfly K4
Absperrklappe K4



	Ø (mm)
R012802	63/75
R012804	90
R012805	110
...	...
R012809	250

Papillon K4 à volant
Butterfly K4 worm gear
Absperrklappe K4 mit Handrad



	Ø (mm)
R126010	75
R126011	90
R126012	110
...	...
R126014	225

Papillon S4
Butterfly S4
Absperrklappe S4



	Ø (mm)
R012790	63
R012791	75
R121919	90
...	...
R121872	225

Set contre-bride et visserie
Screw and counter-flange set
Schrauben- und Gegenflansch-Set



	Ø (mm)
R012851	75
R012852	90
R012853	110
...	...
R012859	250

Guillotine PVC col. ♀
Slide gate PVC solv. ♀
Keilschieber PVC Kleb ♀



	Ø (mm)
R270968	50
R270632	63
R270632	63
...	...
R271461	110

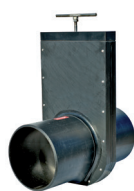
Guillotine inox. col. ♀
Slide gate st. steel solv. ♀
Keilschieber Edelstahl Kleb ♀



	Ø (mm)
R013979	90
R013980	110
R013982	160
...	...
R013985	315

Vannes PEHD Proagria / Proagria HDPE valves / Válvulas de PEAD Proagria

SVL guillotine / SVL sliding valve
SVL Handzugschieber



	DN
R014001	100
R014002	125
R014003	150
...	...
R014006	300

SVLT guillotine / SVLT sliding valve
SVLT Handzugschieber



	DN
R060101	100
R060102	125
R060103	150
...	...
R060106	300

FVL guillotine / FVL sliding valve
FVL Handzugschieber



	DN
R060201	100
R060202	125
R060203	150
...	...
R060206	300

RVL guillotine / RVL sliding valve
RVL Handzugschieber



	DN
R060301	100
R060302	125
R060303	150
...	...
R060306	300

GV guillotine / GV sliding valve
GV Handzugschieber



	DN
R060401	100
R060402	125
R060403	150
...	...
R060406	300

SVM-TG 1 à volant / SVM-TG 1 stop valve
SVM-TG 1 mit Rad



	DN
R014101	100
R014102	125
R014103	150
...	...
R014109	600

SVM-TG 2 à volant / SVM-TG 2 stop valve
SVM-TG 2 mit Rad



	DN
R060501	700
R060502	800
R060503	900
R060504	1000
R060505	1200

RVM-TG à volant / RVM-TG stop valve
RVM-TG mit Rad



	DN
R060601	100
R060602	125
R060603	150
...	...
R060609	600

DV papillon / DV butterfly valve
DP Absperrklappe



	DN
R060701	100
R060702	125
R060703	150
...	...
R060709	500

TV 3-voies / TV 3-ways
TV Dreiweg



	DN
R060801	100
R060802	125
R060803	150
R060804	200
-	-

TV-B 3-voies / TV-B 3-ways
TV-B Dreiweg



	DN
R060901	100
R060902	125
R060903	150
R060904	200
-	-

SPP écluse / SPP sluice gate
SPP Kanalschieber



	DN
R061001	100
R061002	125
R061003	150
-	-

SPH écluse / SPH sluice gate
SPH Kanalschieber



	DN
R061101	100
R061102	125
R061103	150
-	-

SPS-TL écluse / SPS-TL sluice gate
SPS-TL Kanalschieber



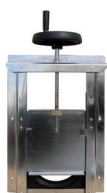
	DN
R014201	200
R014202	250
R014203	300
...	...
R014206	600

SPS-RTL écluse / SPS-RTL sluice gate
SPS-RTL Kanalschieber



	DN
R061201	200
R061202	250
R061203	300
...	...
R061206	600

SPS-TG déversoir / SPS-TG weir gate
SPS-TG Absperrschieber



	DN
R061301	200
R061302	250
R061303	300
...	...
R061306	600

SPK-TG déversoir / SPK-TG weir gate
SPK-TG Absperrschieber



	DN
R014302	150
R014303	200
R014304	250
...	...
R014308	800

SPK-B-TG déversoir / SPK-B-TG weir gate
SPK-B-TG Absperrschieber



	DN
R061501	200
R061502	250
R061503	300
...	...
R061508	800

SPM-S-TG déversoir / SPM-S-TG weir gate
SPM-S-TG Absperrschieber



	DN
R061603	800
R061604	1000
R061605	1200
R061606	1400

SPM-H-TG déversoir / SPM-H-TG weir gate
SPM-H-TG Absperrschieber



	→↑ (mm)
R061751	630
R061752	800
R061753	1000
R061754	1200

SPM-P-TG déversoir / SPM-P-TG weir gate
SPM-P-TG Absperrschieber



	→↑ (mm)
R061703	800
R061704	1000
R061705	1200
R061706	1400

MPV-TG surverse / MPV-TG overflow gate
MPV-TG Absenschieber



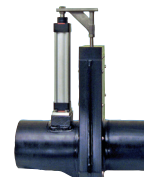
	→↑ (mm)
R061801	ⓘ
...	

KS obturateur / KS channel sluice
KS Dammbalken



	→↑ (mm)
R061901	600 × 400
R061902	500 × 600
R061903	700 × 600
R061904	900 × 600
R061905	900 × 700

Actionneurs / Actuators
Antriebe



	DESCR.
R062010	elec.
R062020	pneum.
R062030	hydr. / hidr.
-	-
-	-

SPU chasse hydraulique / SPU flushing gate
SPU Hydraulischer Antrieb



	→↑ (mm)
R062101	ⓘ
...	

ALU planches / ALU stop log
ALU Dammbalken



	→↑ (mm)
R062201	ⓘ
...	

KVR clapet à battant / KVR flap valve
KVR Rückstauklappe



	DN
R062301	100
R062302	150
-	-

KVM clapet à battant / KVM flap valve
KVM Rückstauklappe



	DN
R062401	100
R062402	125
R062403	150
-	-

KVI clapet à battant / KVI flap valve
KVI Rückstauklappe



	DN
R062501	100
R062502	150
-	-

KVF clapet à battant / KVF flap valve
KVF Rückstauklappe



	DN
R062601	100
R062602	150
-	-

OPV clapet à battant / OPV flap valve
OPV Rückstauklappe



	DN
R062701	100
R062702	150
-	-

IKV clapet à battant / IKV flap valve
IKV Rückstauklappe



	DN
R062801	100
R062802	150
-	-

IKF clapet à battant / IKF flap valve
IKF Rückstauklappe



	DN
R062901	100
R062902	150
R062903	200
-	-

Vannes de régulation / Regulation valves / Válvulas de regulación

Vanne à contrôle hydraulique "tout ou rien"
On/Off hydraulic control valve
Hydraulisches Regelventil auf/zu



	DN
R070101	40
R070102	50
R070103	65
...	...
R070106	150

Régulateur de pression à action directe
Direct acting pressure reducing valve
Direktion Druckreduzierer



	Ø
R070201	¾"
R070202	1"
R070203	1" ½
-	-

Réducteur de pression
Pressure reducing valve
Druckreduzierer



	DN
R070301	40
R070302	50
R070303	65
...	...
R070306	150

Réducteur et stabilisateur de pression
Pressure reducing and sustaining valve
Druckreduzierung und Druckhalterung



	DN
R070401	40
R070402	50
R070403	65
...	...
R070406	150

Stabilisateur de pression
Pressure sustaining valve
Druckhalterung



	DN
R070501	40
R070502	50
R070503	65
...	...
R070506	150

Vanne de décharge de pression
Pressure relief valve
Druckentlastungsventil



	DN
R070601	40
R070602	50
R070603	65
...	...
R070606	150

Vanne de contrôle de débit
Flow control valve
Durchflussregelventil



	DN
R070701	40
R070702	50
R070703	65
...	...
R070706	150

Contrôleur de débit, réducteur de pression
Flow control and pressure reducing valve
Durchflussregelventil & Druckreduzierung



	DN
R070801	40
R070802	50
R070803	65
...	...
R070806	150

Vanne hydraulique de contre-lavage
Filter backwash hydraulic valve
Hydraulisches Rückspülventil



	DN
R070901	50 × 50
R070902	80 × 80
R070903	80 × 80 / 50
-	-

*Tableau de correspondance des diamètres de tuyauterie PVC page 201 / PVC piping diameter conversion table page 201
Umrechnungstabelle für PVC-Rohrleitungen Seite 201*

Vannes mélangeuses & diviseuses / Mixing valves / Misch- und Teilungsventile

PVC / PVC
PVC



	Ø
R071601	2"
R071602	3"
-	-

Fonte / Cast iron
Eisen



	DN
R071701	15
R071702	20
R071703	25
...	...
R071709	100

Bronze / Bronze
Bronze



	Ø (mm)
R071801	15
R071802	20
R071803	25
...	...
R071806	50

Vannes PVC à boisseau sphérique à actionneur électrique / Electric actuated PVC ball valves / PVC Kugelhahnventile mit elektrischem Antrieb

S4 2x col. ♀ 24V / S4 2x solv. ♀ 24V
S4 2x Kleb ♀ 24V



📖	Ø (mm)
R125549	16
R125550	20
R125551	25
...	...
R122223	110

S4 2x vis. ♀ 24V / S4 2x thr. ♀ 24V
S4 2x Gew. ♀ 24V



📖	Ø (mm)
R122678	16
R127246	20
R127247	25
...	...
R127333	90

S4 2x bride 24V / S4 2x flange 24V
S4 2x Flansch 24V



📖	Ø (mm)
R127043	16
R127044	20
R122787	25
...	...
R127340	110

S4 2x col. ♀ 230V / S4 2x solv. ♀ 230V
S4 2x Kleb ♀ 230V



📖	Ø (mm)
R125549	16
R125550	20
R125551	25
...	...
R122225	110

S4 2x vis. ♀ 230V / S4 2x thr. ♀ 230V
S4 2x Gew. ♀ 230V



📖	Ø (mm)
R122678	16
R127246	20
R127247	25
...	...
R127353	90

S4 2x bride 230V / S4 2x flange 230V
S4 2x Flansch 230V



📖	Ø (mm)
R127043	16
R127044	20
R122787	25
...	...
R127360	110

S4 3x T col. ♀ 24V
S4 3x T solv. ♀ 24V
S4 3x T Kleb ♀ 24V



📖	Ø (mm)
R125558	16
R125559	20
R125560	25
...	...
R122231	63

S4 3x L col. ♀ 230V
S4 3x L solv. ♀ 230V
S4 3x L Kleb ♀ 230V



📖	Ø (mm)
R125558	16
R125559	20
R125560	25
...	...
R121995	63

Actionneur ER Premier
Actuator ER Premier
Antrieb ER Premier



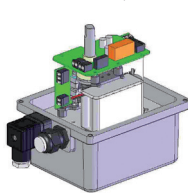
📖	ε(Nm) / ⚡ (V)
R301001	20 / 230
R301002	20 / 24
...	...
R301005	100 / 230
R301006	100 / 24

Actionneur ER Plus
Actuator ER Plus
Antrieb ER Plus



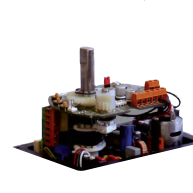
📖	ε(Nm) / ⚡ (V)
R301101	10 / 230
R301102	10 / 24
...	...
R301111	100 / 230
R301112	100 / 24

Bloc de sécurité ER Plus Failsafe
Security system ER Plus Failsafe
Sicherheitssystem ER Plus Failsafe



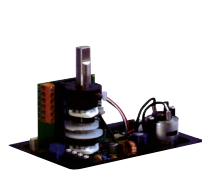
📖	DESCR.
R301201	Failsafe
-	-

Positionneur ER Plus Posi
Positioning system ER Plus Posi
Einstellungssystem ER Plus Posi



📖	DESCR.
R301301	Posi
-	-

Option 3 positions ER Plus GF3
Option 3 positions ER Plus GF3
Option 3 Stellungen ER Plus GF3



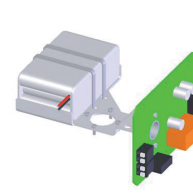
📖	DESCR.
R301401	GF3
-	-

Actionneur VR-VS
Actuator VR-VS
Antrieb VR-VS



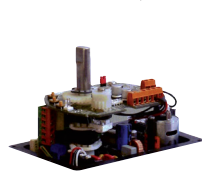
📖	ε(Nm) / ⚡ (V)
R301501	25 / 400
R301502	25 / 230
R301503	25 / 24
...	...
R301522	1000 / 230

Bloc de sécurité VR-VS Failsafe
Security system VR-VS Failsafe
Sicherheitssystem VR-VS Failsafe



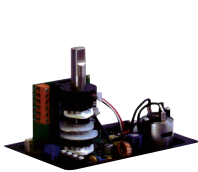
📖	DESCR.
R301601	Failsafe
-	-

Positionneur VR-VS Posi
Positioning system VR-VS Posi
Einstellungssystem VR-VS Posi



📖	DESCR.
R301701	Posi
-	-

Option 3 positions VR-VS Plus GF3
Option 3 positions VR-VS Plus GF3
Option 3 Stellungen VR-VS Plus GF3



📖	DESCR.
R301801	GF3
-	-

Set d'adaptation vanne électrique
Electric adapter set
Adapter für Elektroventil



📖	DN
R122103	10/15
R122083	20/25
R121985	32
...	...
R122065	80

**Vannes PVC à boisseau sphérique à actionneur pneumatique / Pneumatic actuated PVC ball valves /
Válvulas de PVC de bola automáticas neumáticas**

S4 2x col. ♀ NF / S4 2x solv. ♀ NC
S4 2x Kleb ♀ NG



📖	Ø (mm)
R122408	16
R122409	20
R122410	25
...	...
R122417	110

S4 2x vis. ♀ NF / S4 2x thr. ♀ NC
S4 2x Gew. ♀ NG



📖	Ø
R127432	3/8"
R127433	1/2"
R127434	3/4"
...	...
R127440	3"

S4 2x bride NF / S4 2x flange NC
S4 2x Flansch NG



📖	Ø (mm)
R127452	16
R127453	20
R127454	25
...	...
R127461	110

S4 2x col. ♀ NO / S4 2x solv. ♀ NO
S4 2x Kleb ♀ NO



📖	Ø (mm)
R124470	16
R124471	20
R124472	25
...	...
R124479	110

S4 2x vis. ♀ NO / S4 2x thr. ♀ NO
S4 2x Gew. ♀ NO



📖	Ø (mm)
R127513	3/8"
R127514	1/2"
R127515	3/4"
...	...
R127521	3"

S4 2x bride NO / S4 2x flange NO
S4 2x Flansch NO



📖	Ø (mm)
R127533	16
R127534	20
R127535	25
...	...
R127542	110

S4 2x col. ♀ DA / S4 2x solv. ♀ DA
S4 2x Kleb ♀ DA



📖	Ø (mm)
R122418	16
R122419	20
R122420	25
...	...
R122427	110

S4 2x vis. ♀ DA / S4 2x thr. ♀ DA
S4 2x Gew. ♀ DA



📖	Ø (mm)
R127574	3/8"
R127575	1/2"
R127576	3/4"
...	...
R127582	3"

S4 2x bride DA / S4 2x flange DA
S4 2x Flansch DA



📖	Ø (mm)
R127594	16
R127595	20
R127596	25
...	...
R127603	110

S4 3x L col. ♀ NF / S4 3x L solv. ♀ NC
S4 3x L Kleb ♀ NG



📖	Ø (mm)
R125762	16
R125763	20
R125764	25
...	...
R125768	63

S4 3x L col. ♀ NO / S4 3x L solv. ♀ NO
S4 3x L Kleb ♀ NO



📖	Ø (mm)
R126716	16
R126717	20
R126718	25
...	...
R126722	63

S4 3x L col. ♀ DA / S4 3x L solv. ♀ DA
S4 3x L Kleb ♀ DA



📖	Ø (mm)
R126700	16
R126701	20
R126702	25
...	...
R126706	63

S4 3x T col. ♀ NF / S4 3x T solv. ♀ NC
S4 3x T Kleb ♀ NG



📖	Ø (mm)
R126713	16
R124998	20
R124999	25
...	...
R125321	63

S4 3x T col. ♀ NO / S4 3x T solv. ♀ NO
S4 3x T Kleb ♀ NO



📖	Ø (mm)
R126723	16
R126724	20
R126725	25
...	...
R126729	63

S4 3x T col. ♀ DA / S4 3x T solv. ♀ DA
S4 3x T Kleb ♀ DA



📖	Ø (mm)
R126707	16
R126708	20
R125317	25
...	...
R126712	63

Boîtier fin de course
Limit switch box
Endschaltvorrichtung



📖	DESCR.
R250914	UT
-	-

Electrovanne Namur
Namur solenoid valve
Magnetventil Namur



📖	↗
R250062	24 VDC
R250061	230 VAC
-	-

Set d'adaptation vanne pneumatique
Pneumatic adapter set
Adaptater für pneumatisches Ventil



📖	Ø (mm)
R122103	10/15
R122083	20/25
R121985	32
...	...
R122065	80

Note / Note / Anmerkung :

NF / NC / NG = normalement fermé / normally closed / normalerweise geschlossen

NO / NO / NO = normalement ouvert / normally open / normalerweise offen

DA / DA / DA = double effet / double acting / Doppelaktion

Vannes PVC à membrane à actionneur pneumatique / Pneumatic actuated PVC diaphragm valves / PVC Membranventile mit pneumatischem Antrieb

T4 2x col. ♀ NF / T4 2x solv. ♀ NC
T4 2x Kleb ♀ NG



📖	Ø (mm)
R125616	20
R125619	25
R125622	32
...	...
R125631	63

T4 2x col. ♂ NF / T4 2x solv. ♂ NC
T4 2x Kleb ♂ NG



📖	Ø (mm)
R125588	20
R125591	25
R125594	32
...	...
R125603	63

T4 2x bride NF / T4 2x flange NC
T4 2x Flansch NG



📖	Ø (mm)
R125652	20
R125655	25
R125658	32
...	...
R125667	63

T4 2x col. ♀ NO / T4 2x solv. ♀ NO
T4 2x Kleb ♀ NO



📖	Ø (mm)
R125642	20
R125644	25
R125645	32
...	...
R125648	63

T4 2x col. ♂ NO / T4 2x solv. ♂ NO
T4 2x Kleb ♂ NO



📖	Ø (mm)
R126051	20
R126053	25
R126055	32
...	...
R126061	63

T4 2x bride NO / T4 2x flange NO
T4 2x Flansch NO



📖	Ø (mm)
R126086	20
R126088	25
R126090	32
...	...
R126096	63

T4 2x col. ♀ DA / T4 2x solv. ♀ DA
T4 2x Kleb ♀ DA



📖	Ø (mm)
R125635	20
R125636	25
R125637	32
...	...
R125640	63

T4 2x col. ♂ DA / T4 2x solv. ♂ DA
T4 2x Kleb ♂ DA



📖	Ø (mm)
R125607	20
R125608	25
R125609	32
...	...
R125612	63

T4 2x bride DA / T4 2x flange DA
T4 2x Flansch DA



📖	Ø (mm)
R125671	20
R125672	25
R125673	32
...	...
R125676	63

T4 2x col. ♀ Comp. Pos. 4-20 mA
T4 2x solv. ♀ Comp. Pos. 4-20 mA
T4 2x Kleb ♀ Comp. Pos. 4-20 mA



📖	Ø (mm)
R126651	20
R126652	25
R126653	32
...	...
R126656	63

Boîtier fin de course
Limit switch box
Endschaltervorrichtung



📖	⚡
R250908	12-48 VAC/DC
R250910	110-250 VAC/DC
R250912	10-30 VDC

Electrovanne Namur
Namur solenoid valve
Magneventil Namur



📖	Ø (mm)
R250062	24 VDC
R250061	230 VAC
-	-

T4 2x col. ♀ action directe
T4 2x solv. ♀ direct acting
T4 2x Kleb ♀ Direktaktion



📖	Ø (mm)
R122816	20
R122817	25
R122818	32
...	...
R122821	63

T4 2x col. ♂ action directe
T4 2x solv. ♂ direct acting
T4 2x Kleb ♂ Direktaktion



📖	Ø (mm)
R122822	20
R122823	25
R122824	32
...	...
R122827	63

Plaque de montage
Mounting plate
Montageplatte



📖	↑ (mm) - DN
R101256	16 - 10/20/25
R101255	23 - 15/20/25
R101257	3 - 15/20/25
...	...
R101260	7 - 32/40/50

Vannes PVC papillon à actionneur électrique / Electric actuated PVC butterfly valves / PVC Absperrklappenventile mit elektrischem Antrieb

K4 24V / K4 24V
K4 24V



📖	DN
R301901	40
R301902	50
R301903	65
...	...
R301911	300

K4 230V / K4 230V
K4 230V



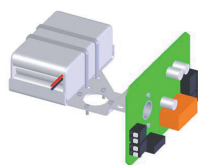
📖	DN
R302001	40
R302002	50
R302003	65
...	...
R302011	300

K4 400V / K4 400V
K4 400V



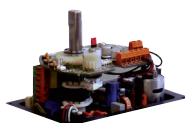
📖	DN
R302101	40
R302102	50
R302103	65
...	...
R302111	300

Bloc de sécurité VR-VS Failsafe
Security system VR-VS Failsafe
Sicherheitssystem VR-VS Failsafe



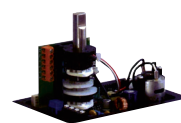
📖	DESCR.
R301601	Failsafe
-	-

Positionneur VR-VS Posi
Positioning system VR-VS Posi
Einstellungssystem VR-VS Posi



📖	DESCR.
R301701	Posi
-	-

Option 3 positions VR-VS Plus GF3
Option 3 positions VR-VS Plus GF3
Option 3 Stellungen VR-VS Plus GF3



📖	DESCR.
R301801	GF3
-	-

Vannes PVC papillon à actionneur pneumatique / Pneumatic actuated PVC butterfly valves / PVC Absperrklappenventile mit pneumatischem Antrieb

K4 NF / K4 NC
K4 NG



📖	Ø (mm)
R125885	75
R125886	90
R125887	110
...	...
R125889	225

K4 NO / K4 NO
K4 NO



📖	Ø (mm)
R125935	75
R125936	90
R125937	110
...	...
R125939	225

K4 DA / K4 DA
K4 DA



📖	Ø (mm)
R125910	75
R125911	90
R125912	110
...	...
R125914	225

S4 NF / S4 NC
S4 NG



📖	Ø (mm)
R122932	90
R122933	110
R122934	140
...	...
R122936	225

S4 NO / S4 NO
S4 NO



📖	Ø (mm)
R122339	90
R122340	110
R122342	140
...	...
R122341	225

S4 DA / S4 DA
S4 DA



📖	Ø (mm)
R122331	90
R122332	110
R122337	140
...	...
R122338	225

Boîtier fin de course
Limit switch box
Endschaltvorrichtung



📖	Ø (mm)
R250914	UT
-	-

Electrovanne Namur
Namur solenoid valve
Magneventil Namur



📖	Ø (mm)
R250062	24 VDC
R250061	230 VAC
-	-

Set d'adaptation vanne pneumatique
Pneumatic adapter set
Adaptater für pneumatisches Ventil



📖	Ø (mm)
R122103	10/15
R122083	20/25
R121985	32
...	...
R122065	80

Note / Note / Anmerkung :

NF / NC / NG = normalement fermé / normally closed / normalerweise geschlossen

NO / NO / NO = normalement ouvert / normally open / normalerweise offen

DA / DA / DA = double effet / double acting / Doppelaktion

Electrovannes / Solenoid valves / Magnetventile

Action directe - Plongeur
Direct acting - Plunger
Direktwirkend - Hubanker



📖	DESCR.
R072501	6011
R072502	6013
R072503	0255
...	...
R072509	0355

Action directe - Armature battante
Direct acting - Pivot
Direktwirkend - Klappanker



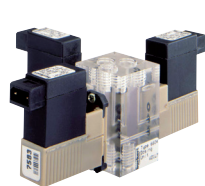
📖	DESCR.
R072601	0124
R072602	0330
R072603	0331
R072604	0121
-	-

Action directe - Balancier
Direct acting - Rocker
Direktwirkend - Wippen



📖	DESCR.
R072701	6126
R072702	6128
R072703	0127
...	...
R072706	6106

Action directe - Flipper
Direct acting - Flipper
Direktwirkend - Clapeta oscilante



	DESCR.
R072801	6124
R072802	6144
R072803	6650
R072804	6604
-	-

Commande assistée - Membrane
Servo-assisted - Plunger & diaphragm
Servogesteuert - Membran



	DESCR.
R072901	5281
R072902	5282
R072903	6211
R072904	6227
R072905	6228

Commande assistée - Piston
Servo-assisted - Piston
Servogesteuert - Kolben



	DESCR.
R073001	0406
R073002	5404
R073003	6221
...	...
R073006	0344

Commande assistée - Pilote & membrane
Servo-assisted - Isolated pilot & diaphragm
Servogesteuert - Pilot & Membran



	DESCR.
R073101	5282
R073102	0142
R073103	6642
R073104	6212
-	-

Commande assistée - Membrane couplée
Servo-assisted - Spring coupled
Servogesteuert - Federgekoppelte Mb.



	DESCR.
R073201	6213
-	-

Commande assistée - Piston couplé
Servo-assisted - Hard coupled
Servogesteuert - Festgekoppelte Mb.



	DESCR.
R073301	6240
R073302	0290
R073303	0407
-	-

Commande temporisée
Timer control
Zeitsteuerung



	DESCR.
R073401	1078-1
R073402	1078-2
-	-

Commande proportionnelle
Proportional control
Proportionalsteuerung



	DESCR.
R073501	8605
-	-

Oxygène
Oxygen
Sauerstoff

G 1/8" - IP67
P: 0,2... 7 bar



	DESCR.
E033010	24 VDC ∅∅
E033020	230 V ∅∅
E033030	24 VDC ∅∅
E033040	24 VDC ∅∅
-	-

Robinets pour instrumentation / Small valves / Laborventile

PVC laboratoire / PVC lab
PVC labor



	∅ (mm)
R122353	1/4" x 1/4"
R122751	1/4" x 3/8"
-	-

PP-PE 2x cannelé / PP-PE 2x hose barb
PP-PE 2x Tülle



	∅ (mm)
R074001	4
R074002	5-7
R074003	7-9
R074004	9-11
R074005	11-13

PP-PE 3x cannelé / PP-PE 3x hose barb
PP-PE 3x Tülle



	∅ (mm)
-	-
R074102	5-7
R074103	7-9
R074104	9-11
R074105	11-13

PP-PE 2x cannelé / PP-PE 2x hose barb
PP-PE 2x Tülle



	∅ (mm)
R074201	12
R074202	16
R074203	20
R074204	25
-	-

PP-PE cann. x vis. ∅ / PP-PE barb x thr. ∅
PP-PE Tülle x Gew. ∅



	∅ (mm)
R074301	12 x 1/2"
R074302	12 x 3/4"
R074303	16 x 1/2"
...	...
R074308	25 x 3/4"

PP-PE cann. x vis. ∅ / PP-PE barb x thr. ∅
PP-PE Tülle x Gew. ∅



	∅ (mm)
R074401	16 x 1/2"
R074402	16 x 3/4"
R074403	20 x 1/2"
...	...
R074406	25 x 3/4"

PP-PE vis. ∅ x vis. ∅ / PP-PE thr. ∅ x thr. ∅
PP-PE Gew. ∅ x Gew. ∅



	∅ (mm)
R074501	1/2"
R074502	3/4"
-	-

PP-PE vis. ∅ x vis. ∅ / PP-PE thr. ∅ x thr. ∅
PP-PE Gew. ∅ x Gew. ∅



	∅ (mm)
R074601	1/2"
R074602	3/4"
-	-

PP-PE vis. ∅ x vis. ∅ / PP-PE thr. ∅ x thr. ∅
PP-PE Gew. ∅ x Gew. ∅



	∅ (mm)
R074701	1/2"
R074702	3/4"
-	-

Laiton - Aquarium / Brass - Aquarium
Messing - Aquarium



📖	Ø (mm)
R074801	4 × 4
R074802	4-5 × M5
R074803	4 × 4 × 4
-	-

Laiton - Standard / Brass - Standard
Messing - Standard



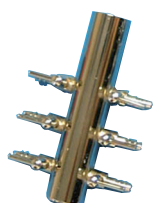
📖	Ø (mm)
R074901	1/8"
...	...
R074905	3/4"
R074921	1/8"
...	...
R074925	3/4"

Distributeur (plastique) / Distributor (plastic)
Verteiler (Kunststoff)



📖	Ø (mm)
R075051	6×
R075052	8×
R075053	10×
...	...
R075056	20×

Distributeur LP / Manifold LP
Verteiler LP



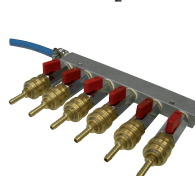
📖	DESCR.
R075101	2×
R075102	3×
R075103	4×
...	...
R075108	18×

Distributeur HP / Manifold HP
Verteiler HP



📖	DESCR.
R075201	2×
R075202	3×
R075203	4×
R075204	5×
-	-

Distributeur O₂ / O₂ Manifold
Verteiler O₂



📖	Ø (mm)
R075301	2×
R075302	3×
R075303	4×
...	...
R075307	8×

Vannes à flotteur / Float valves / Schwimmerventile

Laiton / Brass
Messing



📖	Ø (mm)
R076001	3/8"
R076002	1/2"
R076003	3/4"
...	...
R076007	2"

Plastique quick-stop / Plastic quick-stop
Kunststoff quick-stop



📖	Ø (mm)
R076100	1/2"
R076101	3/4"
R076102	1"
R076103	1" 1/2"
-	-

Plastique auto-lock / Plastic auto-lock
Kunststoff auto-lock



📖	Ø (mm)
R076201	1/2"
R076202	3/4"
R076203	1"
...	...
R076207	2" 1/2"

Clapets & Crépines / Check valves & Strainers / Rückschlagventile & Saugkörbe

S4 Battant / S4 Wafer
S4 Klappe



📖	Ø (mm)
R270001	40
R270196	50
R270036	63
...	...
R270504	560

S4 Battant à ressort / S4 Wafer with spring
S4 Klappe mit Feder



📖	Ø (mm)
R270003	40
R270198	50
R270037	63
...	...
R270117	315

K4 Battant, indicateur / K4 Wafer, indicator
K4 Klappe mit Opt. Positionsanzeige



📖	Ø (mm)
R125804	75
R125805	90
R125806	110
...	...
R125809	280

K6 Battant à ressort / K6 Wafer with spring
K6 Klappe mit Feder



📖	Ø (mm)
R129078	50
R129079	63
R129080	75
...	...
R129086	315

S4 Cône col. ♀ / S4 Cone solv. ♀
S4 Konus Kleb ♀



📖	Ø (mm)
R012501	16
R012502	20
R012503	25
...	...
R012510	110

S4 Cône vis. ♀ / S4 Cone thr. ♀
S4 Konus Gew. ♀



📖	Ø
R121186	3/8"
R121188	1/2"
R121190	3/4"
...	...
R121202	3"

Battant, horizontal / Wafer, horizontal
Klappe, waagrecht



📖	Ø (mm)
R077601	32
R077602	40
R077603	50
-	-

S4 Pied col. ♀ / S4 Foot solv. ♀
S4 Fuß Kleb ♀



📖	Ø (mm)
R121323	16
R121329	20
R121335	25
...	...
R122389	110

S4 Pied vis. ♀ / S4 Foot thr. ♀
S4 Fuß Kleb ♀



📖	Ø
R121321	3/8"
R121327	1/2"
R121333	3/4"
...	...
R121371	3"

☞ S4 cône également disponible en fusion PE / S4 cone also available as PE fusion / S4 Konus auch erhältlich aus PE Fusion

Clapet Y col. ♀ / Y check valve solv. ♀
Rückschlagventile Y Kleb ♀



📖	Ø (mm)
R077701	16
R077702	20
R077703	25
...	...
R077710	110

Clapet Y vis. ♂ / Y check valve thr. ♂
Rückschlagventile Y Gew. ♂



📖	Ø
R077801	¾"
R077802	1"
R077803	1" ¼
R077804	1" ½
R077805	2"

S4 Mise à l'air col. ♀ / S4 Aerating solv. ♀
S4 Be- und Entlüftungsventil Kleb ♀



📖	Ø (mm)
R121262	16
R121264	20
R121266	25
...	...
R122391	110

S4 Mise à l'air vis. ♀
S4 Aerating thr. ♀
S4 Be- und Entlüftungsventil Gew. ♀



📖	Ø
R121280	¾"
R121282	½"
R121284	¾"
...	...
R121296	3"

Clapet air (soufflante)
Air check valve (blower)
Luftrückschlagventile aire (Gebläse)



📖	Ø
E009874	1"
E009875	1" ¼
E009876	1" ½
...	...
E009879	4"

Clapet acier inoxydable & PTFE
Stainless steel & PTFE check valve
Rückschlagventile aus Edelstahl & PTFE



📖	Ø
R077101	¼"
R077102	¾"
R077103	½"
...	...
R077108	2"

Clapet aquarium / Aquarium check valve
Rückschlagventile Aquarium



📖	Ø (mm)
R077001	4
-	-

Crépine acier inox. / St. steel strainer
Saugkörbe aus Edelstahl



📖	Ø
R077301	¾"
R077302	½"
R077303	¾"
...	...
R077310	4"

Crépine PVC / PVC strainer
Saugkörbe aus PVC



📖	Ø (mm)
R077501	20
R077502	25
R077503	32
...	...
R077509	110

🌀 *Crépines de pied : avec ou sans clapet, tous matériaux disponibles / Foot strainers : with or without check valve, all materials available / Saugkörbe : mit oder ohne Rückschlag, alle Materialien erhältlich*

Filtres en ligne / In-line filters / Inline Filter

S4 plastique col. ♀ / S4 plastic solv. ♀
S4 Kunststoff Kleb ♀



📖	Ø (mm)
R121701	16
R121702	20
R121703	25
...	...
R121710	110

S4 plastique vis. ♀ / S4 plastic thr. ♀
S4 Kunststoff Gew. ♀



📖	Ø (mm)
R121721	¾"
R121722	½"
R121723	¾"
...	...
R121758	3"

S4 métal col. ♀ / S4 metal solv. ♀
S4 Metall Kleb ♀



📖	Ø (mm)
R124707	16
R124708	20
R124709	25
...	...
R124716	110

S4 métal vis. ♀ / S4 metal thr. ♀
S4 Metall Gew. ♀



📖	Ø (mm)
R124717	¾"
R124718	½"
R124719	¾"
...	...
R124725	3"

Cartouche / Insert
Sieb



📖	■ (mm)
R250606	0,50
...	...
R250614	0,75
...	...
R250622	1,00

Filtre Y / Y-filter
Y Filter



📖	Ø (mm)
R078101	20
R078102	25
R078103	32
...	...
R078109	90

Filtre Y, transparent / Y-filter, clear
Y Filter, durchsichtig



📖	Ø (mm)
R078201	20
R078202	25
R078203	32
...	...
R078209	90

Cartouche, plastique / Insert, plastic
Sieb, Kunststoff



📖	■ (mm)
R078301	0,5
R078321	0,8
R078341	1,4
R078361	2,2
...	...

Cartouche, métal / Insert, metal
Sieb, Metall
(AISI 316 - ■ 0,5 mm)



📖	Ø (mm)
R078401	20
R078402	25
R078403	32
...	...
R078408	90

Mélangeurs statiques / Static mixers /
Statische Mischer

☞ page 50 / page 50 / Seite 50

Débitmètres à flotteur / Variable area flowmeters /
Durchflussmengenmesser

💡 Tous les débitmètres M123, M335 et M350 sont disponibles en option avec flotteur magnétique
All flowmeters M123, M335 and M350 are available with magnetic float as an option
Alle Durchflussmesser M123, M335 und M350 erhältlich in Option mit Magnetschwimmer

M123 PSU / M123 PSU
M123 PSU



📖	Q (lph)
R273471	1,5-15
R273472	2,5-25
R273473	5-50
...	...
R273481	100-1000

M123 PVC / M123 PVC
M123 PVC



📖	Q (lph)
R274161	1,5-15
R274162	2,5-25
R274218	5-50
...	...
R274171	100-1000

M335 PA / M335 PA
M335 PA



📖	Q (lph)
R277084	50-500
R277085	100-1000
R277086	150-1500
...	...
R277096	8000-60000

M335 PSU / M335 PSU
M335 PSU



📖	Q (lph)
R277162	50-500
R277163	100-1000
R277164	150-1500
...	...
R277174	8000-60000

M335 PVC / M335 PVC
M335 PVC



📖	Q (lph)
R277240	50-500
R277241	100-1000
R277242	150-1500
...	...
R277252	8000-60000

M350 PA / M350 PA
M350 PA



📖	Q (lph)
R279700	50-500
R279701	100-1000
R279709	150-1500
...	...
R279712	8000-60000

M350 PSU / M350 PSU
M350 PSU



📖	Q (lph)
R279778	50-500
R279779	100-1000
R279780	150-1500
...	...
R279790	8000-60000

M350 PVC / M350 PVC
M350 PVC



📖	Q (lph)
R279856	50-500
R279857	100-1000
R279858	150-1500
...	...
R279868	8000-60000

Echelle spéciale / Special scale
Spezialskala



📖	Pair (bar)
R300201	0
R300202	1
R300203	2
...	...
R300204	8

Contacteurs de seuil
Limit contacts
Grenzwertkontakt



📖	DESCR.
R277287	min.
R277288	max.
-	-

Capteur de mesure
Measuring sensor
Messwertensensor



📖	DESCR.
R277463	4-20 mA
-	-

Débitmètre analyse
Analysis flow tube meter
Durchflussmesser für Analyse



📖	Q (lpm)
R079101	0,006
...	...
R079150	62,1
R079201	0,019
...	...
R079245	62,6

Contacteur optique
Optical sensor switch
Optischer Grenzwertkontakt



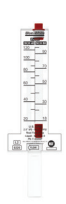
📖	Ø (mm)
R079301	1× [65 mm]
R079302	1× [150 mm]
R079303	2× [150 mm]
-	-

Débitmètre multiple
Multiple flow tube meters
Multiples Durchflussmesser



📖	DESCR.
R079401	2×
R079402	3×
R079403	5×
R079404	5×
R079405	6×

Pitot
Pitot
Pitot



📖	Q (GPM)
R079601	5-35
R079602	9-50
R079603	10-70
...	...
R079609	300-2200

☞ Débitlitres oxygène standard page 48 / Standard oxygen flowmeters page 48 / Standard Durchflussmengenregler für Sauerstoff Seite 48

également disponible : débitmètres à cadran (grand débit), débitmètres à cible (horizontal), AW-Lake (multi-positions & bi-directionnels)
also available : flowmeters with indicator box (high flow), target flowmeters (horizontal), AW-Lake (multi-position & bi-directional)

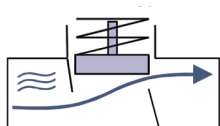
auch erhältlich : Modelle mit Anzeiger (hoher Durchfluss), Scheibedurchflussmesser (waagrecht), AW-Lake (mehrere Positionen & bidirektional)

**Détecteurs de débit & Débitmètres / Flow switches & Flowmeters /
Durchflussanzeiger und Durchflussmesser**

Piston vanne
Piston valve design
Kolben, Ventilbauweise



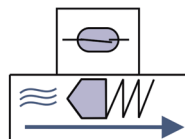
R080100



Piston en ligne
Piston inline design
Kolben, Inlinebauweise



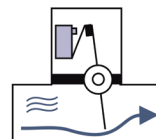
R080200



Clapet - contacteur
Paddle - switch
Paddel - Schalter



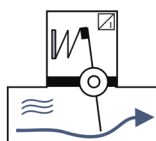
R080300



Clapet - mesure
Paddle - meter
Paddel - Messung



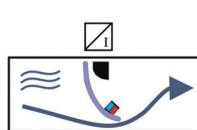
R080400



Clapet dynamique
Dynamic flap
Dynamische Blende



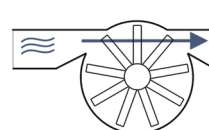
R080500



Rotor
Rotor
Rotor



R080600



Turbine
Turbine
Turbine



R080700



Vis
Spindle screw
Spindel (Schraube)



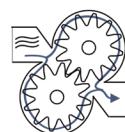
R080800



Engrenages
Gear wheel
Zahnrad



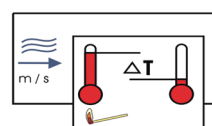
R080900



Calorimétrie
Calorimetric
Kalorimetrisch



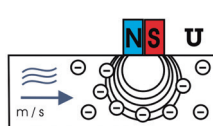
R081000



Induction magnétique
Magnetic inductive
Magnetisch Induktiv



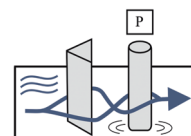
R081100



Vortex
Vortex
Vortex



R081200



Ultrasons
Ultrasonic
Ultraschall



R081300



Manchette transparente
Sight glass
Sichtglas



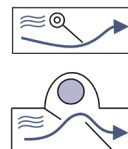
R081400



Indicateurs de débit Palette & Sphère
Flap & Sphere flow indicators
Schauglas, Klappe, Kugel



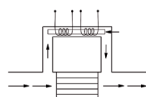
R081500



Débitmètre massique
Mass flowmeter
Massendurchflussmesser



R081600



Orifice limiteur
Orifice limiter
Durchflussbegrenzer



R081700



Appareil portable, courantomètre
Hand-held device, current-meter
Handmessgeräte, Strömungsmesser



R081800

courantomètres
(hydrologie) / current-
meter (hydrology) /
Strömungsmesser
(Hydrologie):
p. 160

Régulateurs & Sondes de niveau / Level switches & sensors /
Niveauschalter & Niveaumesser

Poire SKW PVC / Pear SKW PVC
Birne SKW PVC



	ⓘ	∩ (m)
	R082501	3
	R082502	5
	R082503	10
	R082504	20
	-	-

Poire SSW NEO / Pear SSW NEO
Birne SSW NEO



	ⓘ	∩ (m)
	R082602	5
	R082603	10
	-	-

Poire SSWE NEO / Pear SSWE NEO
Birne SSWE NEO



	ⓘ	∩ (m)
	R082701	10
	R082702	20
	-	-

Contacteur à flotteur pour fond de cale
Bilge float switch
Bilgeschalter



	ⓘ	∩ (A)
	R082801	15
	-	-

Contacteur à flotteur, vertical
Level float switch, vertical
Schwimmerschalter, senkrecht



	ⓘ	∩ (mm)
	R082901	40
	R082902	250
	R082903	500
	R082904	750
	R082905	1000

Contacteur à flotteur, horizontal
Level float switch, horizontal
Schwimmerschalter, waagrecht



	ⓘ	DESCR.
	R083001	RWI
	R083002	L25-L26
	-	-

Contacteur de niveau infrarouge
Level switch, infrared
Niveauschalter, infrarot



	ⓘ	∩
	R083101	5V - T
	R083102	24V - T
	R083103	5V - N
	R083104	24V - N
	-	-

Contacteur de niveau résistif
Conductive level limit switch
Niveauschalter, Widerstand



	ⓘ	∩ (mm)
	R083201	3× 150
	R083202	3× 1000
	-	-

Contacteur de niveau à vibration
Vibration level limit switch
Vibrationsniveauschalter



	ⓘ	DESCR.
	R083301	V551
	-	-

Contacteur de niveau capacitif
Capacitive level limit switch
Niveauschalter, Leistung



	ⓘ	DESCR.
	R083401	rev.
	R083402	std.
	-	-

Radar à ondes guidées
Guided wave radar level sensor
Geführter Radar-Füllstandsensor



	ⓘ	DESCR.
	R083590	IFM
	-	-

Capteur de pression hydrostatique
Hydrostatic pressure sensor
Hidrostatishedrucksensor



	ⓘ	∩ (m)
	R083601	1,0
	R083602	2,5
	R083603	4,0

	R083613	250

Capteur de niveau à ultrasons
Ultrasound sensor
Ultraschallniveaumesser



	ⓘ	∩ (mm)
	R083701	LS20
	R083702	EL
	R083703	OMNI-L
	-	-

Capteur de niveau sur flotteur
Float level sensor
Schwimmerniveaumesser



	ⓘ	∩ (mm)
	R083801	250
	R083802	500
	R083803	750

	R083806	2000

Jauge de niveau hydrostatique
Hydrostatic tank content gauge
Hidrostatisheniveaumesser



	ⓘ	DESCR.
	R083901	☞
	R083902	∩
	-	-

Capteur de niveau capacitif
Capacitive level sensor
Leistungsniveaumesser



	ⓘ	∩ (mm)
	R084001	500
	R084002	800
	R084003	1000

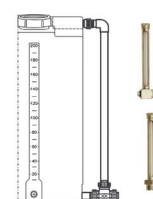
	R084006	2500

Capteur de niveau calorimétrique
Calorimetric level sensor
Kalorimetrishesniveaumesser



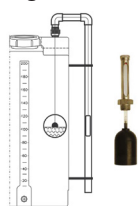
	ⓘ	∩ (mm)
	R084101	100
	R084102	150
	R084103	200
	-	-

Echelle de visualisation sans flotteur
Sight glass without float
Sichtglas ohne Schwimmer



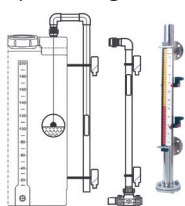
	ⓘ	DESCR.
	R084201	NO
	R084202	NA
	R084203	NB
	-	-

Echelle de visualisation avec flotteur
Sight glass with float
Sichtglas mit Schwimmer



	Ø (mm)
R084301	N0S
R084302	NBS
-	-

Option contacteur magnétique (échelle)
Sight glass magnetic switch option
Option Magnetschalter für Sichtglas



	Ø (mm)
R084401	N0SC
R084402	NR-000
-	-

Indicateur visuel de niveau
Visual level indicator
Optische Niveauanzeiger



	Ø (mm)
R084501	norm. ●
R084502	norm. ●
-	-

Réservoirs à vessie / Pressure tanks / Druckbehälter

Wellmate / Wellmate
Wellmate



	Vol. (l)
R085501	60
R085502	75
R085503	120
...	...
R085511	1000

GWS / GWS
GWS



	Vol. (l)
R085601	100
R085602	200
R085603	300
R085604	350
R085605	450

Aquasystem / Aquasystem
Aquasystem



	Vol. (l)
R085701	50
R085702	80
R085703	100
...	...
R085710	2000

Manomètres, Jauges de pression, Pressostats & Capteurs de pression / Manometers, Pressure gauges, Pressure switches & sensors / Manometer, Druckschalter & Drucksensoren

Alliage cuivre, sec / Copper alloy, dry
Kupferlegierung, trocken



	P (bar)
R086101	0,6
R086102	1,0
R086103	1,6
...	...
R086116	400

Acier inox., glycérine / St. steel, glycerine
Edelstahl, Glycerin



	P (bar)
R086201	0,6
R086202	1,0
R086203	1,6
...	...
R086216	400

Oxygène / Oxygen
Sauerstoff



	P (bar)
R086310	0,6
R086311	1,0

Basse pression / Low pressure
Niederdruck



	P (mbar)
R086401	25
R086402	40
R086403	60
...	...
R086408	600

Différentiel / Differential
Differential



	P (bar)
R086501	0,06
R086502	1,0
R086503	1,6
...	...
R086517	100

Option contacteur / Switch contact option
Option Schalter



	Type / Tipo
R086601	magn. 1
...	...
R086606	magn. 6
R086611	ind. 1
....	...

Séparateur / Separator
Abscheider



	mat.
R086701	PVC
R086702	PP
R086703	PVDF
-	-

Pressostat / Pressure switch
Druckschalter



	P (bar)
R086801	0,35 [1x]
R086802	0,35 [2x]
R086803	1,0 [1x]
...	...
R086822	500 [2x]

Transmetteur / Transmitter
Messumformer



	P (bar)
R086901	0,10
R086902	0,16
R086903	0,25
...	...
R086920	600

Capteur de pression hydrostatique
Well probe hydrostatic sensor
Hidrostatischer Drucksensor



	P (bar)
R083601	0,10
R083602	0,25
R083603	0,40
...	...
R083613	25

Afficheur, stationnaire
Pressure display, stationary
Display, stationär



	P (bar)
R087001	OMNI-P
R087002	GIA2000
-	-

Afficheur, appareil portable
Pressure display, hand-held device
Display, Handmessgerät



	DESCR.
R087101	GMH3111
R087102	GMH3151
R087103	GMH3156
...	...
R087113	GMH3181

**Coupe-tube & Assemblage / Pipe cutter & Assembly /
Rohrschneider & Montage**

Fil / Wire
Schneidfaden



	Ø (mm)
R015611	140 (24")
R015612	500 (72")
-	-

Scie / Saw
Säge



	→ (mm)
R015621	300
R015622	400
-	-

Ciseaux / Shear
Blechscher



	Ø (mm)
R015631	26
R015632	40
R015633	63
-	-

Molette / Cutter
Rohrschneider



	Ø (mm)
R015600	3 ... 33
R015601	6 ... 63
R015604	10 ... 90
...	...
R015606	150 ... 254

Guillotine / Guillotine
Schneidemaschine



	Ø (mm)
R015641	125
R015642	225
R015643	350
-	-

Segment / Segment
Segment



	Ø (mm)
R015661	160 ... 315
R015662	355 ... 500
R015663	355 ... 630
R015664	355 ... 800
-	-

Clé à sangle / Strap wrench
Spannband



	Ø (mm)
R015711	10 ... 63
R015712	33 ... 127
R015713	60 ... 324
-	-

Cône à chanfreiner / Deburring cone
Abschrägfräse



	Ø (mm)
R015721	20 ... 40
R015722	20 ... 63
-	-

Chanfreineuse / Beveler
Abschrägmaschine



	Ø (mm)
R015731	50 ... 200
R015732	40 ... 300
-	-

Ebarbeur - Ebavureur / Deburring tool
Putzer



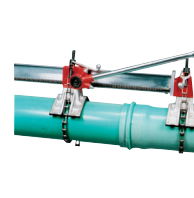
	DESCR.
R015741	4x
-	-

Etau / Vise
Presse



	Ø (mm)
R015751	10 ... 75
R015752	10 ... 114
R015753	10 ... 141
...	...
R015757	50 ... 500

Assembleur / Joiner
Klebmaschine



	Ø (mm)
R015771	114 ... 434
-	-

**Fusion, Soudure, Inspection & Nettoyage / Fusion, Welding, Inspection & Cleaning /
Fusion, Schweißen, Inspektion und Reinigung**

Machine pour l'électrosoudage
Electrofusion controller
Schweissen durch Elektrofusion



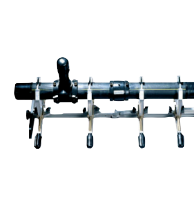
	DESCR.
R015801	Monomatic
R015802	Polymatic
-	-

Racleur
Pipe scraper
Kratzer



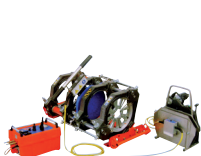
	Ø (mm)
R015811	63
R015821	50 ... 160
R015822	75 ... 315
R015823	355 ... 710
-	-

Positionneur
Pipe aligner and clamping tool
Montagebock



	Ø (mm)
R015801	20 ... 63
R015802	63 ... 160
R015803	32 ... 110
...	...
R015806	250 ... 630

Machine pour le soudage bout à bout
Butt-fusion machine
Stumpfschweißgerät



	Ø (mm)
R015901	63 ... 140
R015902	90 ... 280
-	-

Pistolet extrudeur
Extrusion welder
Strangpresse



	DESCR.
R016001	RSB20
-	-

Nettoyeur de tuyau & Camera
Pipe cleaning machine & Camera
Rohrreinigungsmaschine & Kamera



	DESCR.
R016080	♣
R016090	♣
-	-

Colle / Glue / Kleber

Colle / Glue
Kleber



📖	Vol. (mL)
R014700	100
R014701	250
R014751	500
R014801	1000
R014821	5000

Décapant / Cleaner
Abbeizmittel



📖	Vol. (mL)
R014951	500
R015001	1000
R015021	5000
-	-

Lubrifiant / Lubricant
Schmiere



📖	Υ (g)
R015101	700
-	-

Colle ABS Air-Line / ABS Air-Line adhesive
Kleber ABS Air-Line



📖	Vol. (mL)
R014851	500
-	-

Teflon / Teflon
Teflon



📖	↗ (mm)
R014601	12
R014602	15
R014603	19
-	-

Etanchéité / Sealing
Dichtungsmittel



📖	DESCR.
R014651	577
R014652	5331
-	-

Clips / Clips / Klammern

Type A / Type A
Typ A



📖	Ø (mm)
R015401	16
R015402	20
R015403	25
R015404	32
-	-

Type B / Type B
Typ B



📖	Ø (mm)
R015411	16-19
R015412	20-23
R015413	25-28
...	...
R015419	87-95

Type Cobra / Type Cobra
Typ Cobra



📖	Ø (mm)
R015351	16
R015352	20
R015353	25
...	...
R0153263	160

Type D / Type D
Typ D



📖	Ø (mm)
R015351	90
R015352	110
R015353	125
...	...
R015362	400

Type E / Type E
Typ E



📖	Ø (mm)
R015431	40
R015432	50
R015433	63
...	...
R015439	160

Cale (E & D) / Spacer (E & D)
Zugglied (E & D)



📖	Ø (mm)
R015460	32
...	...
R015463	63
R015481	16
...	...
R015483	160

**Colliers de fixation / Clamping rings /
Rohrschellen**

Collier sans garniture
Single bossed clamp
Rohrschelle ohne Dichtung



📖	Ø (mm)
R411001	13-18
R411002	20-23
R411003	25-28
...	...
R411018	160-169

Collier avec garniture
Damped bossed clamp
Rohrschelle mit Dichtung



📖	Ø (mm)
R411101	15-20
R411102	21-26
R411103	26-32
...	...
R411120	164-169

Goujon
Bolt screw
Schwellenschraube



📖	dim.
R411201	M8 × 50
R411202	M8 × 60
R411203	M8 × 80
...	...
R411215	M12 × 80

Tige filetée / Threaded rod
Gewindestange



📖	dim.
R402801	M8 × 25
R402802	M8 × 30
R402803	M8 × 40
...	...
R402836	M16 × 2000

Collier avec insert / Hose clamp with insert
Rohrschelle mit Gummi



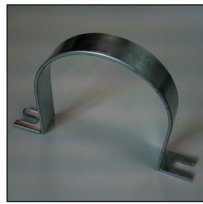
📖	Ø (mm)
R412001	6
R412002	8
R412003	10
...	...
R412012	45

Collier plastique / Plastic clamp
Kunststoffschelle



📖	Ø (mm)
R412101	32
R412102	40
R412103	50
...	...
R412111	160

Etrier acier inox. / Stirrup st. steel
Bügel, Edelstahl



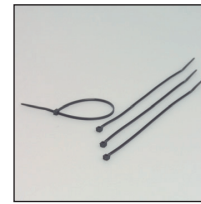
📖	Ø (mm)
R412201	75
R412202	90
R412203	110
...	...
R412209	250

Etrier PVC / Stirrup PVC
Bügel, PVC



📖	Ø (mm)
R412301	32
R412302	40
R412303	50
...	...
R412310	110

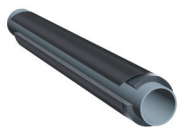
Attache câble / Cable strip
Schaftriemchen



📖	↗ (mm)
R015501	96 x 2,5
R015502	165 x 2,5
R015503	203 x 2,5
...	...
R015521	730 x 12,7

**Isolation thermique / Thermal insulation /
Wärmeisolierung**

K-Flex AL-CLAD / K-Flex AL-CLAD
K-Flex AL-CLAD



📖	↔ x Ø (mm)
R410101	13 x 15
R410102	13 x 18
R410103	13 x 22
...	...
R410140	32 x 160

K-Flex EC / K-Flex EC
K-Flex EC



📖	↔ x Ø (mm)
R410201	9 x 6
R410202	9 x 8
R410203	9 x 10
...	...
R410308	32 x 170

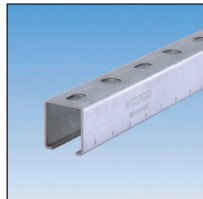
K-Flex STC / K-Flex STC
K-Flex STC



📖	↔ x Ø (mm)
R410401	13 x 42
R410402	13 x 48
R410403	13 x 54
...	...
R410426	19 x 160

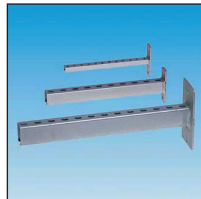
**Rail MPC / MPC rails /
MPC Installationsschienen**

Rail / Support channel
Systemschiene



📖	dim. (mm)
R400101	27/18 (A)
R400102	28/30 (B)
R400103	38/40 (C)
R400104	40/60 (D)
-	-

Console rail / Wall hanger bracket
Schienenkonsole



📖	→ (mm)
R400201	200 (A)
R400202	300 (A)
R400203	160 (B)
...	...
R400210	560 (D)

Jambe de force / Diagonal strut
Stützstrebe



📖	→ (mm)
R400301	440
-	-

Console rail ouverture latérale
Wall hanger bracket lateral slot
Schienenkonsole seitlichem Schienenschlitz



📖	→ (mm)
R400401	600 (A)
R400402	400 (B)
R400403	240 (C)
R400404	480 (C)
-	-

Fixation rapide fileté
Quick fastener external thread
Schnellbefestiger mit Außengewinde



📖	dim. (mm)
R400501	M8 x 7
R400502	M8 x 25
R400503	M8 x 45
...	...
R400511	M10 x 50

Fixation rapide taraudée
Quick fastener internal thread
Schnellbefestiger mit Innengewinde



📖	dim.
R400601	M8 (A/B)
R400602	M10 (A/B)
R400603	M8 (C/D)
R400604	M10 (C/D)

Double écrou / Hammer-head
Hammerkopfbefestiger



📖	dim.
R400701	M8 x 7
R400702	M8 x 15
R400703	M8 x 25
...	...
R400715	M12 x 15

Boulon rail / Hammer-head bolt
Hammerkopfschraube



📖	dim.
R400801	M8 (C/D)
R400802	M10 (C/D)
R400803	M12 (C/D)
-	-

Ecrou rail / Rail nut
Schiebemutter



📖	dim.
R400901	M8 (A/B)
R400902	M8 (C/D)
R400903	M10 (C/D)
R400904	M12 (C/D)
-	-

Plaque de verouillage / Clamp bracket
Halteklammer



📖	dim.
R401001	M8 (A/B)
R401002	M10 (A/B)
R401003	M8 (C)
...	...
R401008	M12 (D)

Capuchon / Protection cap
Abschlusskappe



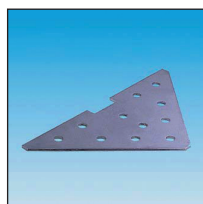
📖	dim.
R401101	A
R401102	B
R401103	C
R4001104	D
-	-

Eclisse / Channel connector
Schienenverbinder



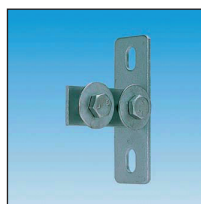
📖	dim.
R401201	A/B
R401202	C/D
-	-

Platine trapézoïdale / Reinforcement angle
Stützwinkel



	dim.
R401301	C
-	-

Té d'assemblage / Channel support bracket
Stirnflansch



	DESCR.
R401401	T (A/B)
R401402	T (C/D)
R401403	L (A/B)
R401404	L (C/D)
-	-

Platine U / Saddle support
Sattelflansch



	DESCR.
R401501	T (A/B)
R401502	T (C/D)
R401503	L (A/B)
R401504	L (C/D)
-	-

Platine U articulée / Vario saddle support
Sattelflansch



	dim.
R401601	C/D
-	-

Console / Mounting angle
Montagewinkel



R401701	45° (A/B)
R401702	90° (A/B)
R401703	45° (C/D)
R401704	90° (C/D)
-	-

Oméga / Cross channel connector
Schienenbügel



	dim.
R401801	B
R401802	C
R401803	D
-	-

Feragrip / Girder cleat
Trägerkralle



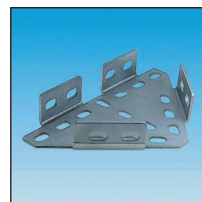
	dim.
R401901	M6 (A/B)
R401902	M10 (C/D)
-	-

Equerre consolidation / Cantilever bracket
Konsolenwinkel



	dim. (mm)
R402001	200 × 4
-	-

Equerre universelle / Construction bracket
Konstruktionswinkel



	dim. (mm)
R402101	280 × 164
-	-

Equerre courte / Short mounting angle
Montagewinkel, kurz



	dim.
R402201	C/D
-	-

Equerre plate / Connection plate
Verbindungsplatte



	DESCR.
R402301	L (C/D)
R402302	T (C/D)
-	-

Equerre d'angle / Lateral angle
Seitenwinkel



	DESCR.
R402401	↗ (C/D)
R402402	↖ (C/D)
R402403	↗↖ (C/D)
-	-

Charnière / Hinge
Gelenk



	DESCR.
R402501	Vario
-	-

Amortisseur / Resilient pad
Puffer



	Ø (mm)
R402601	43 (M8-M10)
-	-

Rondelle / Washer
Scheibe



	Ø
R402701	M8/30
R402702	M10/35
-	-

Tige filetée / Threaded rod
Gewindestange



	dim.
R402801	M8 × 25
R402802	M8 × 30
R402803	M8 × 40
...	...
R402836	M16 × 2000

Manchon raccordement / Round connector
Gewindemuffe



	dim.
R402901	M8 × 30
R402902	M8 × 40
R402903	M10 × 30
...	...
R402906	M16 × 40

Visserie / Screw set
Schraube



	dim.
R403001	M8 × 20
R403002	M8 × 25
R403003	M8 × 30
...	...
R403027	M24 × 60

**Connecteurs 3D / 3D connectors /
3D Kuppungen**

Coude / Elbow
Winkel



	dim. (mm)
R017803	30 × 30 × 2
<i>std. : galv.</i>	
<i>opt. : AISI304</i>	
<i>opt. : M8/M10</i>	

Coude avec renvoi / Elbow with discharge
Winkel mit Abgang



	dim. (mm)
R017804	30 × 30 × 2
<i>std. : galv.</i>	
<i>opt. : AISI304</i>	
<i>opt. : M8/M10</i>	

Té / T-piece
T-Stück



	dim. (mm)
R017805	30 × 30 × 2
<i>std. : galv.</i>	
<i>opt. : AISI304</i>	
<i>opt. : M8/M10</i>	

Té avec renvoi / T-piece with discharge
T-Stück mit Abgang



	dim. (mm)
R017806	30 × 30 × 2
<i>std. : galv.</i>	
<i>opt. : AISI304</i>	
<i>opt. : M8/M10</i>	

Croix / Cross
Kreuz



	dim. (mm)
R017807	30 × 30 × 2
<i>std. : galv.</i>	
<i>opt. : AISI304</i>	
<i>opt. : M8/M10</i>	

Croix avec renvoi / Cross with discharge
Kreuz mit Abgang



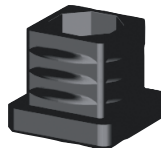
	dim. (mm)
R017808	30 × 30 × 2
<i>std. : galv.</i>	
<i>opt. : AISI304</i>	
<i>opt. : M8/M10</i>	

Etoile / Star
Stern



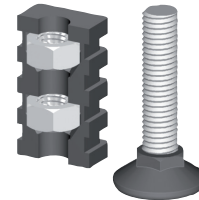
	dim. (mm)
R017809	30 × 30 × 2
<i>std. : galv.</i>	
<i>opt. : AISI304</i>	
<i>opt. : M8/M10</i>	

Embout / Plug
Endstopfen



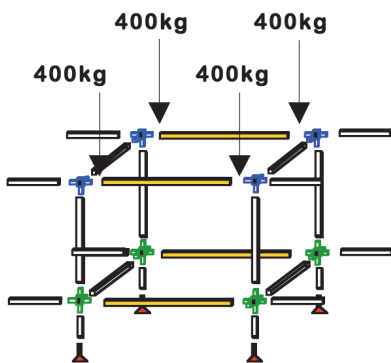
	dim. (mm)
R017810	30 × 30 × 2
<i>std. : galv.</i>	
<i>opt. : AISI304</i>	
<i>opt. : M8/M10</i>	

Pied / Leg
Stellfuß



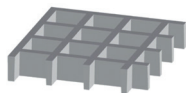
	dim. (mm)
R017811	30 × 30 × 2
<i>std. : galv.</i>	
<i>opt. : AISI304</i>	
<i>opt. : M8/M10</i>	

R017801 : tube carré aluminium 30 × 30 × 2 mm / Square aluminium pipe 30 × 30 × 2 mm / Aluminium-Quadratrohr 30 × 30 × 2 mm



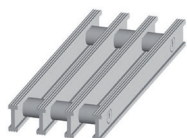
**Caillebotis & Surfaces antidérapantes / Walkways & Anti-slip surfaces /
Bodengitter & rutschfeste Flächen**

Caillebotis moulé / Moulded grating
Standardgitter



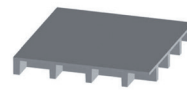
	↑ × (mm)
R404001	15 × 42
R404002	25 × 30
R404003	25 × 13
...	...
R404014	60 × 26

Caillebotis pultrudé / Profile grating
Profilgitter



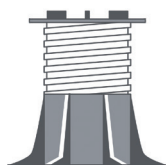
	↑ × (mm)
R404101	30 × 14
R404102	30 × 20
R404103	30 × 30
...	...
R404106	60 × 30

Sol sécurité / Safety flooring
Sicherheitsböden



	↑ × (mm)
R404201	18 × 30
R404202	28 × 30
R404203	33 × 30
R404204	41 × 30
R404205	53 × 42

Pieds plastique / Plastic feet
Kunststofffüsse



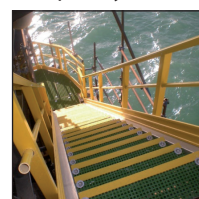
	↑ (mm)
R404301	32-50
R404302	50-75
R404303	75-120
...	...
R40408	300-400

Sets de fixation / Fixing sets
Halterungssets



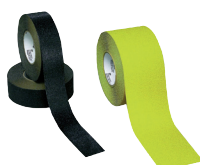
	DESCR.
R404401	TL
R404402	KU
R404403	DK
R404404	MK
-	-

Systèmes complets / Complete systems
Komplettsysteme



	DESCR.
R404501	ⓘ
-	-

3M Safety-Walk B2
(Universal)



	→ (mm)
R404601	25 ●
R404602	50 ●●
R404604	100 ●●
...	...
R404609	914 ●

3M Safety-Walk Coarse
(Extra)



	→ (mm)
R404701	150 ●
R404702	610 ●
R404703	914 ●
-	-

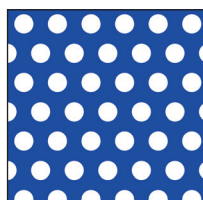
3M Safety-Walk Comfortable
(Flexible)



	→ (mm)
R404801	50 ●
R404802	100 ●
R404803	150 ●
-	-

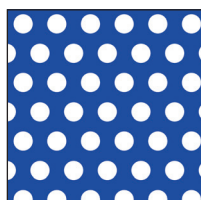
**Tôles perforées / Perforated sheets /
Lochplatten**

Alu., trous ronds / Alu., round holes
Alu., runde Löcher



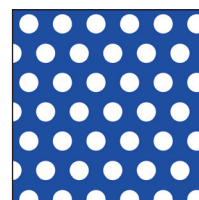
	■ (mm)
R018099	RT 0,6 - 1,25
R018100	RT 1,0 - 2,0
R018101	RT 1,5 - 2,5
...	...
R018145	RT 30 - 40

AISI 304, trous ronds / AISI 304, round holes
AISI 304, runde Löcher



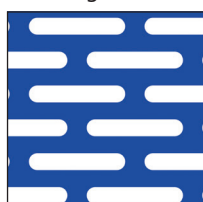
	■ (mm)
R018001	RT 0,6 - 1,25
R018002	RT 0,75 - 1,5
R018003	RT 1,0 - 2,0
...	...
R018077	RT 20 - 30

AISI 316, trous ronds / AISI 316, round holes
AISI 316, runde Löcher



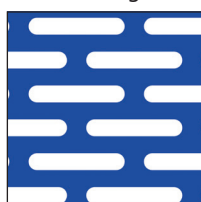
	■ (mm)
R018151	RT 1,25 - 2,5
R018152	RT 2,0 - 3,0
R018163	RT 2,0 - 3,5
...	...
R018173	RT 10 - 15

Alu., trous oblongs / Alu., slotted holes
Alu., längliche Löcher



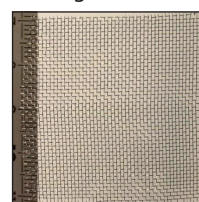
	■ (mm)
R018301	2 × 20
R018302	3 × 20
R018303	5 × 20
R018304	5 × 25
-	-

AISI 304, tr. oblongs / AISI 304, slotted holes
AISI 304, längliche Löcher



	■ (mm)
R018201	5 × 20
-	-

Toile métallique / Wire cloth
Metallgewebe



☞ p. 100 (M110000)
grilles spéciales /
special grids /
Spezielle Gitter:
☞ p. 84

**Joint caoutchouc / Rubber seal /
Moosgummi**

rectangulaire / square
rechteckig



	→ × ↑ (mm)
R018401	2 × 10
R018402	2 × 20
R018403	3 × 10
...	...
R018411	10 × 50

rectangulaire, adhésif / square, adhesive
rechteckig, Selbstklebeband



	→ × ↑ (mm)
R018503	2 × 10
R018504	2 × 20
R018507	3 × 10
...	...
R018511	10 × 50

rond / round
rund



	Ø (mm)
R018701	2
R018702	3
R018703	4
...	...
R018713	50

Prise à protection thermique & Câble électrique / Motor protection plug & Electric cable /
Motorschutzstecker & Elektrokabel

VSL / VSL
VSL



📖	Ø (mm ²)
R405501	2× 0,75
-	-

PUR / PUR
PUR



📖	Ø (mm ²)
R405601	2× 0,75
R405602	2× 1,0
R405603	3× 1,0
R405604	2× 1,5
R405605	3× 1,5

NYM / NYM
NYM



📖	Ø (mm ²)
R405701	3× 1,5
R405702	5× 1,5
R405703	3× 2,5
R405704	5× 2,5
-	-

H05RR-F / H05RR-F
H05RR-F



📖	Ø (mm ²)
R405801	2× 1,0
R405802	3× 1,0
R405803	2× 1,5
...	...
R405807	5× 2,5

H07RN-F / H07RN-F
H07RN-F



📖	Vol. (l)
E009198	2× 1,0
E009199	3× 1,0
E009200	2× 1,5
...	...
E009501	5× 2,5

Connecteur IP65 / Connector IP65
Konnektor IP65



📖	Ø (mm)
D014610	3 ... 10
-	-

Prises Schuko
Schuko plugs
Schuckostecker



📖	DESCR.
R406001	♂
R406002	♀
-	-

Prises CEE
CEE plugs
CEE Stecker



📖	Ø (mm)
R406101	♂
R406102	♀
-	-

Prise protection thermique 230 V
Motor protection plug 230 V
Motorschutzstecker 230 V



📖	I (A)
E007600	1,0
E007700	1,5
E007701	2,0
...	...
E007710	16,0

Prise protection thermique 400 V
Motor protection plug 400 V
Motorschutzstecker 400 V



📖	I (A)
E007800	0,6 - 1,0
E007900	1,0 - 1,6
E008000	1,6 - 2,5
...	...
E008400	10,0 - 16,0

Prise protection thermique 400 V, inv. phase
Motor protection plug 400 V, phase check
Motorschutzstecker 400V, Phasenwender



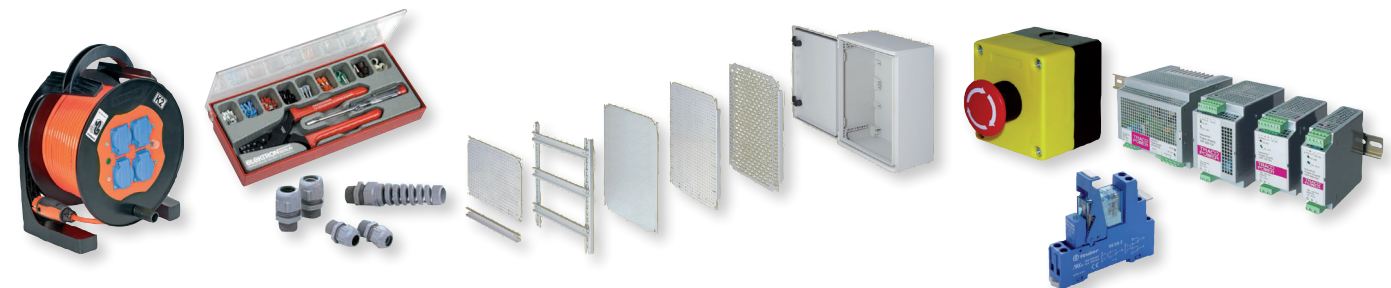
📖	I (A)
E008500	0,6 - 1,0
E008600	1,0 - 1,6
E008700	1,6 - 2,5
...	...
E009100	10,0 - 16,0

Disjoncteur 400 V, sans prise
Motor protection plug 400 V, w/o connector
Motorschutz 400 V, ohne Stecker



📖	I (A)
E009130	0,6 - 1,0
E009140	1,0 - 1,6
E009150	1,6 - 2,5
...	...
E009190	10,0 - 16,0

autres équipements électriques disponibles sur demande / other electric equipment available on request /
andere elektrische Geräte erhältlich auf Anfrage :



hydraulique, électricité & outillage sur demande / hydraulics, electrics and tools on request / Hydraulik, Elektrik und Werkzeug auf Anfrage :

ACE

airtec

AVENTICS

BOSCH
powered for life

CEJN

CE

Continental
Gates

EMERSON

FAG

FESTO

fischer
METALWORKSYSTEM

GARDENA

GEDORE

Henkel

HYDAC

IDEAL

KNIPEX

LOCTITE

NORGREN

NORMA

OKS

Parker

>Power Team

Rexroth
Bosch Group

SKF

SMC

tesa

WIKAI